

Cargo Transport Multi Carrying Vessel (MCV) with Ramp

123M – Project Cargo- RoRo Multi Carrying Vessel



Vessel Specifications

Highly maneuverable, with azimuth thrusters
smart ballasting, shallow draft,
fuel efficient deck carrier

Vessel Specifications

Topaz Tobo/ Topaz Volga or Sister vessel

Minor changes may be present between sister vessels

Vessel Particulars

Year built/builder	2017/2018, Vard group, AS Norway
Flag	Marshall Islands (current)
Class	ABS

Capacities

Deck cargo capacity 2500 - 3000 t Depending on VCG

Deck Strength Avg. 20 MT/m², Points loads on frames up to 280 MT

Deck area (total) 1300 m² Approx.

Square deck area RoRo 88.5 m x 16.5 m

RoRo jetty reach height min/max 0.8 m/ 3.5 m (trim condition, max depends on cargo weight)

Fuel oil/Fresh water 272 m³/242 m³

Ballast water 4694 m³

Performance

Max speed 10 knots

Service speed 9 knots

Economic speed 8 knots

Maneuverability Turns on own axis

Accommodation & Facilities

Total persons 18 POB
(in accordance with MCL requirements)

Dimensions

Length overall 123 m

Breadth (Extreme) 16.5 m

Min/Max draft 2.2 m (in ballast condition)

Max scantling draft 3.4 m

Air draft 14 m at SLL

Depth moulded 5.6 m

Deadweight 4000t approx.

Lightship 2830 t approx.

Hull type Double bottom

Machinery

Main propulsion Diesel-electric.
2 x 1200 kW Schottel ASD

Generators 3 x 994 kW Cat C32

Bow thruster 2 x 500 kW Schottel tunnel thruster

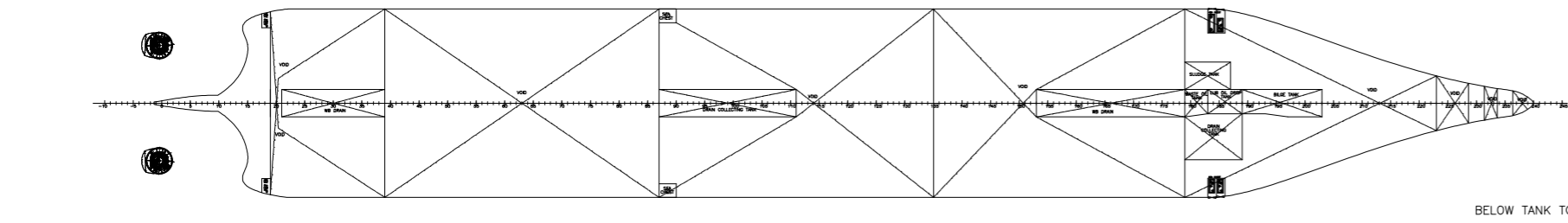
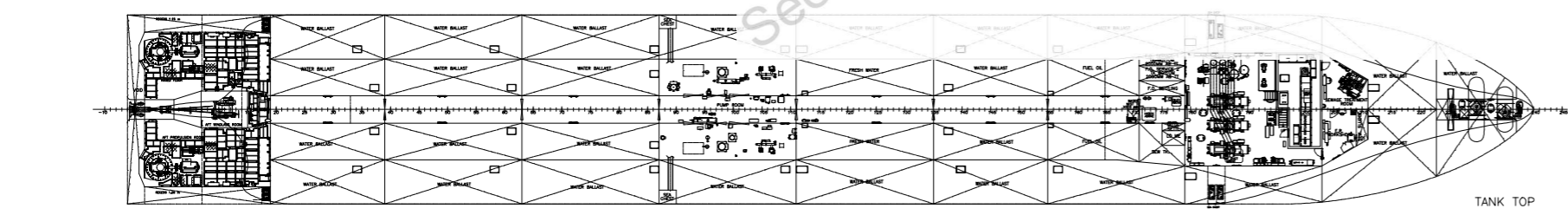
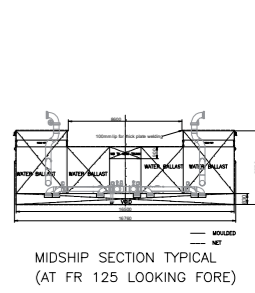
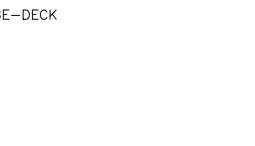
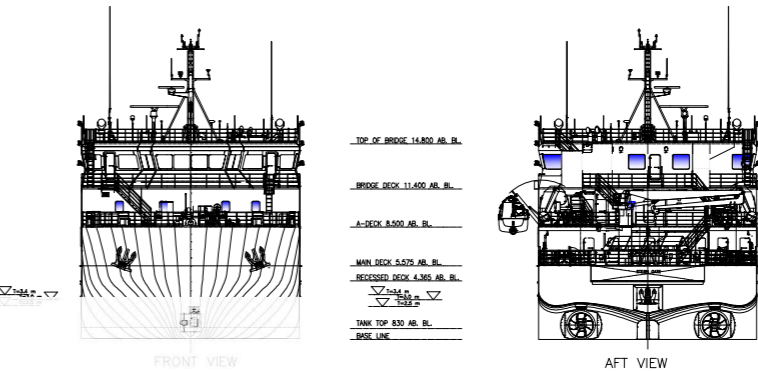
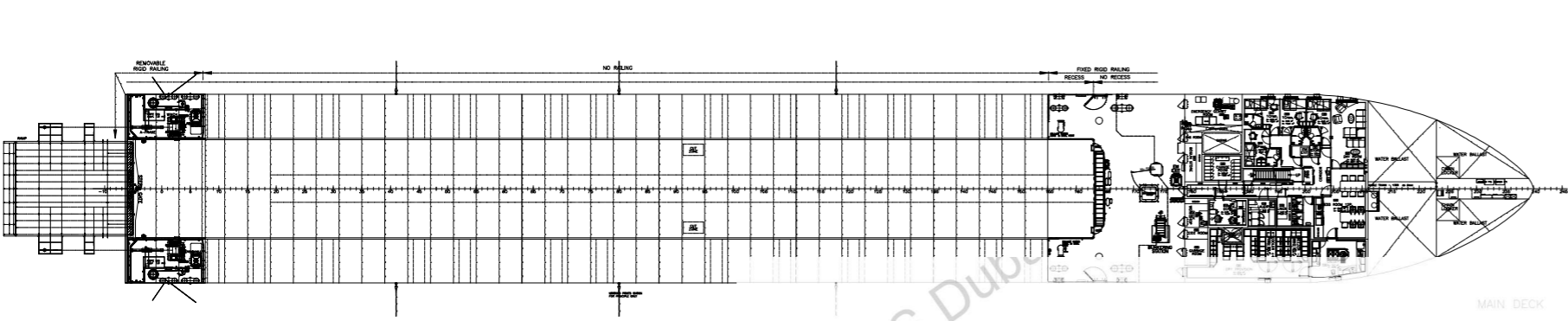
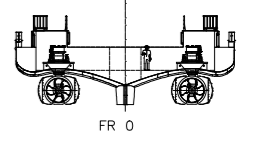
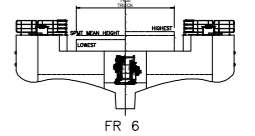
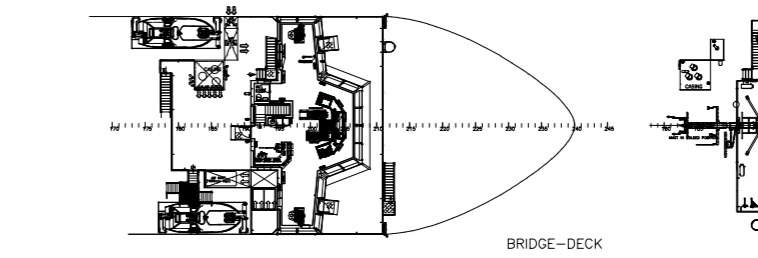
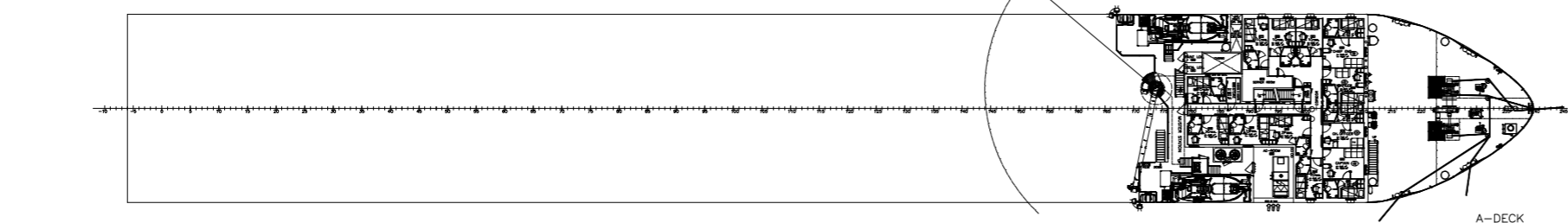
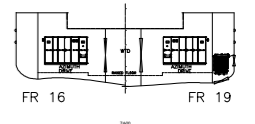
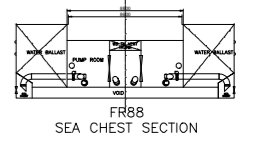
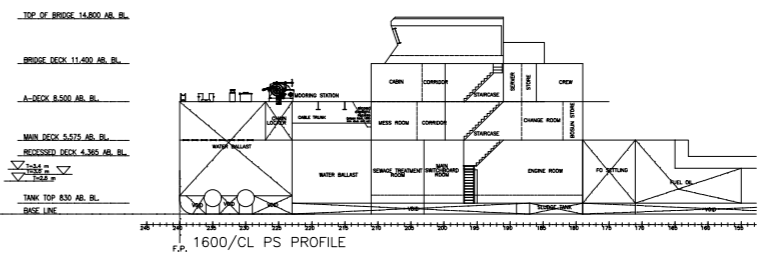
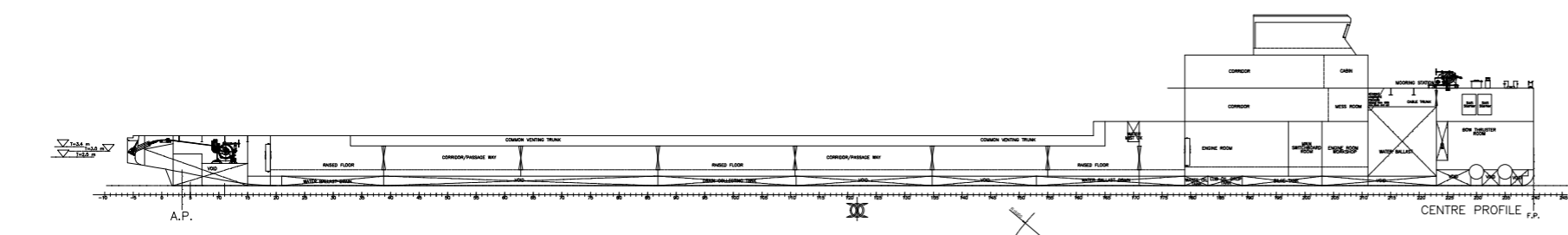
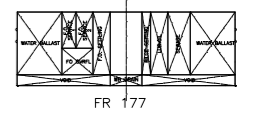
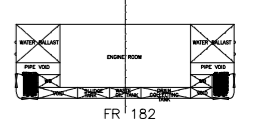
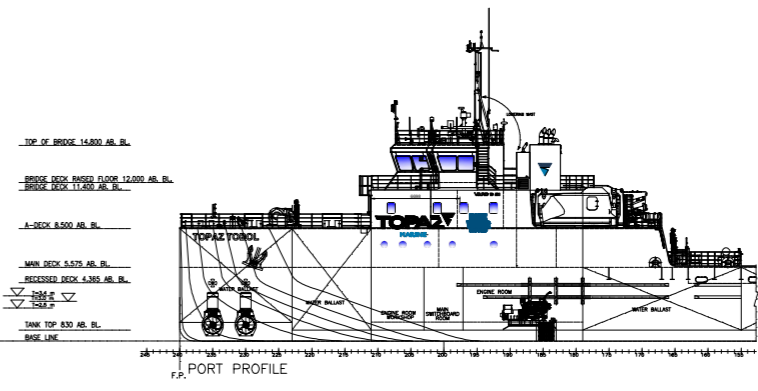
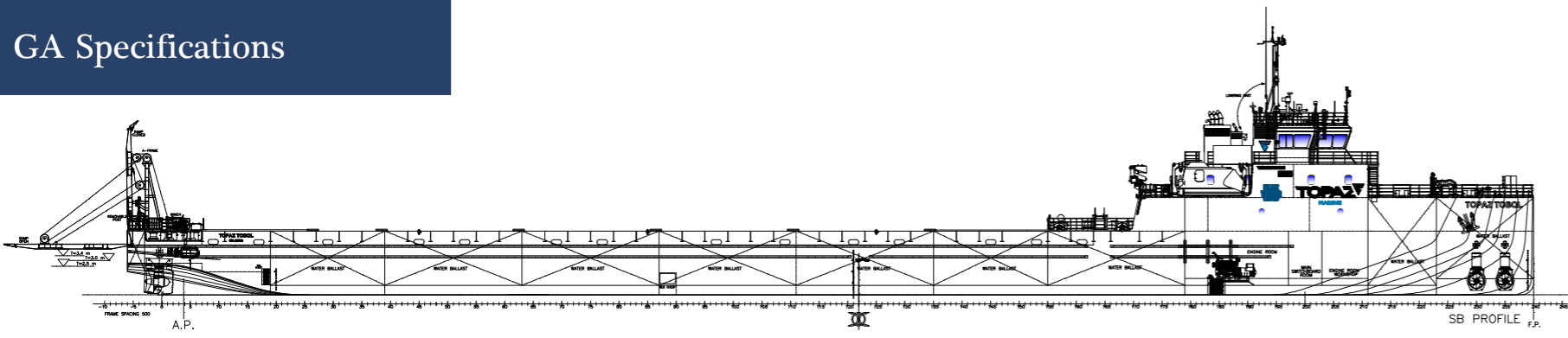
Ballast pumps 2 x 1000 m³/hr, 1 x 500 m³/hr

Provision crane 1,000 kg@15 m radius

Anchors 2 x 2.3 T (fwd), 1 x 1.9 T (aft)

Ramp 10 metre Ramp (Capacity 100 T SWL)

GA Specifications



REVIEWED
Details of this review are as indicated in the ABS letter

REVIEWED
on behalf of the government of the vessel's registry as indicated in ABS letter

ABS

ABS

WITH ABS AMENDMENTS ON PAGES See Remarks on this page

WITH ABS FINDINGS #S N/A

VAR 9 21

MAIN PARTICULARS APPROX.

L.O.A.	123.0 m
L.P.P.	118.0 m
BREADTH MLD.	18.5 m
BREADTH NET (INCL FENDERS)	16.7 m
DEPTH MAIN DK.	5.6 m
DEPTH TO RECESS DECK	4.4 m
MAX. DRAUGHT MOULDED	3.0 m
DRAUGHT NET @ 1800 t (sea water)	2.8 m
DRAUGHT NET @ 1800 t (river water)	2.9 m
BALLAST WATER	4 400 m ³
FRESH WATER	250 m ³
FUEL OIL	270 m ³
ACCOMMODATION	18 persons
SINGLE CABINS	14 persons
DOUBLE CABINS	4 persons

REV.	DATE	TEXT	DO	GR	SF
-	12.08.24	AFT RAMP, A-FRAME & WINCH ADDED			
-	24.08.17	AS BUILT FOR V859 REFERRED TO 860-101-001-F			
REV.	DATE	TEXT	DO	GR	SF
REV.	DATE	TEXT	DO	GR	SF
REV.	DATE	TEXT	DO	GR	SF
REV.	DATE	TEXT	DO	GR	SF
REV.	DATE	TEXT	DO	GR	SF

REV. APPROVED BY APPROVAL DATE

REL: 859-101-001

SHEET: 1 of 1

DATE: 24.08.17

DATE: 24.08.17

DATE: 24.08.17

DATE: 24.08.17

SCALE: 1:200

NO: 859-101-001

REV.:

CLASS ID: 51287325

IMO NUMBER: 9412244

CLASS: ABS

A1, Restricted Service, AMS, ACCU

VAR 9 21
GENERAL ARRANGEMENT

FORM: A0

NO: 1812

REV: VARD 9 21

VAR 9 21
GENERAL ARRANGEMENT

FORM: A0

NO: 1812

REV: VARD 9 21

See ABS Dub...

Commercial Department P&O Maritime Logistics

Jafza 17, 3rd Floor, Jebel Ali Free Zone, P.O. Box 17000, Dubai, UAE

+971 4 440 47 00 commercial@pomaritime.com

<https://www.linkedin.com/company/478701/admin/> <https://www.facebook.com/POMaritime>



All the detail are believed to be correct but not guaranteed and owners reserve the right to amend them.