

Cargo Transport Multi Carrying Vessel (MCV)

123M – Project Cargo- RoRo Multi Carrying Vessel



Vessel Specifications

Highly maneuverable,
smart ballasting, shallow draft,
fuel efficient deck carrier

Vessel Specifications

RUZA, TOBOL, KAMA, MOSKVA, DON, URAL

Minor changes may be present between sister vessels

Vessel Particulars

Year built/builder	2017/2018, Vard group, AS Norway
Flag	Marshall Islands (current)
Class	ABS

Capacities

Deck cargo capacity	2000 – 3000 MT Depending on VCG
Deck Strength	Overall 10 MT/m ² , Points loads on frames up to 280 MT
Deck area (total)	1300 m ² Approx.
Side decks (port and starboard)	73.8 m x 3.5 m each
Square deck area RoRo	84 m x 8.6 m x 1.2 m
RoRo jetty reach height min/max	0.8 m/ 3.5 m (trim condition, max depends on cargo weight)
Fuel oil/Fresh water	272 m ³ /242 m ³
Ballast water	4694 m ³

Performance

Max speed	12 knots
Service speed	10 knots
Economic speed	9 knots w.
Maneuverability	Turns on own axis

Accommodation & Facilities

Total persons	18 (can be readily upgraded to 28 in accordance with MCL requirements)
----------------------	--

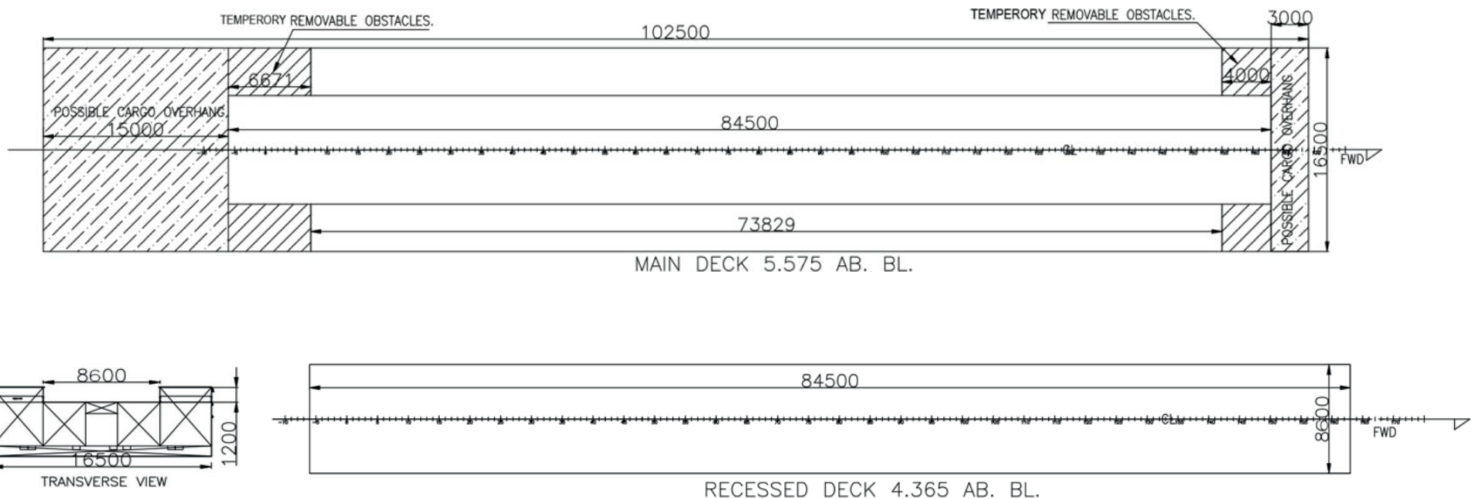
Dimensions

Length overall	123 m
Breadth (Moulded)	16.5 m
Min/Max draft	2.2 m (in ballast condition) / 3 m at
Max scantling draft	3.4 m (in port & bridge passing only)
Air draft	14 m at SLL
Depth moulded	5.6 m
Deadweight	2958 t
Lightship	2330 t
Registered tonnage	GT: 3183 / NT: 955
Hull type	Double bottom

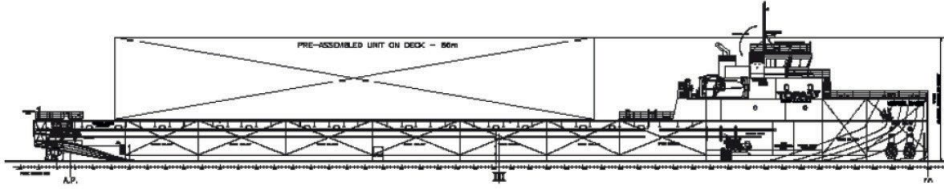
Machinery and Deck Equipment

Main propulsion	Diesel-electric. 2 x 1200 kW Schottel ASD
Generators	3 x 994 kW Cat C32
Bow thruster	2 x 500 kW Schottel tunnel thruster
Ballast pumps	2 x 1000 m ³ /hr, 1 x 500 m ³ /hr
Provision crane	1,000 kg@15 m radius
Anchors	2 x 2.3 T (fwd), 1 x 1.9 T (aft)
Anchor chain	Dia 40 mm

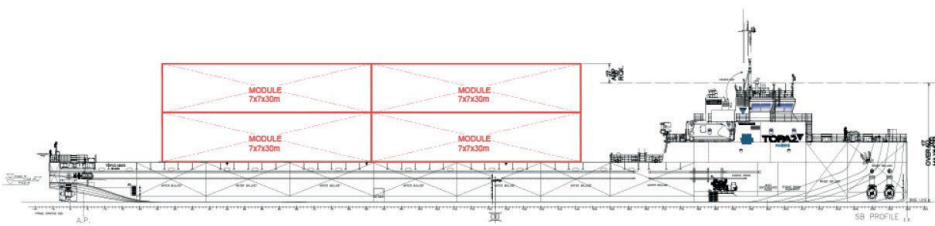
Last revision December 2022



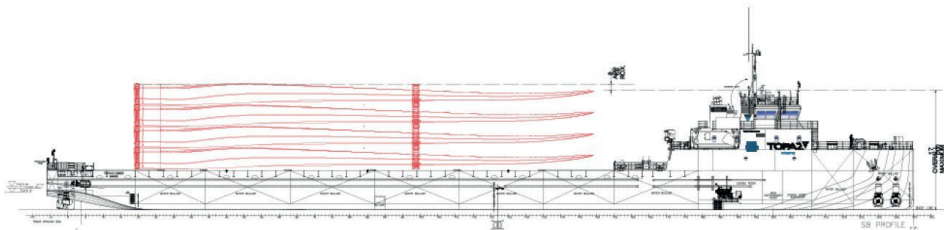
GA Specifications



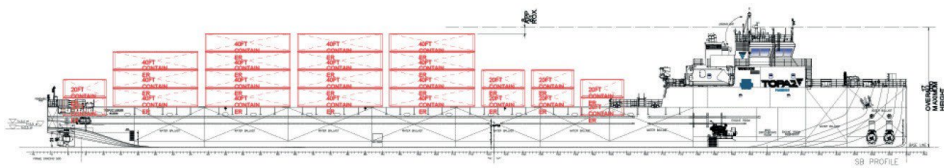
SB profile



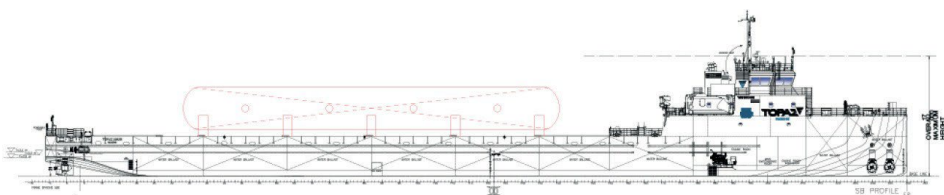
MULTI CARGO PAU



**WIND TURBINE
BLADE CARGO**



**40 ft AND 20 ft
CONTAINER CARGO**



PROJECT CARGO

Contact

Commercial Department P&O Maritime Logistics

Jafza 17, 3rd Floor, Jebel Ali Free Zone, P.O. Box 17000, Dubai, UAE

+971 4 440 47 00 commercial@pomaritime.com

<https://www.linkedin.com/company/478701/admin/> <https://www.facebook.com/POMaritime>



All the detail are believed to be correct but not guaranteed and owners reserve the right to amend them.