

# Cargo Transport Flat Deck Multi Carrying Vessel (MCV)

123M – Project Cargo- RoRo Multi Carrying Vessel



## Vessel Specifications

Highly maneuverable, with azimuth thrusters  
smart ballasting, shallow draft,  
fuel efficient deck carrier

# Vessel Specifications

Vessel Name: Topaz Ruza

## Vessel Particulars

Year built/builder	2018, Vard group, AS Norway
Flag	Marshall Islands
Class	ABS

## Capacities

Deck cargo capacity	2000-2300 t Depending on VCG
Deck Strength	Avg. 15 MT/m <sup>2</sup> , Points loads on frames up to 280 MT

Deck area (total) 1345 m<sup>2</sup> Approx.

Square deck area RoRo 80.5 m x 16.5 m & 8.6 m x 4.0 m

RoRo jetty reach height min/max 0.8 m/ 5.0 m (trim condition, max depends on cargo weight, VCG, Tide details )

Fuel oil/Fresh water 272 m<sup>3</sup>/242 m<sup>3</sup>

Ballast water 4694 m<sup>3</sup>

## Performance

Max speed	10 knots
Service speed	9 knots
Economic speed	8 knots
Maneuverability	Turns on own axis

## Accommodation & Facilities

Total persons 11 POB  
(in accordance with MCL requirements)

## Dimensions

Length overall	123 m
Breadth (Incl. wings)	20.5 m
Min. draft	2.5 m (in Ballast condition)
Max scantling draft	3.4 m
Air draft	14 m at SLL
Depth moulded	5.6 m
Deadweight	3364t approx.
Lightship	2700 t.
Hull type	Double bottom

## Machinery

Main propulsion Diesel-electric.  
2 x 1200 kW Schottel ASD

Generators 3 x 994 kW Cat C32

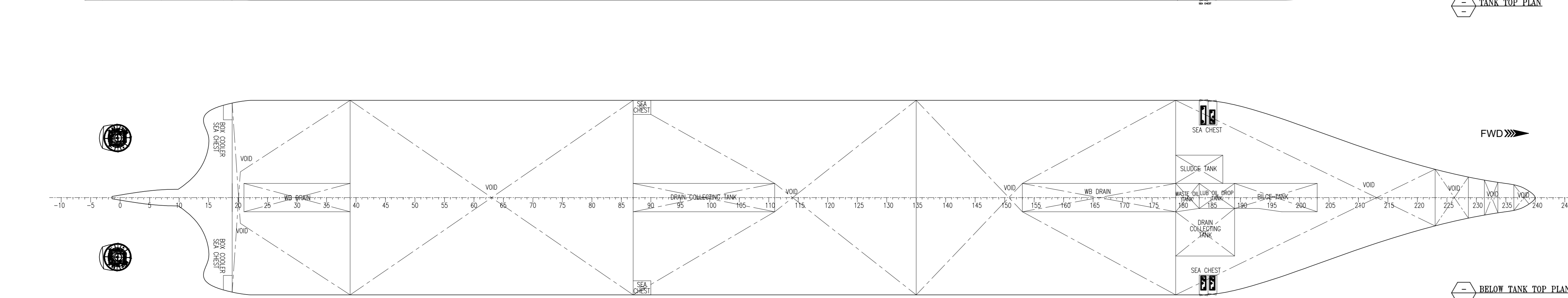
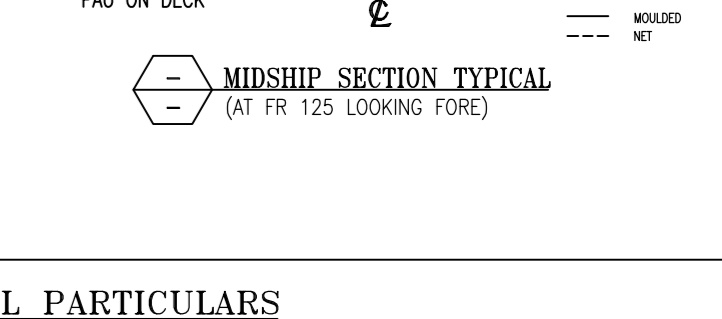
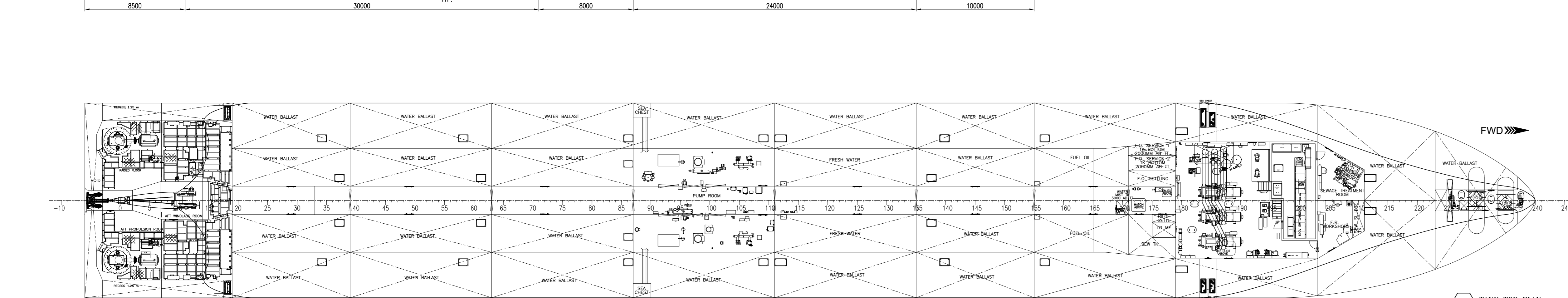
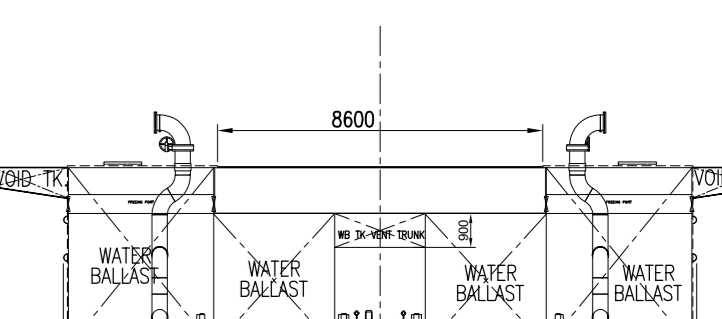
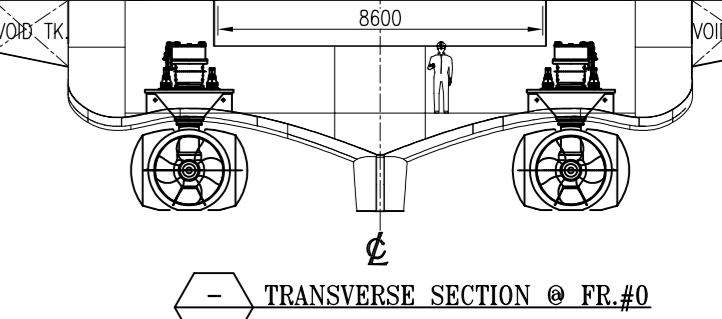
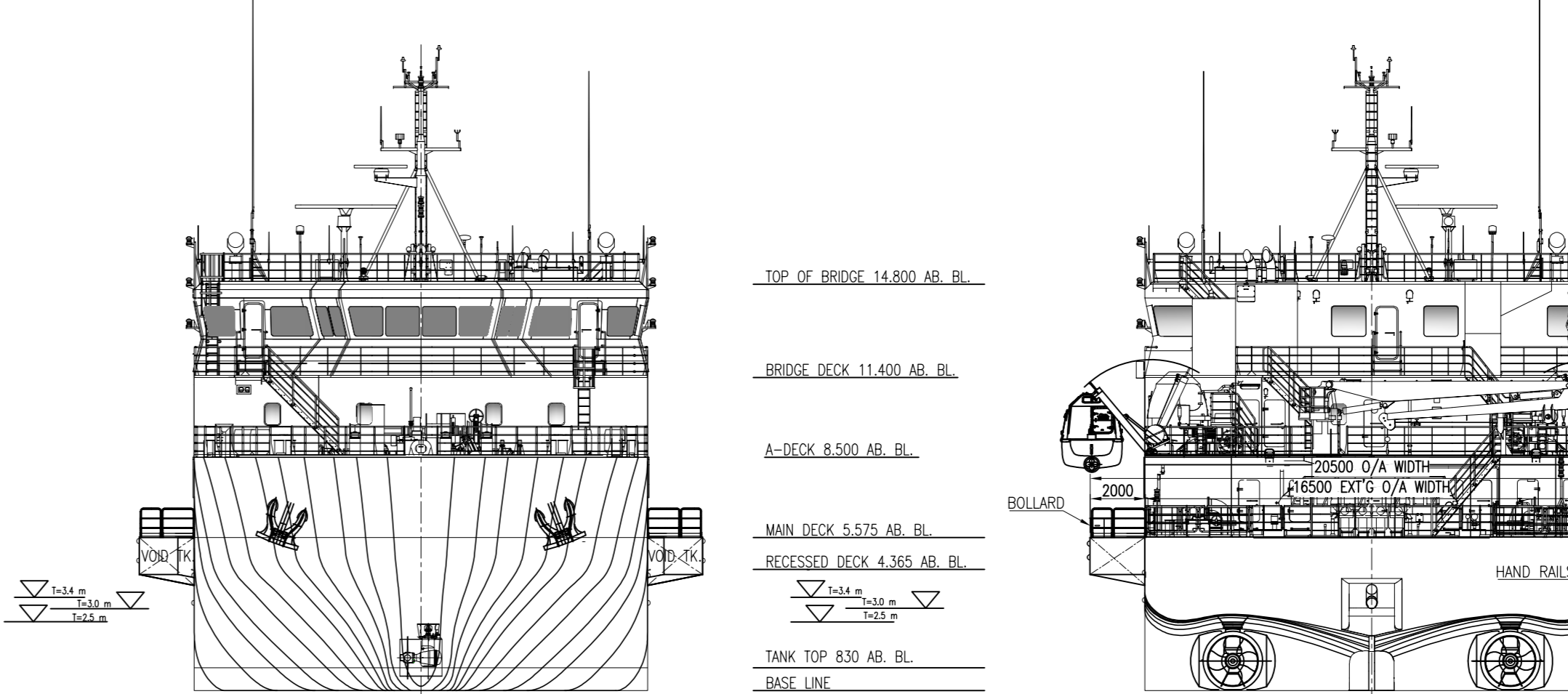
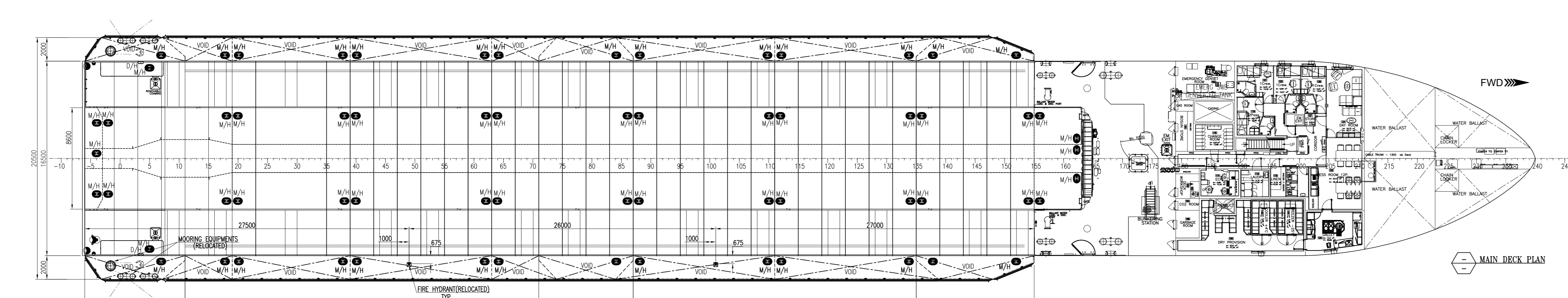
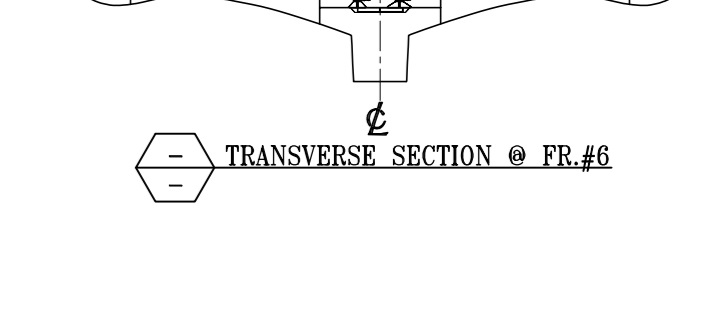
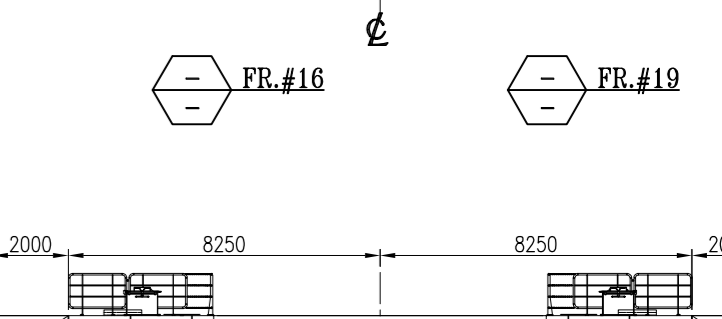
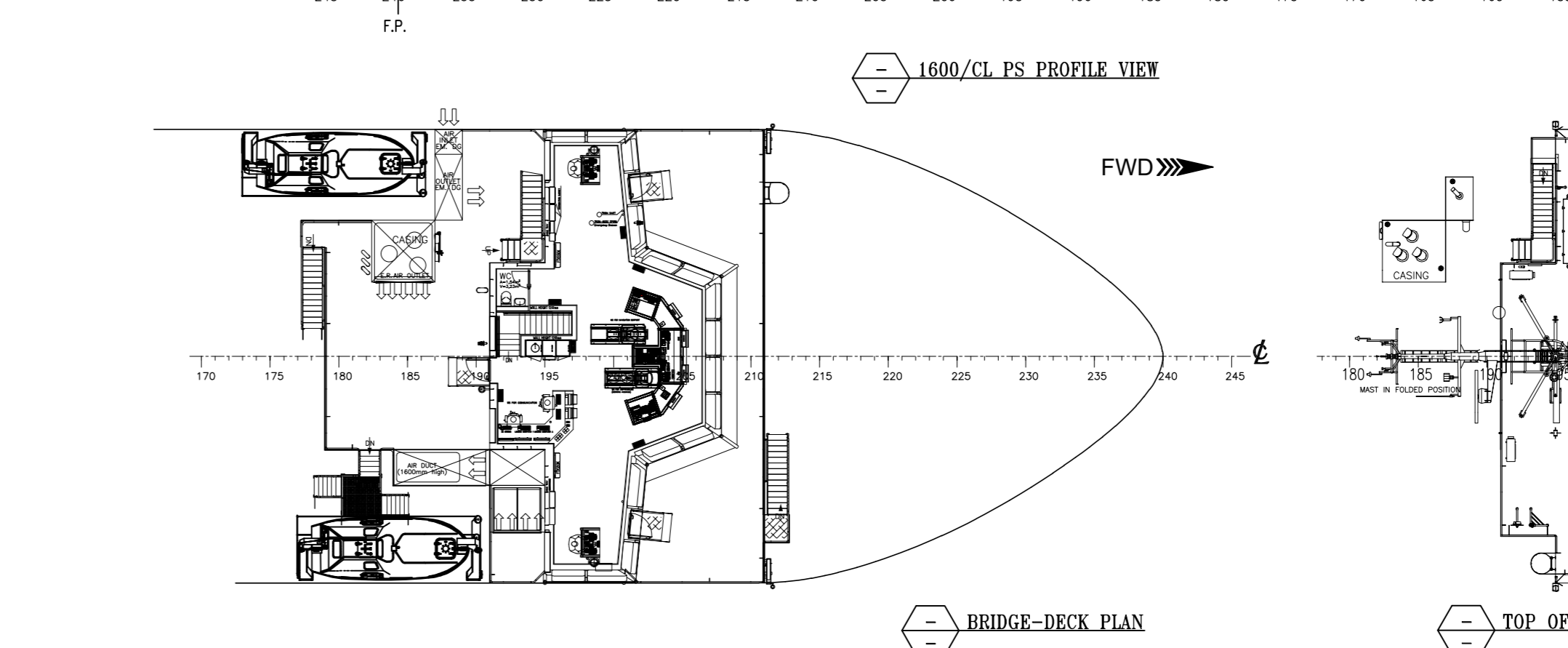
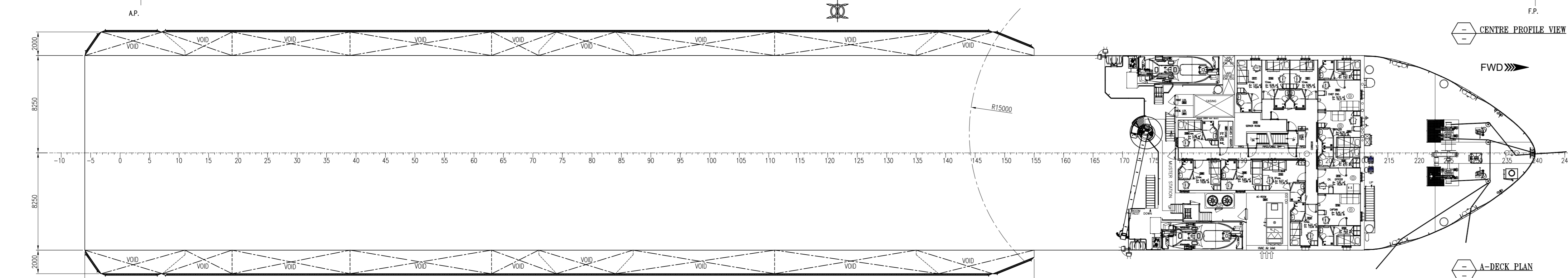
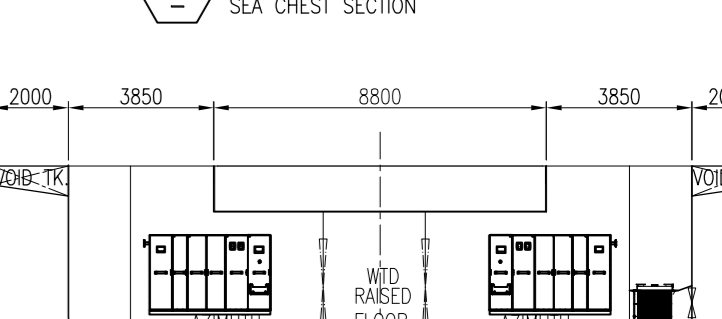
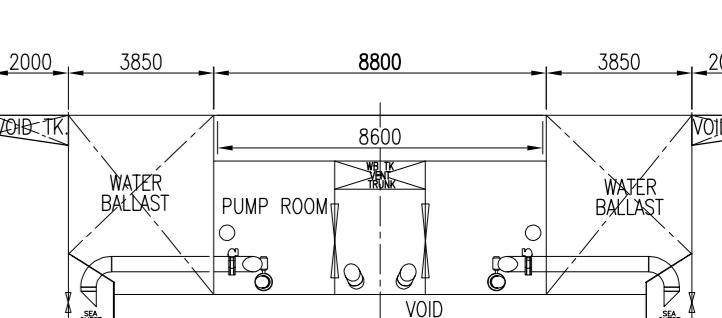
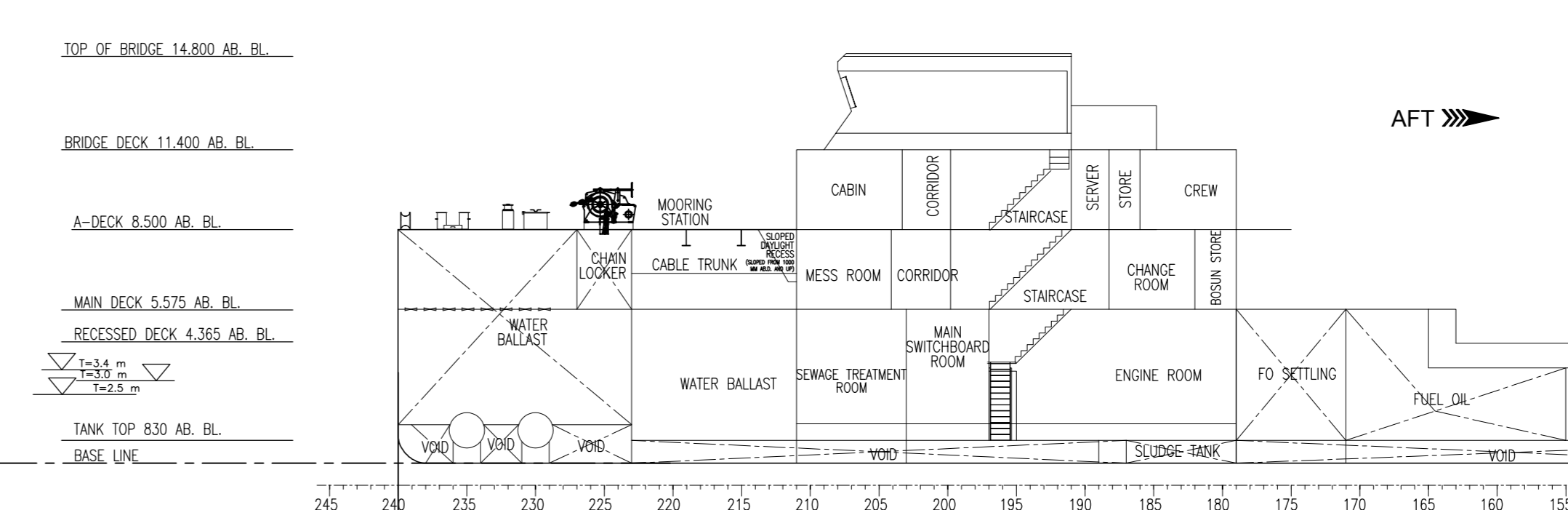
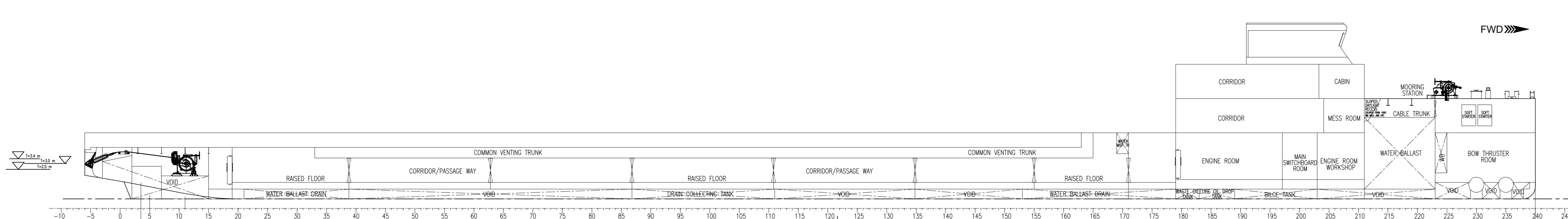
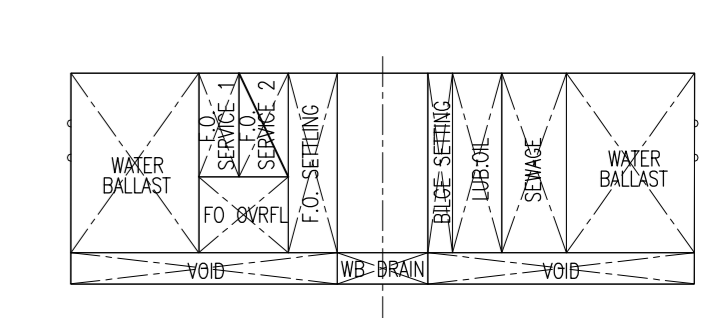
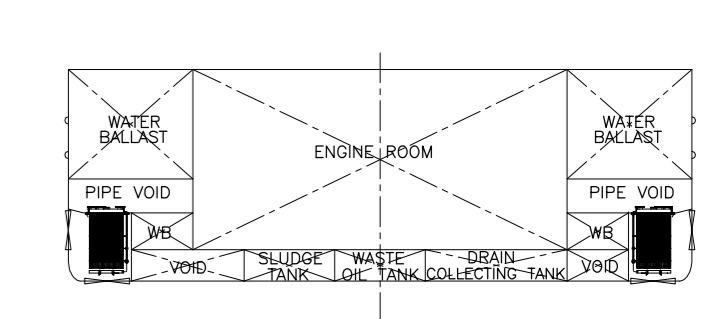
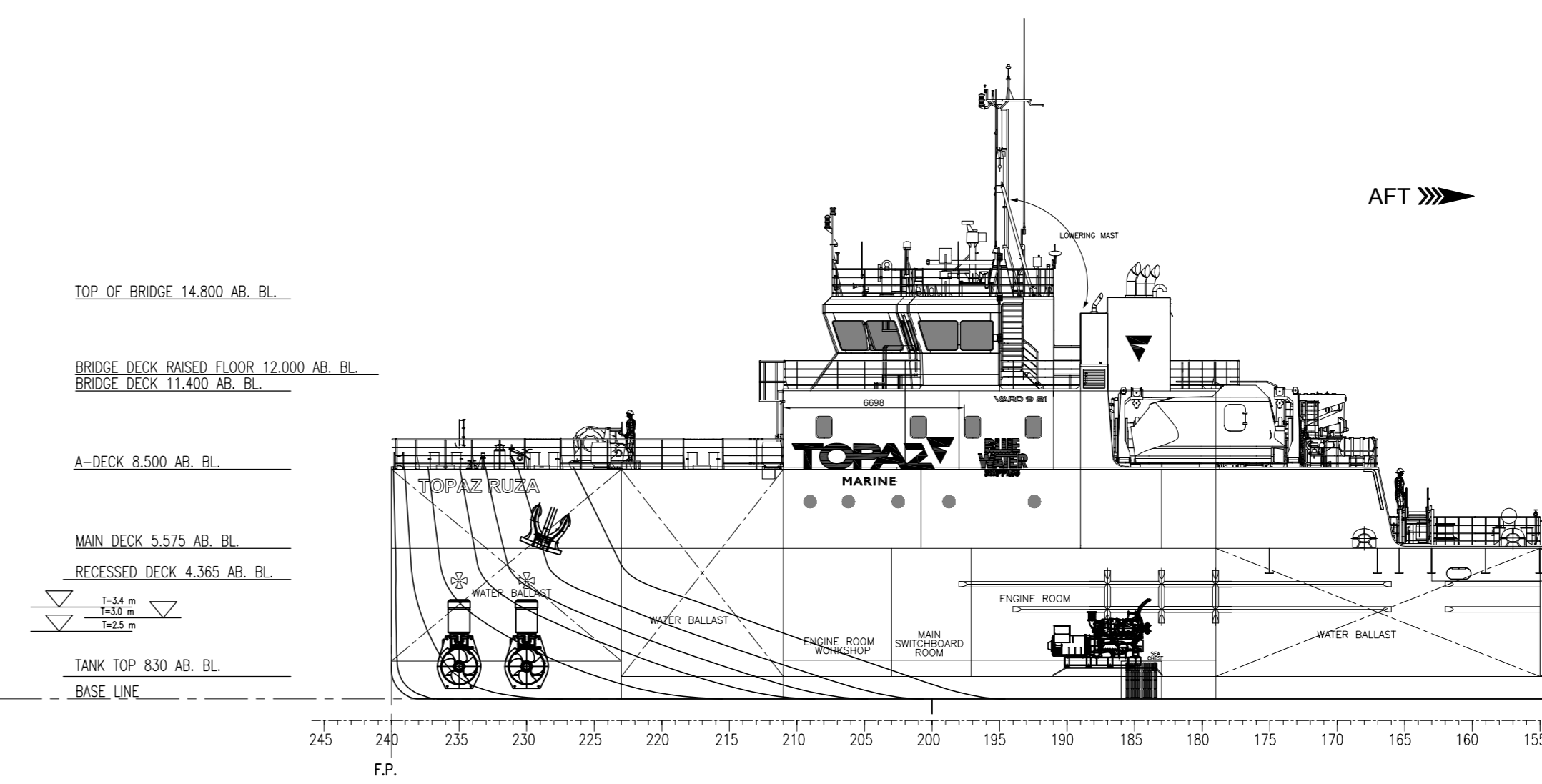
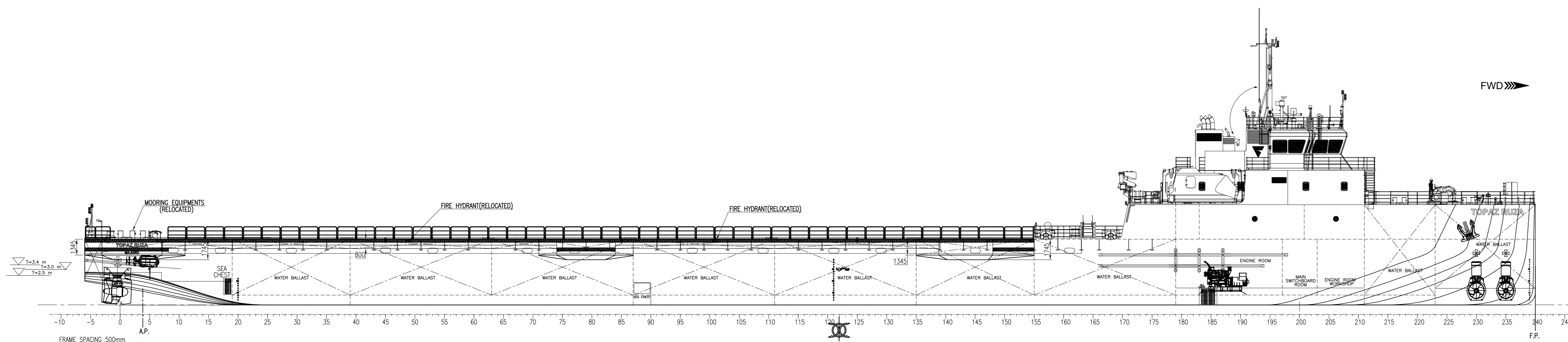
Bow thruster 2 x 500 kW Schottel tunnel thruster

Ballast pumps 2 x 1000 m<sup>3</sup>/hr, 1 x 500 m<sup>3</sup>/hr

Provision crane 1,000 kg@15 m radius

Anchors 2 x 2.3 T (fwd)

# GENERAL ARRANGEMENT PLAN - TOPAZ RUZA



**GENERAL NOTES:**  
 01. ALL DIMENSIONS ARE IN MM UNLESS OTHERWISE SPECIFIED  
 02. FRAME SPACING 500 MM UNLESS OTHERWISE SPECIFIED  
 03. \* MARKED DIMENSIONS ARE TO BE VERIFIED AT SITE.

**REFERENCE DRAWINGS:**

01.	869-101-001-GENERAL ARRANGEMENT PLAN
02.	EO-240820-DWG-02-STRUCTURAL DETAILS OF DECK WIDENING
03.	EO-240820-DWG-03-STRUCTURAL DETAILS OF MOORING EQUIPMENT INSTALLATION (AFT)
04.	EO-240820-DWG-05-STRUCTURAL DETAILS OF FLUSH TYPE MANHOLE
05.	EO-240820-DWG-07-STRUCTURAL DETAILS OF MOORING RECESS DECK CLOSURE
06.	EO-240820-DWG-09-FENDER ARRANGEMENT DETAILS
07.	EO-240820-DWG-10-STRUCTURAL DETAILS OF RELOCATED FIRE HYDRANT RECESS

**PRINCIPAL PARTICULARS**

LENGTH (O.A.)	: 123.00 m
LENGTH (B.P.)	: 118.80 m
BREADTH (MLD.)	: 16.50 m
BREADTH (O.A.)	: 20.50 m
BREADTH O.A. (INC. FENDERS)	: 20.77 m
DEPTH (MLD.)	: 5.60 m
MAX DRAUGHT MOULDED	: 3.40 m
BALLAST WATER	: 4400 m <sup>3</sup>
FRESH WATER	: 250 m <sup>3</sup>
FUEL OIL	: 270 m <sup>3</sup>
ACCOMMODATION	: 18 PERSON
SINGLE CABINS	: 14 PERSON
DOUBLE CABINS	: 04 PERSON
CLASS ID	: 18287311
IMO NUMBERS	: 9812286

**REVISIONS**

DATE	REV	DESCRIPTION	DRAWN	CHECKED	APPROVED
12/12/2024	5	SEE SHELL MARKING NO. NOT UPDATED AS PER CLIENT COMMENTS	DEV	JAN	NK
20/11/2024	4	DETAILED ARRANGEMENT VIEWS ADDED AS PER CLIENT COMMENTS	AA	JAN	NK
13/11/2024	3	FIRE HYDRANT RELOCATED AS PER DESIGN PROGRESS	UK	JAN	NK
28/10/2024	2	HANDHOLES REPLACED WITH MANHOLES AS PER CLIENT COMMENTS	SC	JAN	NK
30/09/2024	1	RECESS BEHIND RELOCATED AND BOTTOM PLATE SLOPE ADDED AS PER CLIENT COMMENTS	UK	JAN	NK
14/09/2024	0	INITIAL ISSUE	UK	JAN	NK

**CLIENT:** TOPAZ RUZA

**DRAWING TITLE:** GENERAL ARRANGEMENT PLAN

**PROJECT TITLE:** DECK WIDENING PROJECT

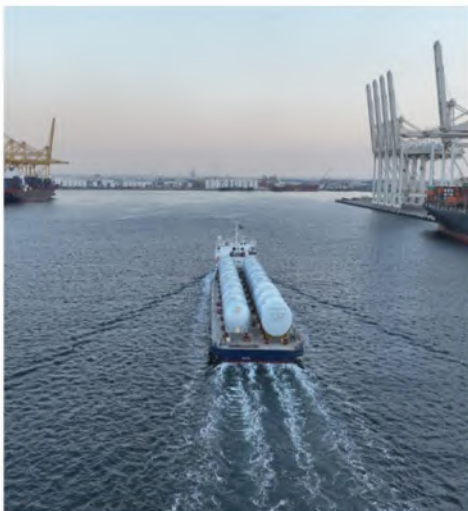
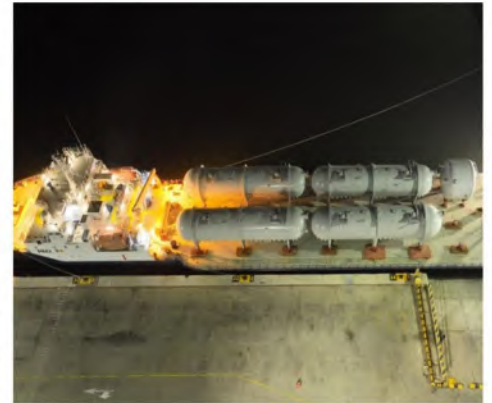
DRAWN	UK	PROJECT NO.	240820	DRAWING NO.	-	SCALE	1:200	REV.	5	SIZE	A0	SHEET	01 OF 01
CHECKED	JAN	DATE	12/12/2024	SCALE	1:200	REV.	5	SIZE	A0	SHEET	01 OF 01		
APPROVED	NK	DATE	12/12/2024	SCALE	1:200	REV.	5	SIZE	A0	SHEET	01 OF 01		

## Commercial Department P&O Maritime Logistics

Jafza 17, 3rd Floor, Jebel Ali Free Zone, P.O. Box 17000, Dubai, UAE

+971 4 440 47 00    commercial@pomaritime.com

<https://www.linkedin.com/company/478701/admin/>    <https://www.facebook.com/POMaritime>



All the detail are believed to be correct but not guaranteed and owners reserve the right to amend them.