

# Topaz Zenith

27.6 M - Crew Boat

Vessel Specifications



# Vessel Specifications

## Registration

Year build	2011
Flag / Port of Registry	Marshall Islands / Majuro
Class	DNV + 1A1 HSLC R3 CREW

## Dimensions

Length overall	27.6 m
Beam	7.5 m
Depth moulded	3.0 m
Draft	1.35 m

## Machinery

Main engine	2 x Caterpillar C32, 'D' rating, 1193 kW @ 2300 rpm
Generator sets	2 x Caterpillar C4.4, 69 kW @ 1500 rpm 50 hz
Propulsion	2 x Hamilton HM651 water jets
Gearbox	2 x Twin Disc MGX-6690 SC

## Capacities

Fuel oil	2 x 5,000 liters in integral aluminum tanks
Fresh water	2 x 2,500 liters in non-integral aluminum tanks
Sullage	1 x 1,000 liters in non-integral aluminum tanks
Deck load capacity	10 t
Deck loading	3 t / m <sup>2</sup>
Deck area	53 m <sup>2</sup> and mounting for 20' ISO container

## Deck equipment

Anchor	1 x HHP Anchor 117 kgs
Windlass	1 x Maxwell VW4000 24VDC
Bollards	Double Bit type - 08 nos
Marine deck crane	Effer 155 4S 3 t @ 4.4 m, 0.9 t @ 12.2 m

## Performance

Top speed	30 knots
Maximum continuous speed	25 knots
Economical speed	20 knots

## Communications

GMDSS radio	SAILOR SP3520
Fleet broad band	Thrane & Thrane FBB 150
SSAS + LRIT	Thrane & Thrane
PA system	Raymarine - including 4 internal speakers and 2 external horn speakers Satellite TV Coastal 24
Talk back system	1 x Zenitel I

## Navigation

Radars (2)	1 x Radar Sperry 1 x Radar Koden MDC-2510
ECDIS	1 x PC Maritime
AIS	1 x Jotron TR2500
Thermal camera system	1 x Nightnav NV1020
GPS	Koden - KGP913
Anemometer	1 x R M Young
Chart plotter	1 x Koden - GTD150
Search lights	3 x Francis A2528 L300RC 220V 1 kW RC
Echo sounder	1 x JMC F3000W
Magnetic compass	1 x Saura T150IIF
Gyro compass	1 x Sperry Navigat X MK2
Navtex receiver	1 x JMC NT2000
Autopilot	1 x Navitron NT888G
Inclinometer	1 x Cassens & Plath
Barometer	1 x Aneroid type 180 mm

# Vessel Specifications

## Safety and fire fighting

Life rafts	2 x 25 persons
Life jackets	41 x adult life jackets
Life buoys	2 x life buoys - SOLAS approved 2 x life buoys with signal lights - SOLAS approved 2 x life bouys with signal lights and smoke signals
Breathing apparatus	6 x EEBD, 15-20 minutes
Dacoon scoop	1 NO - Starboard side
EPIRB	1 x SRC - Korea
H2S detection system	1 x 4 channels - Honeywell - Touch Point model
First aid kit	1 no
Boat hook	1 no
Bell	1 x 20 cm
Co2 system	1 x fixed Co2 system @ 128 m <sup>3</sup>
Portable fire extinguisher	6 x 5 kg Co2 fire extinguisher 4 x 6 kg DCP fire extinguisher
Fireman outfit	1 x fireman suit with SCBA sets
Fire detection and alarm	1 x fixed fire detection system (4 zones)
FiFi pump	PTO driven centrifugal - 600 m <sup>3</sup> / hr
Emergency fire pump	1 x 15 m <sup>3</sup> @ 35 m
FiFi monitor	Water monitor SS150EL
International shore connectors	2 nos
CCTV	1 x each engine room 2 x passenger space monitored from bridge 2 channel systems

---

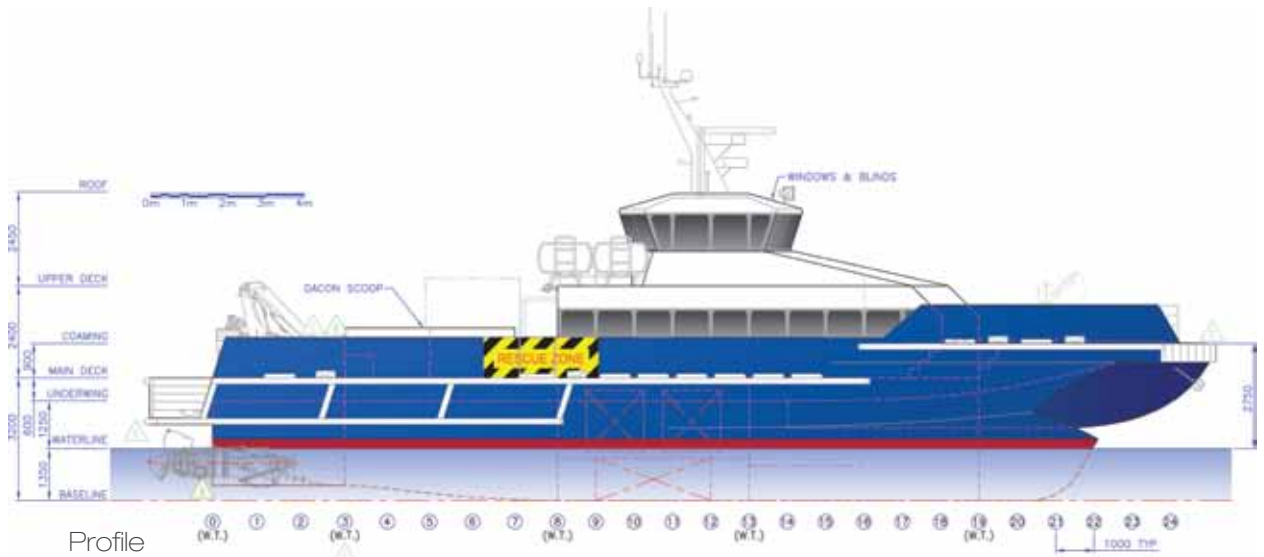
## Accommodation

Crew + catering	5 persons
Passengers	36 seats
Bunks	3 nos 1 x captain 2 x 2 berth crew cabins

All passengers and accommodation spaces are fully air-conditioned and equipped with satellite television.

Last revision June 2014

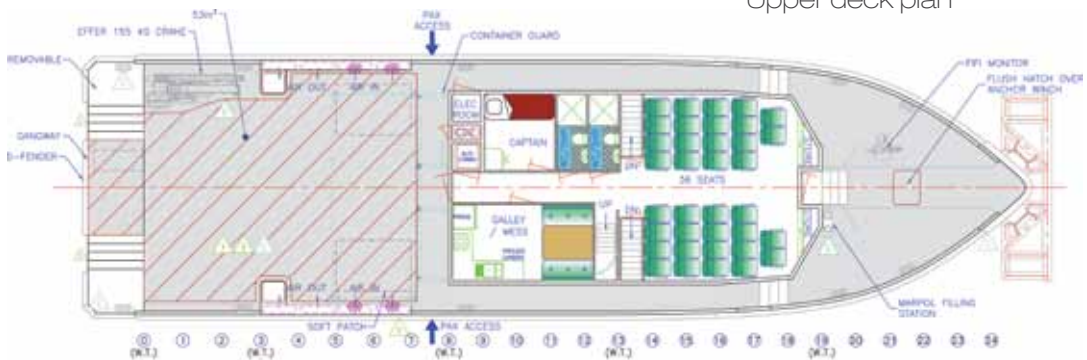
# GA Specifications - Topaz Zenith (Day Boat)



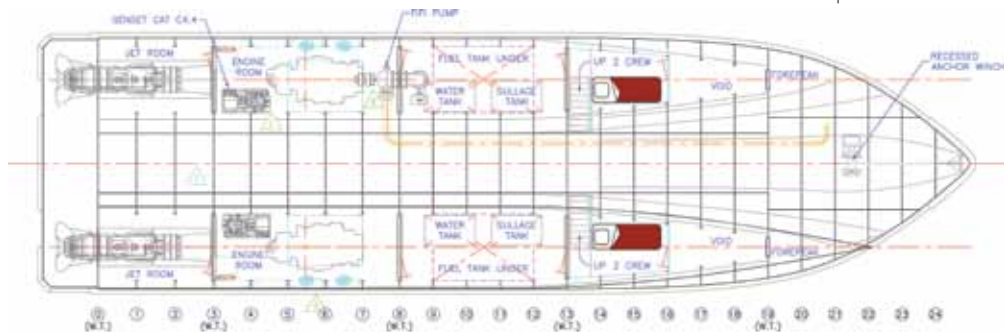
Profile



Upper deck plan



Main deck plan



Hull plan

## Principal dimensions

Length (LOA)	27.6 m	Deck area	53 m <sup>2</sup> and mounting for 20' ISO container
Beam	7.5 m	Speed	25 knots
Draft	1.35 m	Personnel	39 seats
Engines	2 x Caterpillar C32	Construction	Aluminium - hull and superstructure
Rating	1193 kW @ 2300 rpm	Classification	+ 1A1 DNV HSLC R3 CREW
Deck cargo	10 t @ 3 t / m <sup>2</sup>		



## Navmaster, ECDIS 700

Intelligent Navigation Solutions

Navmaster ECDIS is an established electronic chart display and information system, incorporating the input of many navigators into its design over more than ten years.

### Features

- Excellent route planning and detailed passage plan documentation
- Remote diagnostics feature for rapid and low-cost support
- Up-to-date chart installation and updating processes
- Option for radar video overlay



## Nightnav NV1020

Thermal imaging & ultra low light vision system

### Features

- Economical, rugged and easy to use
- State-of-the-art high resolution thermal imager
- Ultra low light camera
- High quality imaging in any lighting & environmental conditions

### Applications

- Situational awareness
- Object avoidance
- Aid to mariners
- Navigation / search and rescue
- Environmental monitoring
- Security / law enforcement
- All weather key asset protection



## Vision Master FT 250 Integrated Tabletop

The new, fully type approved integrated tabletop version with radar, chart radar and ECDIS provides all the standard features and capabilities.

### Features

- Available system configurations: radar, chart radar, ECDIS and ECDIS with radar overlay and TotalWatch (multifunction)
- Seamless integration of all available configurations for improved watchkeeping
- Comprehensive range of tools and features for the navigator
- Simple user interface
- Comprehensive help information including the innovative iHelp feature
- Fully type approved to the new international type approval standards of IEC 62388 and IEC 62288
- Built-in capability for upgrade path to different system configurations
- Radar systems available in a comprehensive range of antenna/transceiver configurations
- Direct compatibility with existing BridgeMaster E and BridgeMaster II top units



## Koden MDC 2510 Marine Radar

High performance and multi-function Koden Marine Radars with 15' color TFT LCD

### Features

- True trail function makes easy to distinguish moving from stationary objects
- ATA (Automatic Tracking Aid) with up to 50 targets showing latest information of other vessels ensuring safe navigation
- AIS interface up to 200 targets
- Map overlay with C-Map chart to provide clear radar pictures of coastline and bouys
- Dual station
- Interference rejection
- Target expansion

## CONTACT

Commercial Department  
Topaz Energy and Marine  
Level 58, Almas Tower, Jumeirah Lakes Towers  
P.O. Box 282800, Dubai, UAE  
Tel +971 4 440 47 00  
Fax +971 4 440 47 99  
Email [marketing.topaz@topaz-marine.com](mailto:marketing.topaz@topaz-marine.com)

## TOPAZ MARINE CASPIAN

BUE Caspian Ltd.  
3<sup>rd</sup> Floor, Gurban Khalilov Street 3  
Baku AZ1006 Azerbaijan  
Tel +994 124 97 87 87  
Fax +994 124 97 25 96  
Email [topazmarine.azn@topaz-marine.com](mailto:topazmarine.azn@topaz-marine.com)

Topaz Marine Kazakhstan  
BUE Kazakhstan Limited  
2<sup>nd</sup> Floor, Building 80, Micro Region 14  
P.O. Box 130000, Aktau, Republic of Kazakhstan  
Tel +7 7292 42 82 72  
Fax +7 7292 42 82 77  
Email [tmkzh.aktauoffice@topaz-marine.com](mailto:tmkzh.aktauoffice@topaz-marine.com)

Topaz Asktrakhan Limited  
7, Turgeneva srt, 2<sup>nd</sup> Floor  
Astrakhan, Russia  
Tel +7 8512 23 80 72  
Fax +7 8512 23 80 72  
Email [topaz.astr@topaz-marine.com](mailto:topaz.astr@topaz-marine.com)

## TOPAZ MARINE GLOBAL

Nico Middle East Ltd.  
P.O. Box 261005, Building 33, Oilfields Supply Centre  
Jebel Ali Free Zone, Dubai, UAE  
Tel +971 4 883 29 29  
Fax +971 4 883 29 59  
Email [marketing.global@topaz-marine.com](mailto:marketing.global@topaz-marine.com)

## TOPAZ MARINE MENA

Doha Marine Services WWL  
P.O. Box 37102, 4<sup>th</sup> Floor, Faisaliyah Building,  
Suhaim Bin Hamad Street, Al Sadd Area  
Doha, State of Qatar  
Tel +974 4410 48 00  
Fax +974 4447 94 73  
Email [marketing.mena@topaz-marine.com](mailto:marketing.mena@topaz-marine.com)

Topaz Marine Saudi Arabia Co. Ltd.  
Office 902, 9<sup>th</sup> Floor, Al Jarbou Tower, Dharan Street  
P.O. Box 4905, Al Khobar 31952  
Kingdom of Saudi Arabia  
Tel +966 13 835 36 30  
Fax +966 13 833 41 58  
Email [saudi.arabia@topaz-marine.com](mailto:saudi.arabia@topaz-marine.com)