

Topaz Responder

51m - DP1 - ERRV

Vessel Specifications



Vessel Specifications

General

Flag	Marshall Islands
Class	A1, Safety Standby Service GR B 300, Fire Fighting Vessel Class 1, AMS, ACCU, DPS-1
Year built / builder	2015 / Nico Craft Abu Dhabi LLC
Port of registry	Majuro
IMO number	9544293
Call sign	V7PW9

Dimensions

Length overall	50.9 m
Length between perpendicular	44.4 m
Breadth moulded	13 m
Depth moulded	4.9 m
Design draft	4 m
Deadweight	775 t
Deck cargo capacity	170 t
Gross Tonnage	1198t
Net Tonnage	359t

Machinery

Main engines	2 x Caterpillar 3512B, 1425 bkW @ 1600 rpm
Main generators	2 x Caterpillar 3406 CTA, 320 kW / 60 Hz / 1800 rpm
Emergency generator	1 x Caterpillar C4.4 72e kW / 60 Hz /1800 rpm
Schottel bow thruster drive	1 x Caterpillar C18, 500 kW/ 60 Hz / 1800 rpm
Gear box - main propulsion	2 x Ratio 4.63:1, Twin Disc MGX 5600 DC
Bow tunnel thruster	1 x Schottel STT1 CP, 300 kW, CPP, electric driven
Pump jet thruster	1 x Schottel SPJ 132T, 330 kW @ 1900 rpm, diesel driven
Schottel pump jet drive	1 x Caterpillar 3406TA, 480 BHP / 358 bkW @ 2100 rpm
Propulsion system + rudder + kort nozzle	2 x straight shaft + FPP, Teignbridge
Steering system	1 set Wills Ridley

Mooring Equipment

Anchor windlass	Nor Crane, electro-hydraulic w/., two cable lifters, one mooring drum and two warping heads, with local control, 4 tonnes @ 10 m per min
Anchor, chains etc	2 x Fender Care, 1590 kg stockless bower, anchor cert and 34mm dia x 412.5 meter Grade U2 Stud Link Anchor chains
Chain stoppers / rollers	2 x Nor Crane
Capstan	2 x Nor Crane, pull 5 tonnes @ 10 m per min

Ancillary equipment

Sewage treatment plant	1 x Tecnicomar, 12 person cap.
Oily water separator	1 x Ocean Clean, 0.5 m ³ per hr @ 15 ppm
Freshwater maker	1 set

Deck Crane

Manufacturer	Nor Crane
SWL and radius	2.2t @ 1.9M Min. Outreach Radius & 12.0M Max. Outreach Radius

Towing and anchor handling equipment

Rubber Bow fenders	Fender Care, W-type fender
--------------------	----------------------------

Performance

Economic speed	11.8 knots
Max speed	12.65 knots

Vessel Specifications

Capacities

Fuel oil @ 98%	230.42 m ³
Fresh water @ 100%	195.81 m ³
Water ballast @ 100%	176.15 m ³
Lube oil @ 98%	6.8 m ³
Sewage @ 98%	9.47 m ³
Hydraulic oil @ 98%	2.82 m ³
Oily bilge @ 98%	5 m ³
Sludge @ 98%	2.4 m ³
Deck wooden area	100 m ² approx.
Clear deck length	21.6 m long

Fire fighting and anti-pollution equipment

External FiFi system	1 x CounterFire / FFS
Fire monitors	2 x 1200 m ³ per hr each minimum
Emergency fire pump	1 x 25 m ³ per hr @ 5 bar

Safety equipment

Inflatable life rafts	4 x 25 persons Viking
Rescue boat	1 x 6-person capacity Narwhal
Davit for rescue boat	1
Rigid life jackets	343 nos.
Immersion suits	12
Rescue basket	1 x Dacon
Dacon scoop	1 x Dacon
FRDC & davit	2 x 15-person capacity, Palfinger

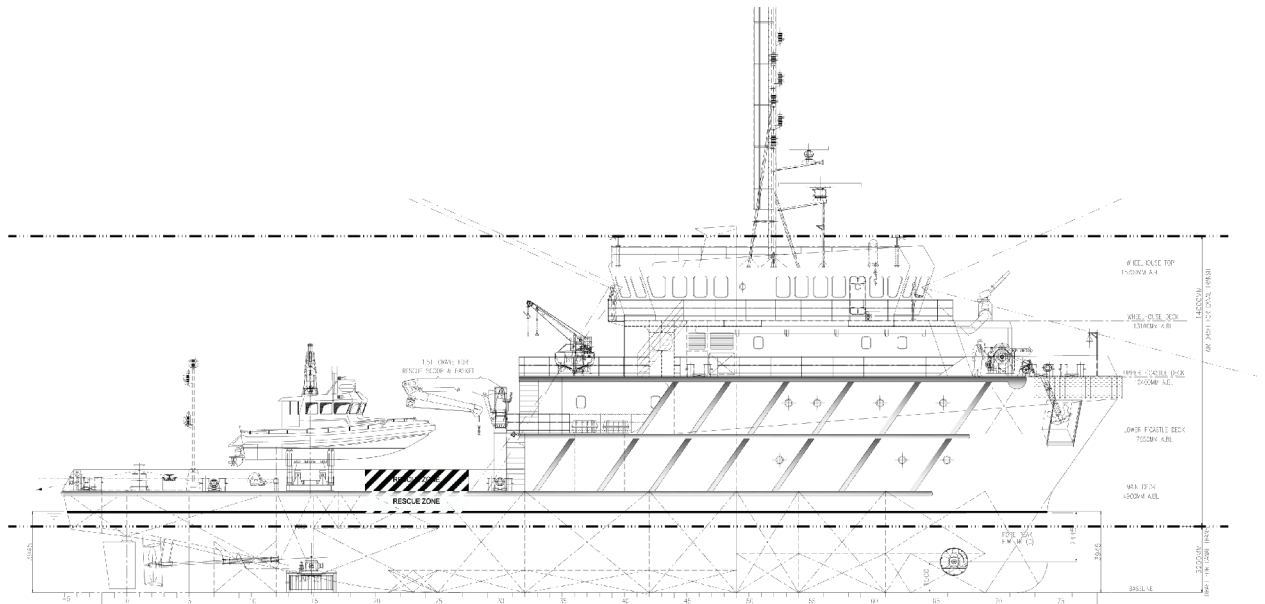
Accommodation

Treatment room	1 berth
Recovery area	9 x 2 berths
	2 x 1 berth
Lower forecastle deck	4 x 4 berths
	4 x 1 berth
Upper forecastle deck	4 x 2 berths
	4 x 1 berth
Freezer area	8.83 m ²
Chiller	9.65 m ²

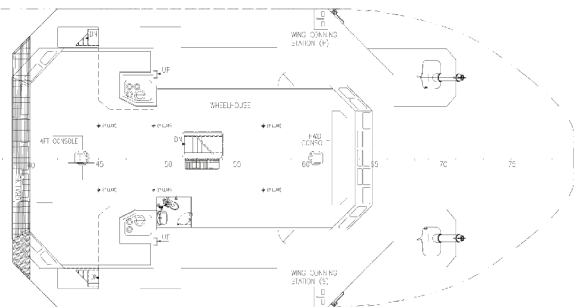
Survivor Accommodation

Reception area	Yes
Treatment room	Area not less than 15 m ² w/ scuppers
Sanitary facilities	4 x showers, 4 x WC & 4 WHB
Recovery area	20 x survivors approx.
Decontamination area	Yes
Survivor dedicated seating	50 minimum
Total survivor capacity	300 maximum
Facilities for deceased	10 corpses

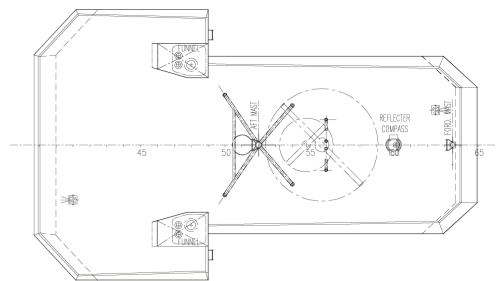
GA Specifications



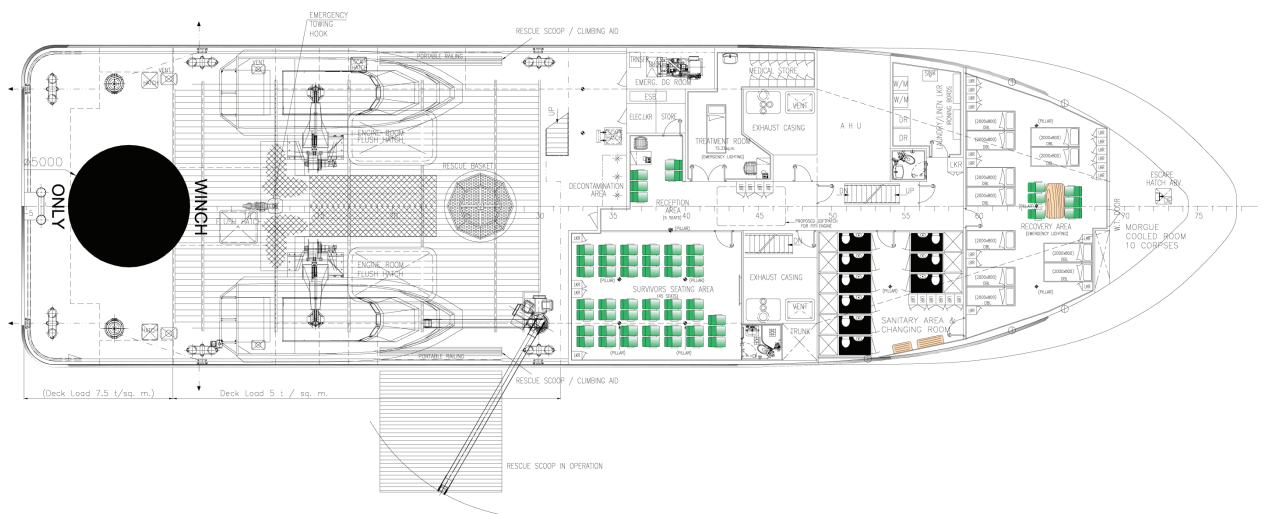
Outboard profile



Wheelhouse deck

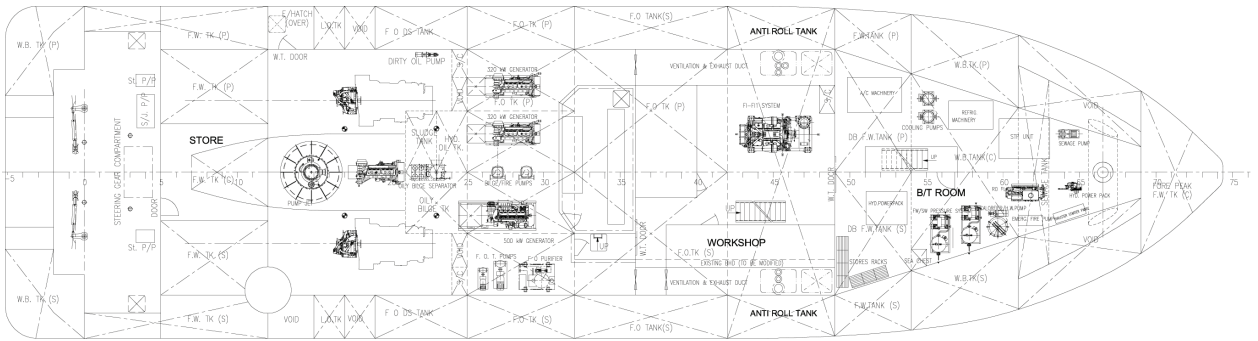


Wheelhouse top

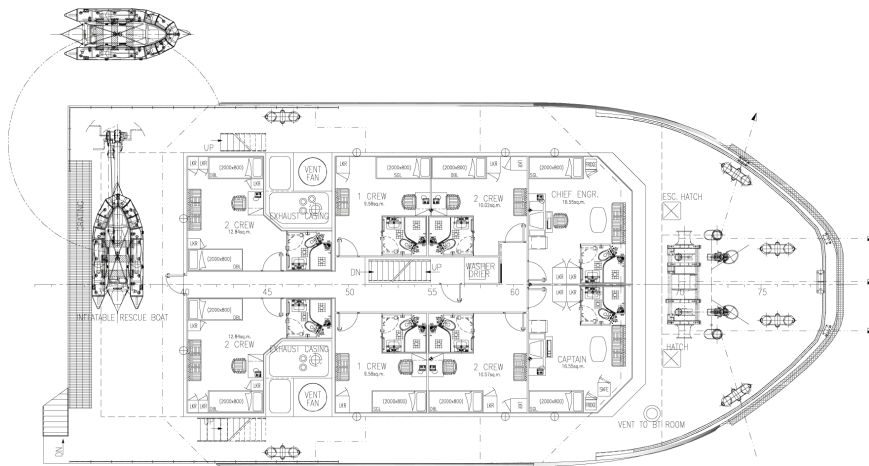


Main deck

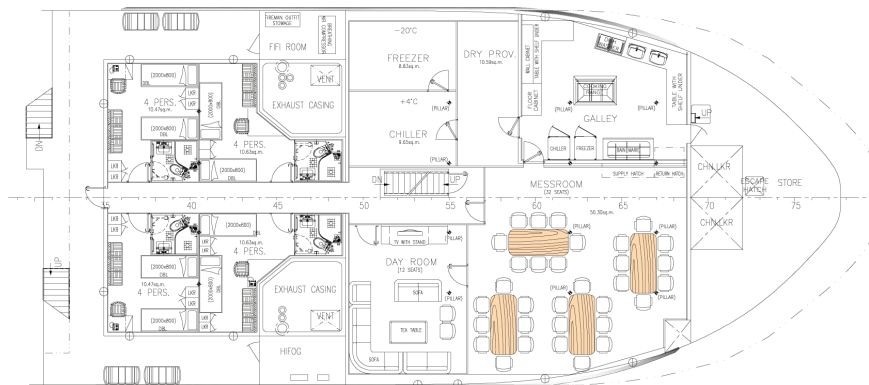
GA Specifications



Below main deck



Upper forecastle deck



Lower forecastle deck

CONTACT

Commercial Department

Topaz Energy and Marine

Level 58, Almas Tower, Jumeirah Lakes Towers

P.O. Box 282800, Dubai, UAE

Tel +971 4 440 47 00

Fax +971 4 440 47 99

Email commercial.topaz@topazworld.com