

Topaz Oryx

63M - 6800 BHP - DP 1 - FiFi 1 - AHTSV

Vessel Specifications



Vessel Specifications

Registration

Year built / builder	2010 / Yard 270, ABG Shipyard, Surat, India
Class	DNV 1A1 Fire Fighter (I) Supply Vessel Tug DK (+) DYNPOS (AUT) EO HL(2.4) SF TMON
Flag	Marshall Islands
Port of registry	Majuro
IMO No.	9419981
Call sign	V7EX5

Dimensions

Length overall	63.4 m
Breadth moulded	15.8 m
Depth moulded	6.8 m
Draught max	4.8 m
Deadweight	1575 t
Registered tonnage	GRT 1943 t / NRT 650 t

Machinery

Main Engines	2 x Yanmar 2500 kW 1000 rpm (6800 BHP / 5000 kW)
Main propulsion	2 x 4 blades in nozzles with 3.8 m diameter
Aux generators	4 x 425 kW 440V 60Hz 3 ph
Emergency generator	1 x 99 kW
Rudders	2 x CCP Rolls Royce
Bow thruster	1 x 500 kW / 680 bhp tunnel
Stern thruster	1 x 500 kW / 680 bhp tunnel

DP equipment

Dynamic position	AUT (DP 1) Kongsberg
DP reference system	1 x DGPS and 1x Fan beam

Capacities 100%

Fuel oil	804 m ³
Fresh water	484 m ³
Liquid mud	290 m ³ + 120 m ³
Brine	Combining mud tanks
Drillwater / ballast	538 m ³
Dry bulk	206 m ³ (4 tanks)
Foam tank	20 m ³
Dispersant tank	20 m ³
Deck area	420 m ² (31 m x 12.8 m)
Deck cargo	600 tonnes
Deck strength	5 tonnes
Cool store / freezer	1 x 11 m ³ / 1 x 13 m ³
Dry provision	1

Discharge rates

Load / discharge station	P / S side
Fuel discharge	120 m ³ per hr
Mud discharge	60 m ³ per hr
Brine discharge	60-120 m ³ per hr
Drillwater discharge	60-120 m ³ per hr
Dry bulk discharge	20 m ³ per hr
Fresh water discharge	150 m ³ per hr

Vessel Specifications

Performance

Bollard pull	85 t
Max speed	13.5 knots
Service speed	10.5 knots
Economical speed	10.5 knots

Towing / Anchor handling / Mooring

Towing / anchor handling winch	2 x Brattvaag 150 tonnes pull / 250 tonnes break
Towing / anchor handling winch dim	800 mm diameter x 2090 diameter x 1600 mm
Towing / anchor handling winch cap	1000 m x 62 mm wire each
Tugger winch	2 x Brattvaag 10 tonnes
Deck crane	1 x deck crane 3 mt / 12 m
Windlass	1 x Brattvaag 6 tonnes
Capstans	2 x Brattvaag 8 tonnes
Storage reel	1 x 1200 m x 62 mm
Rig chain gipsies	2 x 76 mm
Chain lockers	2 x 60 m ³
Towing pins	1 x pair 200 tonnes SWL
Stern roller	3.6 m x 1.5 m diameter SWL 200 t
Shark jaws	1 x 200 tonnes SWL
Towing wire	1200 m of 62 mm
Spare tow wire	1200 m of 62 mm
Work wire A/H	1 x 600 m x 64 mm / Spare: 1 x 150 m x 58 mm
Grappels for chain	1 x 130 tonnes SWL
Forged J Chaser	1 x 130 tonnes SWL, J type
Spooling device	Yes

Navigation and communication

Radar	2 x Furuno FR-2115
Gyro	Sperry Marine / Navigat x mk 2
Autopilot	Sperry Marine / Navipilot v hsc
Navtex	Furuno NX-700
Joystick	Kongsberg CJoy
AIS	Furuno FA-150
Echo sounder	Furuno FE-700
Speed log	Furuno DS-80
Satellite navigator (GPS)	Furuno GP-150
Wind sensors	Young / Wind tracker
GDMSS sea area	A1, A2, A3
MF / HF radio	Furuno FS-2570
DSC receiver	1 Furuno FM8800
VHF	2 x Furuno FM8800S
Portable radio	5 x Motorola GP-339
Mobile telephone	0813-30940916 / +55 (84) 91561778
Mini-M	Fleet 77
Sat C 1	Furuno Felcom-15
Intercom system	Hanshin / HPA-9200-2
VSAT	Sat. Nav iDirect 3000

Vessel Specifications

Rescue equipment

Hospital	1 x sick bay
Fire fighting equipment	FiFI 1.2 x 1200 m ³ pr hr
MOB boats	FRC for 9 persons / 120 HP
MOB boat engine	2 x 60 HP outboard Mercury
Radar transponders	2 x SART / RT-10
Emergency beacon	1 x EPIRB / Float free type
GDMSS VHF	3 x Furuno FM-8
Survival suits	36 pieces / 1 in each cabin
Life jackets	58 pieces
Life rafts	2 x 20 men and 2 x 25 men
Rescue nets	2 x scramble net P&S main deck
Spray boom	2 x spray boom P+S m. deck.
Anti-pollution material	Oil spill dispersant

Accommodation

Cabins / beds	4 x 1 man plus 12 x 2 men cabins
Crew / passengers	28 men
Mess / dayroom	2
Air condition	In all living rooms

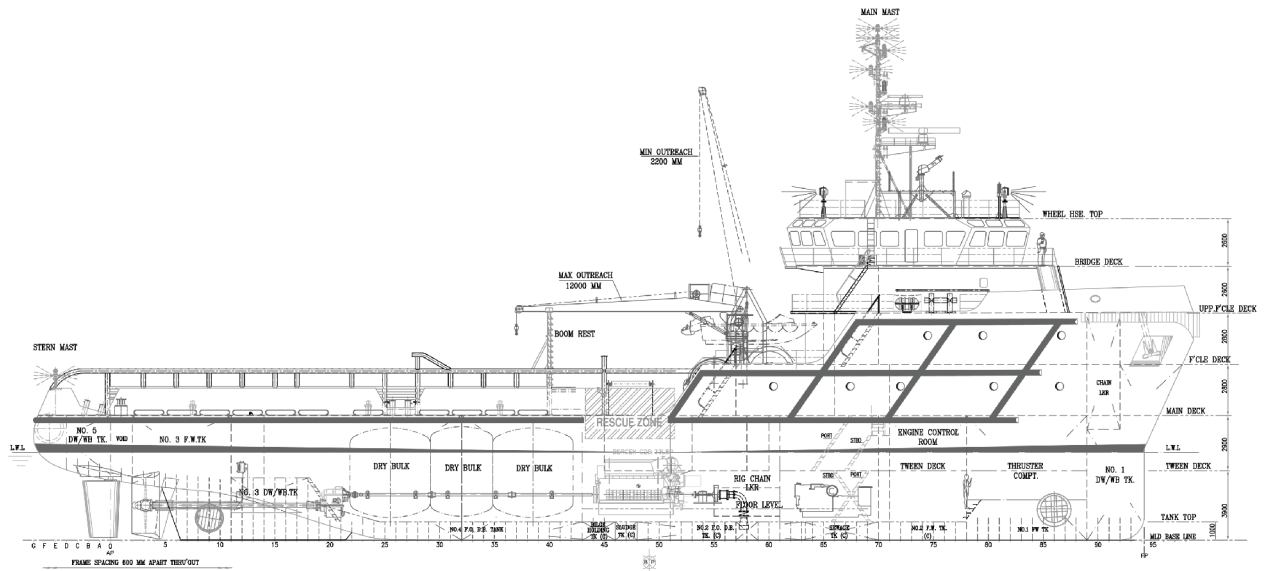
Last revision May 2016

Tank Capacities

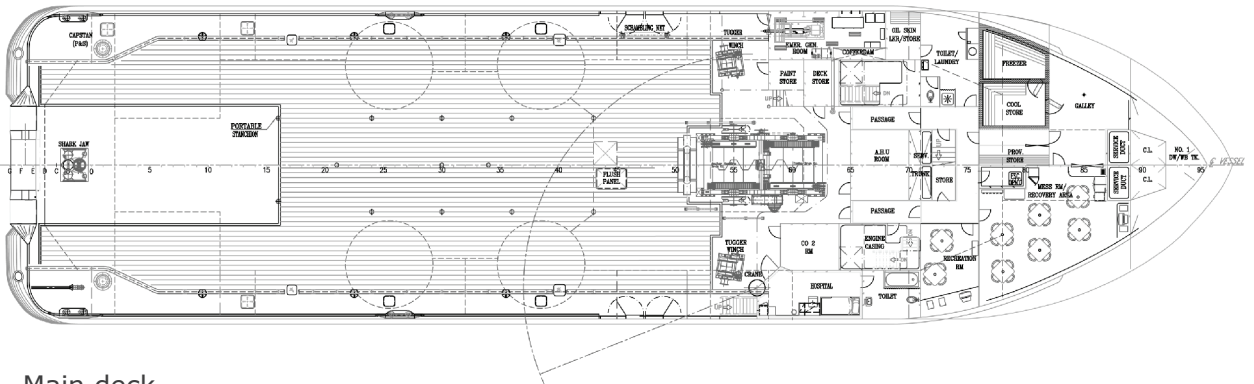
	SG	Fuel oil	Pot water	Drill water	Ballast water	Liquid mud	Brine m3	Base oil	Methanol	Dry bulk	Oil recovery
	m3	0,850	1,000	1,000	1,025	2,500	2,500	0,830	1,120	1,380	1,000
NO.1 F.W . TK (P)	106.8										
NO.1 F.W . TK (S)	106.80		106.80								
NO.2 FW TK (P)	96.10		96.10								
NO.2 FW TK (S)	96.50		96.50								
NO.3 F.W . TK (P)	38.90		38.90								
NO.3 F.W . TK (S)	38.90		38.90								
NO. 1 DW / WB TK	104.40				107.01						
NO. 2 DW / WB TK (P)	126.90				130.07						
NO. 2 DW / WB TK (S)	126.90				130.07						
NO. 3 DW / WB TK (C)	33.30				34.13						
NO. 4 DW / WB TK (P)	51.10				52.38						
NO. 4 DW / WB TK (S)	51.10				52.38						
NO. 5 DW / WB TK (P)	22.50				23.06						
NO. 5 DW / WB TK (S)	22.50				23.06						
NO. 1 F.O. TK (P)	135.40	115.09									
NO. 1 F.O. TK (S)	130.50	110.92									
NO. 2 F.O. D.B. TK ('C)	60.80	51.68									
NO. 3 F.O. TK (P)	135.60	115.26									
NO. 3 F.O. TK (S)	135.60	115.26									
NO. 4 F.O.D.B. TK (P)	64.30	54.65									
NO. 4 F.O.D.B. TK (S)	64.30	54.65									
FO SETTLING TANK (P)	13.60	11.56									
FO SETTLING TANK (S)	13.60	11.56									
FODS TANK (P)	25.60	21.76									
FODS TANK (S)	25.60	21.76									
1+A9+A16	28.40										
SLUDGE TK ('C)	8.10										
BILGE HOLDING TK (C)	10.70										
DISPERSANT TANK (P)	21.30										
FOAM TK (S)	21.30										
NO 1 LIQUID MUD TK (P)	72.70					181.75					
NO 1 LIQUID MUD TK (S)	72.70					181.75					
NO 2 LIQUID MUD TK (P)	72.30					180.75					
NO 2 LIQUID MUD TK (S)	72.30					180.75					
RIG CL/LIQ MUD TK (P)	65.00										
RIG CL/LIQ MUD TK (S)	65.00										
CEMENT TANK 1	63.80									88.04	
CEMENT TANK 2	63.80									88.04	
CEMENT TANK 3	39.40									54.37	
CEMENT TANK 4	39.40									54.37	
Weight in Tons		684.2	377		552	725				285	
Volume in m³		804.9	377		538	420				206	

All figures shown are based on tank volume at 100% filling.

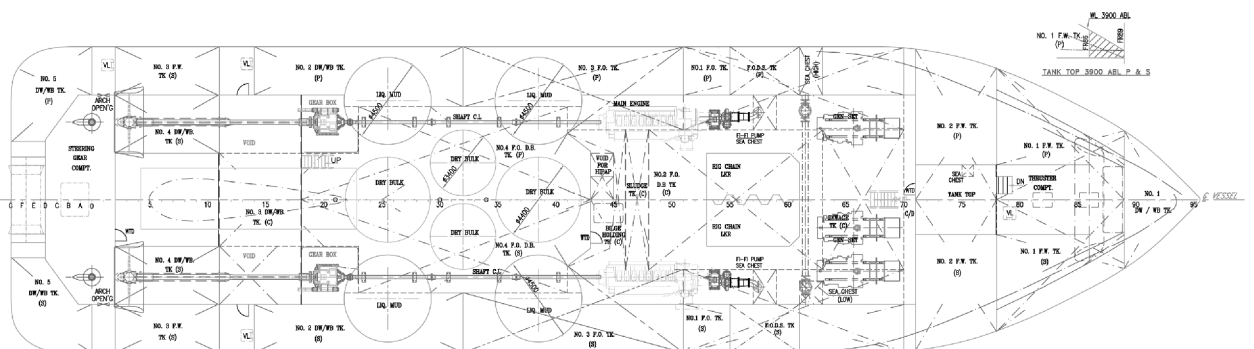
GA Specifications



Profile

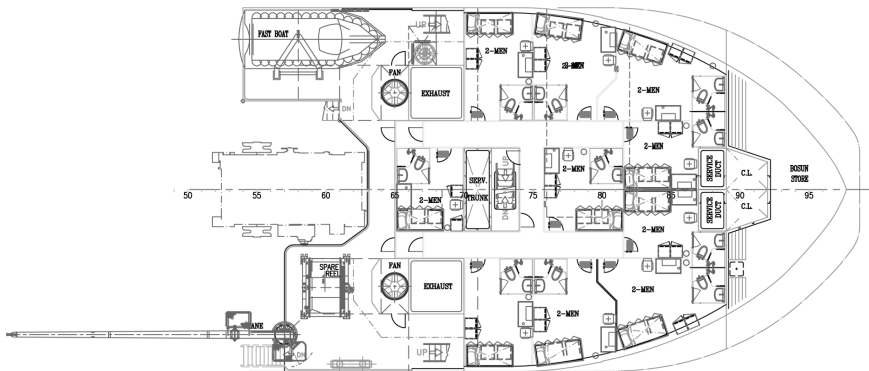


Main deck

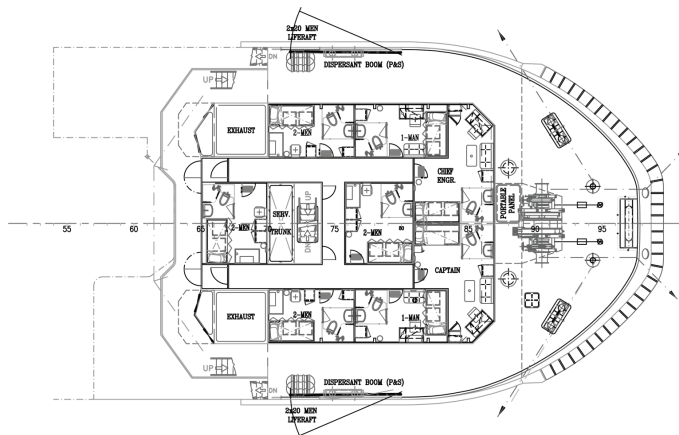


Below deck

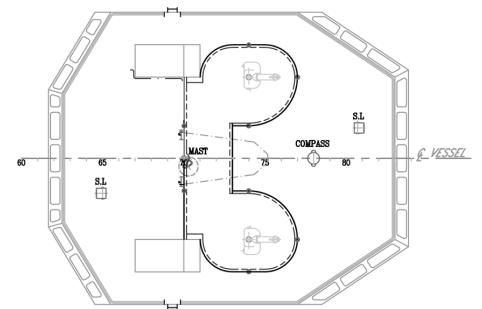
GA Specifications



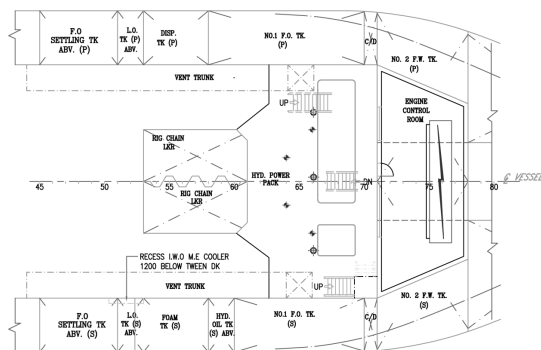
Forecastle deck



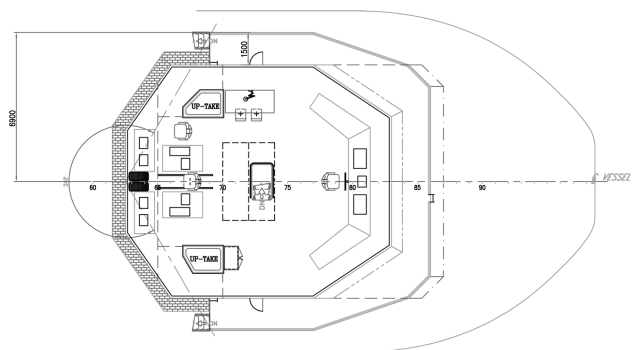
Upper forecastle deck



Nav. bridge deck



Tween deck



Bridge deck

CONTACT

Commercial Department
Topaz Energy and Marine
Level 58, Almas Tower, Jumeirah Lakes Towers
P.O. Box 282800, Dubai, UAE
Tel +971 4 440 47 00
Fax +971 4 440 47 99
Email commercial.topaz@topazworld.com

TOPAZ MARINE CASPIAN
BUE Caspian Limited
5th Floor, ISR Plaza Business Centre
69 Nizami Street, Baku
AZ1005 Azerbaijan
Tel +994 124 97 87 67
Fax +994 124 97 25 96
Email commercial.caspian@topaz-marine.com

BUE Kazakhstan Limited
2nd Floor, Building 80, Micro Region 14
P.O. Box 130000, Aktau
Republic of Kazakhstan
Tel +7 7292 42 82 72
Fax +7 7292 42 82 77
Email commercial.caspian@topaz-marine.com

BUE Marine Turkmenistan Limited
Bitarap Turkmenistan Shayoly 231,
Oguzkent Hotel Business Centre,
Office 401, Ashgabat, Turkmenistan
Tel +993 12 44 99 38
Fax +993 12 44 99 39
Email commercial.caspian@topaz-marine.com

Topaz Astrakhan Limited
7, Turgeneva str, 2nd Floor
Tel +7 8512 23 80 72
Fax +7 8512 23 80 72
Email commercial.caspian@topaz-marine.com

TOPAZ MARINE MENA
Doha Marine Services WWL
P.O. Box 37102, 4th Floor, Faisaliyah Building
Suheim Bin Hamad Street, Al Saad Area
Doha, State of Qatar
Tel +974 4410 48 00
Fax +974 4447 94 73
Email commercial.mena@topaz-marine.com

Topaz Marine Saudi Arabia Co Ltd.
P.O. Box 4905, Al Jarbou Tower, 9th Floor,
Office 902
Dhahran Street
Al Khobar 31952, Kingdom of Saudi Arabia
Tel +966 13 835 36 30
Fax +966 13 833 41 58
Email commercial.mena@topaz-marine.com

TOPAZ MARINE AFRICA
Topaz Marine Angola
138 Ilha do Cabo
Avenida Murtala Mohammed
Luanda, Angola
Tel +244 222 7250 55
Email commercial.africa@topaz-marine.com

Topaz Marine Nigeria
3rd Floor, Atlantic House
121 Louis Solomon Close, Ahmadu Bello Way
Victoria Island, Lagos, Nigeria
Email commercial.africa@topaz-marine.com