

# Topaz Mamlaka

62 M - 5,220 BHP - DP2 - Anchor Handling Tug Supply Vessel

Provisional Vessel Specifications



# Vessel Specifications

## General

Flag	Singapore
Class	ABS +A1, +AMS, Circle E, Offshore Support Vessel (AH, Tow, Supply HNLS, FFV1, DPS 2)
Year built / builder	2015 / Berjaya Dockyard Sdn Bhd, Malaysia
Port of registry	Majuro
IMO number	9695717

## Dimensions

Length overall	61.8 m
Length WL	58.3 m
Beam (moulded)	16.5 m
Depth (moulded)	6.5 m
Design draft	4.5 m
Max draft (moulded)	5 m
Complement	42 men
Deadweight	1500 t approx
Deck area	410 m <sup>2</sup> approx
Deck cargo	600 t approx
GRT	2131 approx

## Machinery

Main engines	2 x 1920kW @ 750 rpm. Yanmar 6EY26W
Main generators	3 x 450 ekW 415V/3ph/ 50 Hz. CAT C18
Shaft generator (Main engine)	2 x 1100 kW 415V/3ph/ 50 Hz. Leroy Somer M51
Emergency generator	1 x 136 kW 415V/3ph/ 50 Hz. CAT C6.6
Bow tunnel thruster	2 x approx. 670kW CPP, electric driven. Kawasaki KT 88B3
Propulsion system	2 x Azimuth Thrusters

## Deck equipment

Deck crane	1 x 7.5T @5m Deck cum Rescue crane. Sekwang SKH RBPC
Anchor windlass / Mooring winch	1 x Hydraulic Anchor Windlass / Mooring Winch Anchor windlass: 36mm U3 studlink Gypsy: 12T at 0-12 m per min Drum: 100m x 96mm dia PP rope, 8T at approx. 10 m per min
Anchor	2 x HHP 1575 kg
Chain cable	440m x 36 mm dia, U3
Mooring line	2 x 220 m PP ropes, 20000 kg break strength
Capstan	2 x 5 tonnes @ 0 to 15 m per min
Anchor handling / Towing winch	1 x hydraulic double drum winch 150/65 T at 0-2.5/6 m/min
Tugger winch	2 x 10T hydraulic winch Drum capacity min. 200m x 20mm dia. Steel 10t m per tonnes @ 0 to 10 m per min
Storage reel	1x 10T at 0-20 m per min, 58mm dia x 1000M SWR

## Ancillary equipment

Sewage treatment plant	1 x 46 person capacity
Oily water separator	1 x 1 m <sup>3</sup> per hr
FW/ SW pressure set	2 set, 10 m <sup>3</sup> per hr at 35 psi, 750 l tank each

## Performance

Trial speed @ 100% MCR	13 knots approx
Bollard pull	60 t approx
Endurance	Approx 5000 nautical miles at 11 knots

# Vessel Specifications

## Tank Capacities

Fuel oil	527 m <sup>3</sup> approx
Fresh water	413 m <sup>3</sup> approx
Water ballast	546 m <sup>3</sup> approx
Lube oil	20 m <sup>3</sup> approx
Sewage	16 m <sup>3</sup> approx
Hydraulic oil	3 m <sup>3</sup> approx
Bilge	11 m <sup>3</sup> approx
Dirty oil	11 m <sup>3</sup> approx
Dry bulk	160 m <sup>3</sup> approx
Liquid mud	398 m <sup>3</sup> approx
Base oil	125 m <sup>3</sup> approx

## Transfer Rates

Fuel oil transfer pump	1 x 20 m <sup>3</sup> per hr @ 20m
Fuel oil cargo pump	1x 100m <sup>3</sup> per hr @ 75m
FW cargo pump	1x 100 m <sup>3</sup> per hr @ 75m
DW cargo pump	1x 100 m <sup>3</sup> per hr @ 75m
LO transfer pump	1 x 3 m <sup>3</sup> per hr @ 20 m
Brine pump	2x 100 m <sup>3</sup> per hr @ 90m
Emergency fire pump	1 x 40 m <sup>3</sup> per hr at 70m
Air compressor	2 x 25 m <sup>3</sup> per hr @ 30 bar, electric driven
Dirty oil pump	1 x 8 m <sup>3</sup> per hr @ 30m
Fuel oil purifier	1 x 2600 litres per hr
Bilge / Ballast pump	1 x 60 m <sup>3</sup> per hr @ 60m
Bilge pump	1 x 60 m <sup>3</sup> per hr @ 60m
GS / Fire pump	1 x 60 m <sup>3</sup> per hr @ 60m

## Communication and navigation equipment

GMDSS	A3 area set 1x MF/HF Radio with transmitter c/w DSC 2 x VHF Radio telephone transceiver c/w DSC 2x Inmarsat C Mobile station
Navtex	1 x IMO type
GPS	1 set
SART	2 x IMO type
EPRIB	1 nos.
Walki-talkie	3 x GMDSS
Echosounder	1 nos.
Radars	2 x 96NM X Band c/w ATA
Magnetic Compass	1 nos.
AIS	1 nos.
SSAS	1 set
Speed log	1 nos.
Gyro compass	1 set , 1 master , 5 repeaters
Anemometer	3 nos.
PA / Intercom	1 set
Autopilot	1 nos.
Sound power phones	As required
Navigational lights	As required
BNWAS	1 set

# Vessel Specifications

## Fire fighting equipment

Fixed fire fighting system	CO2 System
External FiFi pump	Fixed water fire fighting system for ER
Fire monitors	2 x1800 m <sup>3</sup> per hr each (Shaft generator driven)
Foam fire extinguisher	2 x1200 m <sup>3</sup> per hr each
Dry chemical powder extinguisher	9 x 9 litres, 1 x 45 litres
	32 x 9 kg

---

## Dynamic Positioning equipment

DP control cabinet	DP 2 System
	c/w all necessary controls and sensors

---

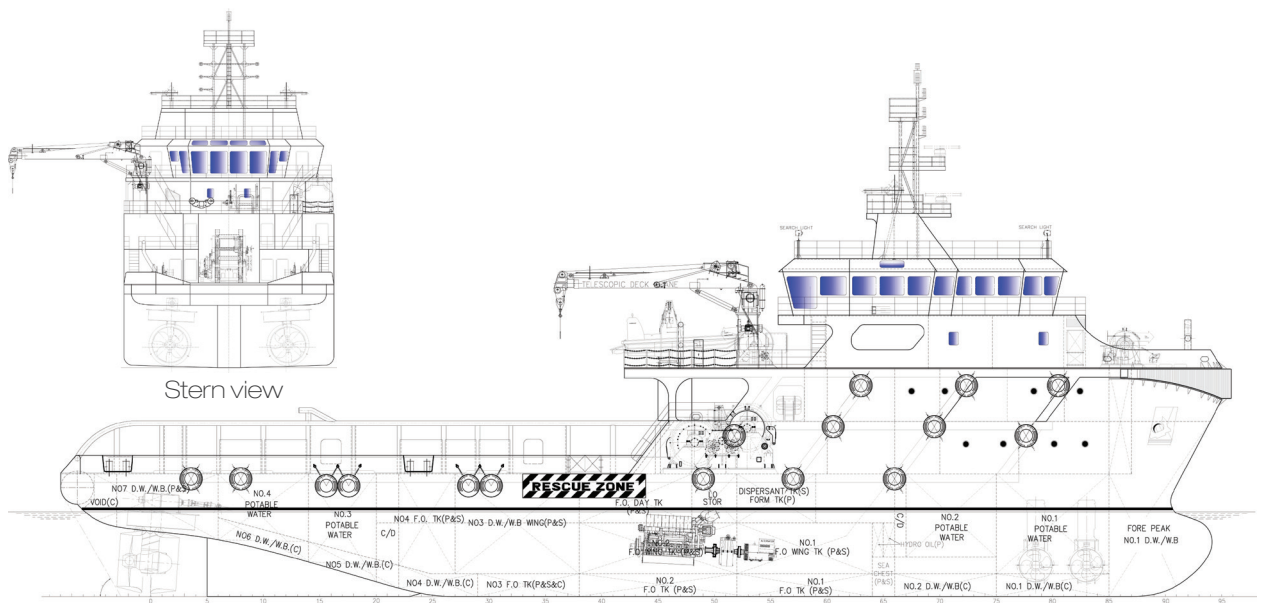
## Safety equipment

Inflatable life rafts	4 x 25 persons SOLAS approved
Rescue boat	1 x 6 men
Fast rescue craft	1 x 15 men (Not part of vessel safety equipment)
Lifebuoys	10 nos.
Rigid life jackets	53 nos.
EEBD	12 units
Pyrotechnics	As per SOLAS
Stretcher	1 nos. SOLAS approved

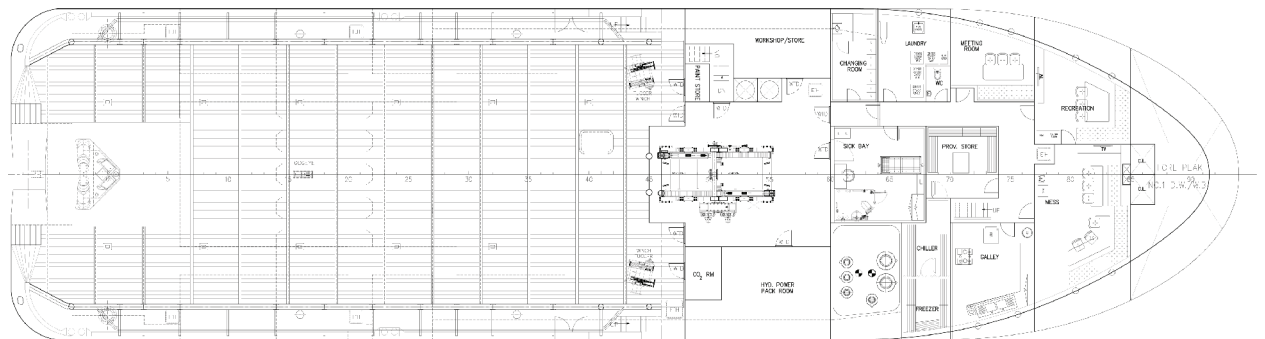
---

## Accommodation

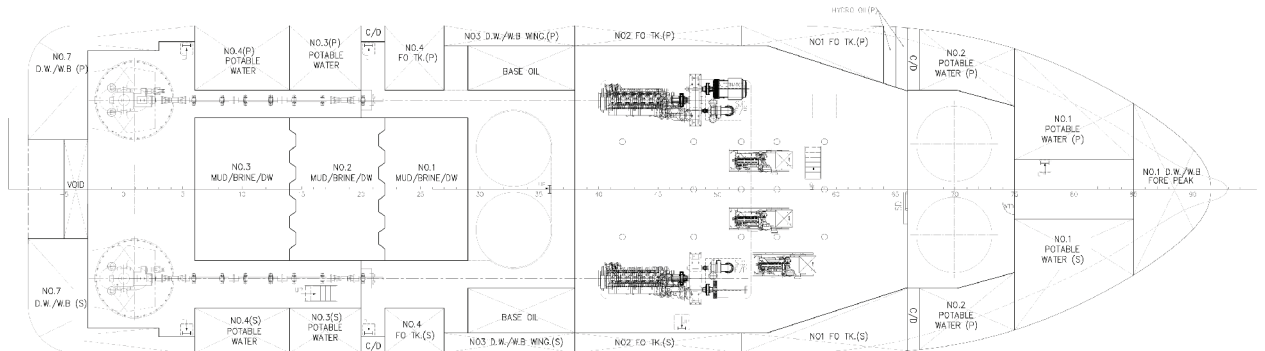
Lower Forecastle	04 x 2 Berth Cabins
	05 x 4 Berth Cabins
Upper Forecastle	04 x 1 Berth Cabin
	05 x 2 Berth Cabins
Total	42 men



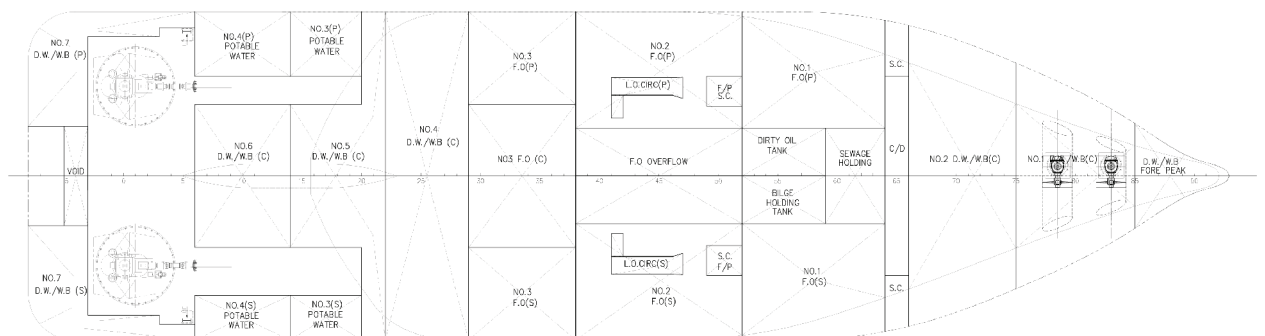
Outboard profile



Main deck

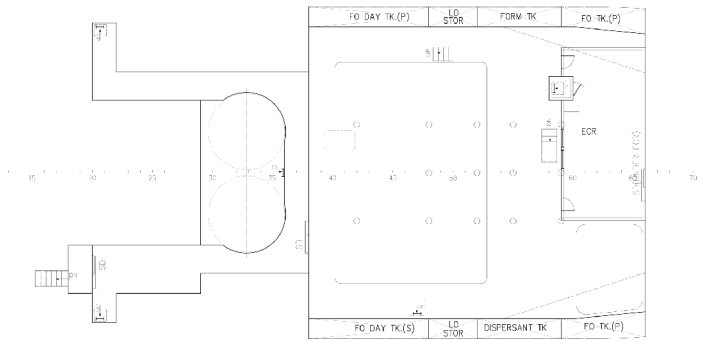


Below main deck and tween deck

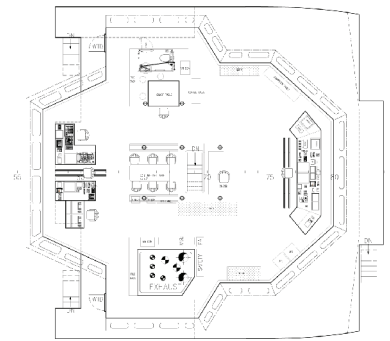


Bottom / Tank top

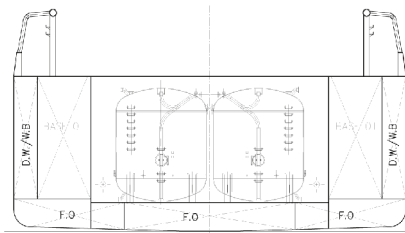
# GA Specifications



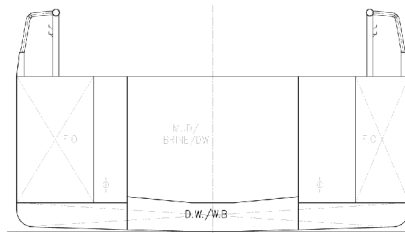
Tween deck



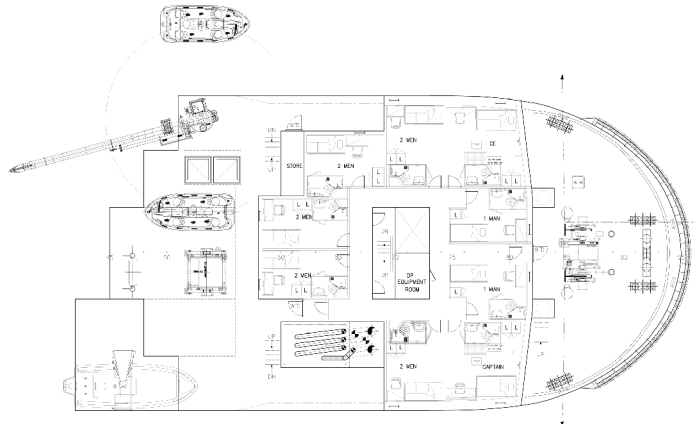
Nav bridge deck



Section at cement tank



Section at mud tank



Upper forecastle deck



Lower forecastle deck

## CONTACT

Commercial Department  
Topaz Energy and Marine  
Level 58, Almas Tower, Jumeirah Lakes Towers  
P.O. Box 282800, Dubai, UAE  
Tel +971 4 440 47 00  
Fax +971 4 440 47 99  
Email [marketing.topaz@topaz-marine.com](mailto:marketing.topaz@topaz-marine.com)

### TOPAZ MARINE MENA

Doha Marine Services WWL  
P.O. Box 37102, 4th Floor, Faisaliyah Building  
Suheim Bin Hamad Street, Al Saad Area  
Doha, State of Qatar  
Tel +974 4410 48 00  
Fax +974 4447 94 73  
Email [marketing.mena@topaz-marine.com](mailto:marketing.mena@topaz-marine.com)

Topaz Marine Saudi Arabia Co Ltd.  
P.O. Box 4905, Al Jarbou Tower, 9th Floor, Office 902  
Dhahran Street  
Al Khobar 31952, Kingdom of Saudi Arabia  
Tel +966 13 835 36 30  
Fax +966 13 833 41 58  
Email [saudi.arabia@topaz-marine.com](mailto:saudi.arabia@topaz-marine.com)

### TOPAZ MARINE AFRICA

Topaz Marine Angola  
138 Ilha do Cabo  
Avenida Murtala Mohammed  
Luanda, Angola  
Tel +244 222 7250 55  
Email [marketing.africa@topaz-marine.com](mailto:marketing.africa@topaz-marine.com)

Topaz Marine Nig Ltd  
3rd Floor, Atlantic House  
121 Louis Solomon Close, Ahmadu Bello Way,  
Victoria Island, Lagos  
Email [marketing.africa@topaz-marine.com](mailto:marketing.africa@topaz-marine.com)

Topaz Marine Africa (Dubai Office)  
Topaz Energy and Marine Limited  
Building 33, Oilfields Supply Centre, Jebel Ali Free Zone  
P.O. Box 261005, Dubai, UAE  
Tel +9714 883 29 29  
Fax +9714 883 29 59  
Email [topaz.marine@topaz-marine.com](mailto:topaz.marine@topaz-marine.com)

### TOPAZ MARINE CASPIAN

BUE Caspian Limited  
5th Floor, ISR Plaza Business Centre  
69 Nizami Street, Baku  
AZ1005 Azerbaijan  
Tel +994 124 97 87 67  
Fax +994 124 97 25 96  
Email [topazmarine.azn@topaz-marine.com](mailto:topazmarine.azn@topaz-marine.com)

BUE Kazakhstan Limited  
2nd Floor, Building 80, Micro Region 14  
P.O. Box 130000, Aktau  
Republic of Kazakhstan  
Tel +7 7292 42 82 72  
Fax +7 7292 42 82 77  
Email [tmkzh.aktauoffice@topaz-marine.com](mailto:tmkzh.aktauoffice@topaz-marine.com)

BUE Marine Turkmenistan Limited  
Bitarap Turkmenistan Shayoly 231,  
Oguzkent Hotel Business Centre,  
Office 401, Ashgabat, Turkmenistan  
Tel +993 12 44 99 38  
Fax +993 12 44 99 39  
Email [topazmarine.turk@topaz-marine.com](mailto:topazmarine.turk@topaz-marine.com)

Topaz Astrakhan Limited  
7, Turgeneva str, 2nd Floor  
Tel +7 8512 23 80 72  
Fax +7 8512 23 80 72  
Email [topaz.astr@topaz-marine.com](mailto:topaz.astr@topaz-marine.com)