

Topaz Karzakkan

59 M - 5150 BHP - DP 1 - AHTSV

Vessel Specifications



Vessel Specifications

Registration

| | |
|----------------------|--|
| Year built / Builder | 2011 / Fujian South East Shipyard, China |
| Flag | Marshall Islands |
| Class | +A1, Towing Vessel, AH, Fire Fighting Vessel Class 1, Offshore Support Vessel, E, +AMS, +DPS-1 |
| Managers | Topaz Marine MENA |

Dimensions

| | |
|--------------------|----------------------|
| Length overall | 59.25 m |
| Breadth moulded | 14.95 m |
| Depth moulded | 6.10 m |
| Draft moulded | 4.95 m |
| Deadweight | 1400 tonnes |
| Registered tonnage | GRT: 1678 / NRT: 503 |

Machinery

| | |
|------------------------|--|
| Main engines | 5150 bhp - 2 x 2575 bhp @ 1600 rpm Caterpillar 3516B HD |
| Propulsion | 2 x ZF KH-680, controllable pitch propellers in Kort Nozzle |
| Bow thrusters | 2 x Kawasaki KT-72B3, CPP type, driven by electric motor, 8 tonnes thrust each |
| Stern thruster | 1 x Jastram 90 F-FC controlled, FPP type, driven by electric motor, 400 kW / 6 tonnes thrust |
| Rudders | 2 x Kamome high performance streamline 'Trailing Flap' type (alike Beckker rudders) |
| Main generators | 2 x Caterpillar C18, 350 kW each, 415 V, 50 Hz, 3 Ph |
| Emergency generator | 1 x Caterpillar 65 kW, 415 V, 50 Hz, 3 Ph |
| Shaft generator | 2 x 800 kW, 415 V, 50 Hz, 3 Ph |
| Oily water separator | 1.0 m ³ / hr with 15 ppm alarm, make: Ocean Clean |
| Sewage treatment plant | Membrane type for 50 persons |

DP Equipment

DP Class-I, Kongsberg K Pos, reference systems: 2 x DGPS

Capacities

| | |
|---------------------------------|--|
| Fuel oil | 540 m ³ |
| Fresh water | 357 m ³ |
| Drill / Ballast water | 396 m ³ |
| Liquid mud | 380 m ³ |
| Bulk | 187 m ³ (4 x 1650 ft ³) |
| Foam and detergent | 13 m ³ each |
| Lubricant oil and hydraulic oil | 6.35 m ³ each |
| Clear deck area | 350 m ² |
| Deck cargo capacity | 500 mt @ 7.5 tonnes / m ² |

Performance

| | |
|---------------|-----------|
| Maximum speed | 13 knots |
| Service speed | 10 knots |
| Bollard pull | 70 tonnes |

Transfer rates

| | |
|-----------------|--|
| Fuel oil | 1 x 150 m ³ / hr @ 75 m head |
| Fresh water | 1 x 125 m ³ / hr @ 75 m head |
| Drill water | 1 x 100 m ³ / hr @ 75 m head |
| Liquid mud | 2 x 70 m ³ / hr @ 85 m head with recirculation system |
| Dry bulk | 60 tonnes / hr at 75 m head with 5.6 bar air pressure |
| Bilge / ballast | 2 x 75 m ³ / hr @ 40 m head |

Vessel Specifications

Deck crane

Port side Hydraulic telescopic crane, SWL: 3 tonnes; working radius: 9 m
Hoisting height: 25 m; hoisting speed: 0~14 m / min

Navigation and communication

| | |
|--------------------------------|-----------------------------------|
| Inmarsat - C (SSAS, LRIT) | Furuno - Felcom 15 |
| GMDSS | Furuno area A1 + A2 + A3 |
| X Band radar | 2 x Furuno - FAR 2117, FR-1510MK3 |
| GPS plotter | 1 x Furuno - GP 150 |
| ECDIS | 1 x P C Maritime |
| AIS | 1 x Furuno - FA 150 |
| Autopilot | 1 x Anschuetz - NP 60 |
| Navtex receiver | 1 x Furuno - NX 700A |
| Gyro compass | 1 x Anschuetz standard 22 |
| Magnetic compass | 1 x Cassens Plath |
| Communications: data/fax/phone | Fleet broadband 150 |
| MF / HF SSB radio | 1 x Furuno - FS 2570 |
| Echo sounder | 1 x Furuno - FE 700 |
| MF / HF transceiver | 1 x Furuno RC 1500 |
| 2 Way VHF radio | 3 x SRH-50 |
| SART | 2 x Mcurdo-S4 |
| Speed log | 1 x Furuno - DS-80 |
| Weather fax receiver | 1 x Furuno - FAX 408 |
| Anemometer | 1 x R M Young - 05106 |
| EPIRB | 1 x Mcurdo |

Towing / anchor handling / mooring

| | |
|------------------------------------|---|
| Anchor handling towing winch | 1 x Double drum waterfall type electro-hydraulic winch Make: Plimsoll, 150 tonnes line pull and 200 tonnes brake holding capacity |
| Upper & lower drum wire capacity | 1000 m (L) x 56 mm diameter SWR @ 10 Layers |
| Rated pull (1 st layer) | 150 tonnes @ 0~6 m / min (1 st speed), 75 tonnes @ 0~12 m / min (2 nd speed) 25 tonnes @ 0~36 m / min (3 rd speed) |
| Brake holding | 200 tonnes static @ 1 st layer |
| Stern roller | 1.6 m diameter x 4 m length, 200 MT SWL |
| Shark jaws | 1 set x SWL 200 tonnes hydraulic, make: Plimsoll (i) Wire size : 32 mm to 114 mm, (ii) Chain size: 38 mm to 114 mm |
| Towing pins | 1 set x 200 tonnes, make: Plimsoll |
| Tugger winch | 2 x 10 tonnes @ 15 m / min electro-hydraulic, make: Plimsoll Brake holding capacity: 15 tonnes static at 1 st layer |
| Rope reel for spare tow wire | 1 x electro-hydraulic, make: Plimsoll Drum capacity: 1000 m (length) x 56 mm (diameter) SWR @ 10 layers Rated pull: 5 tonnes x 30 m / min (1 st layer) |
| Anchor windlass | 1 x 6.1 t @ 10 m / min electro-hydraulic, make: Plimsoll |
| Anchor chain | 2 x 220 m x 36 mm diameter, Grade IIa stud link chain |
| Anchor | 2 x 1305 kg AC-14 high holding power |
| Capstan | 2 x 5 tonnes @ 15 m / min, electro-hydraulic, make: Plimsoll Brake holding capacity: 37.30 tonnes |

Firefighting and anti-pollution equipment

| | |
|-------------------------|--|
| FIFI System | FIFI class 1 with water curtain all round |
| Fire monitors - (water) | 1 x 1200 m ³ / hr @ 12 bar |
| - (water / foam) | 1 x 300 - 1200 m ³ / hr @ 12 bar |
| Fire pumps | 2 x 1650 m ³ / hr @ 12 bar, PTO from main engines |
| Dispersant system | 2 x spray booms on port and starboard side |

Vessel Specifications

Safety equipment

| | |
|---------------------------|---|
| Fast rescue craft | 1 x 15 men |
| Life rafts | 6 x 25 men inflatable type SOLAS approved |
| Rescue boat | 1 x 6 men |
| Life buoys | 8 sets, SOLAS approved |
| Life jackets | 60 sets, SOLAS approved |
| Fireman outfit | 4 complete sets |
| EEBD | 6 units + 1 training unit |
| Parachute distress signal | 12 units |

Accommodation (46 bunks)

| | |
|--------|-------------------------------|
| Berths | 2 x 1 berth cabin = 2 berths |
| | 4 x 2 berth cabin = 8 berths |
| | 9 x 4 berth cabin = 36 berths |
| | 1 x hospital |

All cabins fully air conditioned & c/w attached toilets

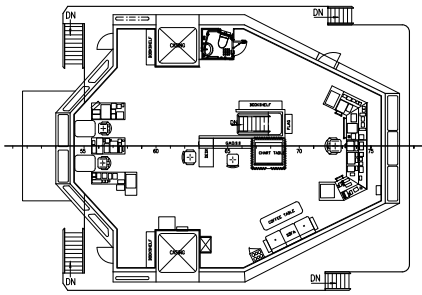
Last revision August 2016

Tank Capacities

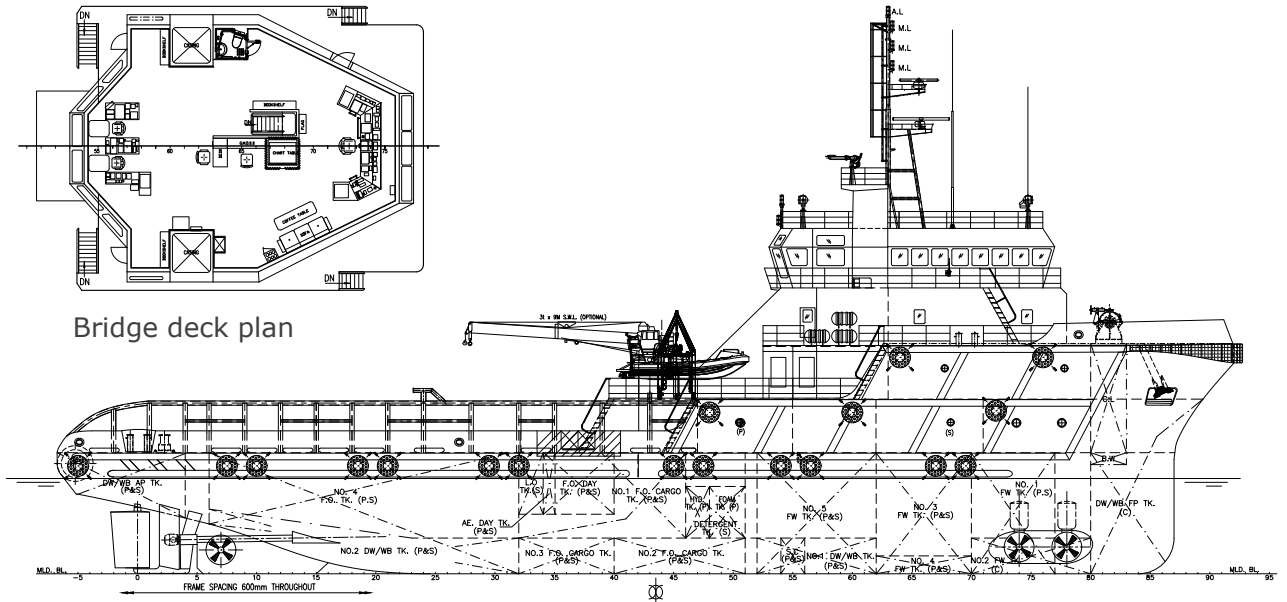
| | SG | Fuel oil | Pot water | Drill water | Ballast water | Liquid mud | Brine | Base oil | Glycol | Dry bulk | Oil recovery |
|--------------------------------|--------|------------|------------|-------------|---------------|------------|-------|----------|--------|------------|--------------|
| | M3 | 0,850 | 1,000 | 1,000 | 1,025 | 2,500 | 2,500 | 0,830 | 1,120 | 2,400 | 1,000 |
| D.W./W.B.F.P. tank © | 137.5 | | | 137.5 | | | | | | | |
| No. 1 D.W./W.B. DB tank (p) | 58.83 | | | 58.83 | | | | | | | |
| No. 1 D.W./W.B. DB tank (s) | 56.10 | | | 56.10 | | | | | | | |
| No. 2 D.W./W.B. DB tank (p) | 40.35 | | | 40.35 | | | | | | | |
| No. 2 D.W./W.B. DB tank (s) | 40.35 | | | 40.35 | | | | | | | |
| D.W./W.B.AP. tank (p) | 31.42 | | | 31.42 | | | | | | | |
| D.W./W.B.AP. tank (s) | 31.42 | | | 31.42 | | | | | | | |
| No. 1 F.W. wing tank (p) | 42.84 | | 42.84 | | | | | | | | |
| No. 1 F.W. wing tank (s) | 42.84 | | 42.84 | | | | | | | | |
| No. 2 F.W. tank (c) | 55.30 | | 55.30 | | | | | | | | |
| No. 3 F.W. DB tank (p) | 18.65 | | 18.65 | | | | | | | | |
| No. 3 F.W. DB tank (s) | 18.65 | | 18.65 | | | | | | | | |
| No. 4 F.W. wing tank (p) | 40.82 | | 40.82 | | | | | | | | |
| No. 4 F.W. wing tank (s) | 40.82 | | 40.82 | | | | | | | | |
| No. 5 F.W. wing tank (p) | 47.75 | | 47.75 | | | | | | | | |
| No. 5 F.W. wing tank (s) | 49.65 | | 49.65 | | | | | | | | |
| F.O. day tank (p) | 15.88 | 13.23 | | | | | | | | | |
| F.O. day tank (s) | 15.88 | 13.23 | | | | | | | | | |
| No. 1 F.O. wing tank (p) | 33.80 | 28.16 | | | | | | | | | |
| No. 1 F.O. DB tank (s) | 36.26 | 30.20 | | | | | | | | | |
| No. 2 F.O. DB tank (p) | 66.45 | 55.35 | | | | | | | | | |
| No. 2 F.O. DB tank (s) | 66.45 | 55.35 | | | | | | | | | |
| No. 3 F.O. DB tank (p) | 33.04 | 27.52 | | | | | | | | | |
| No. 3 F.O. DB tank (s) | 33.04 | 27.52 | | | | | | | | | |
| No. 4 F.O. wing tank (p) | 119.57 | 99.61 | | | | | | | | | |
| No. 4 F.O. wing tank (s) | 119.57 | 99.61 | | | | | | | | | |
| No. 1 Mud tank (p) | 81.40 | | | | | 203.51 | | | | | |
| No. 1 Mud tank (s) | 81.40 | | | | | 203.51 | | | | | |
| No. 2 Mud tank (p) | 108.72 | | | | | 271.81 | | | | | |
| No. 2 Mud tank (s) | 108.72 | | | | | 271.81 | | | | | |
| No. 1 Cement tank | 46.72 | | | | | | | | | 64.47 | |
| No. 2 Cement tank | 46.72 | | | | | | | | | 64.47 | |
| No. 3 Cement tank | 46.72 | | | | | | | | | 64.47 | |
| No. 4 Cement tank | 46.72 | | | | | | | | | 64.47 | |
| Bilge holding tank (p) | 6.50 | | | | | | | | | | |
| Dirty oil tank (s) | 6.50 | | | | | | | | | | |
| Foam tank (p) | 13.31 | | | | | | | | | | |
| Detergent tank (s) | 13.31 | | | | | | | | | | |
| Hydraulic oil tank (p) | 3.18 | | | | | | | | | | |
| Hydraulic oil tank (s) | 3.18 | | | | | | | | | | |
| Lube oil tank (s) | 6.35 | | | | | | | | | | |
| Weight in tonnes | | 450 | 357 | 396 | | 951 | | | | 258 | |
| Volume in m³ | | 540 | 357 | 396 | | 380 | | | | 187 | |

All figures shown are based on tank volume at 100% filing

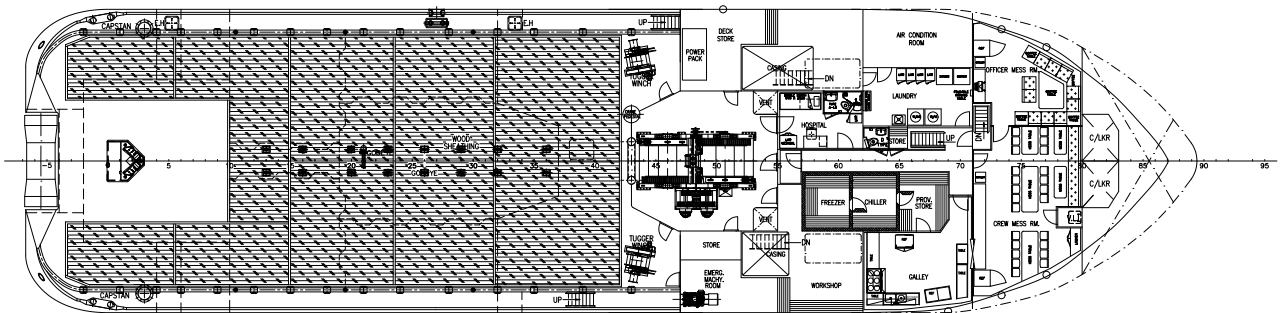
GA Specifications



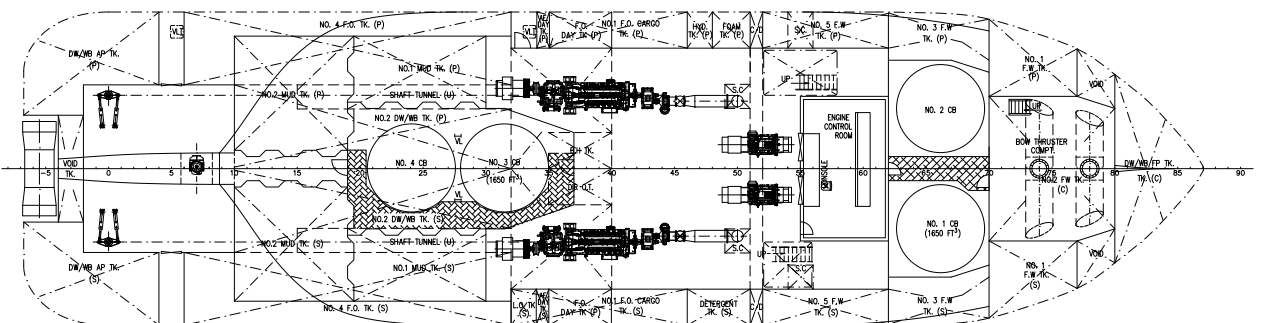
Bridge deck plan



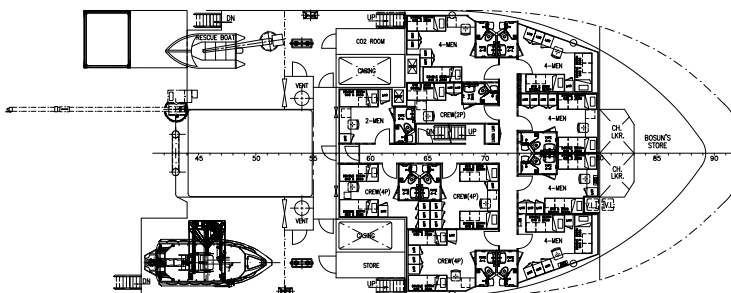
Outboard profile



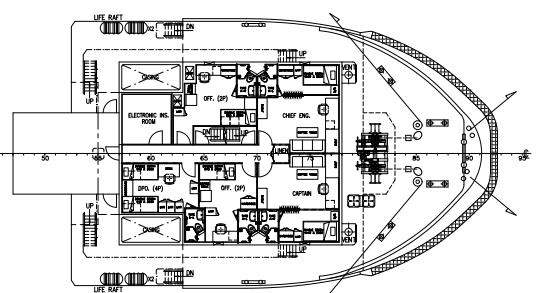
Main deck



Below deck



Forecastle deck



Upper forecastle deck

CONTACT

Commercial Department
Topaz Energy and Marine
Level 58, Almas Tower, Jumeirah Lakes Towers
P.O. Box 282800, Dubai, UAE
Tel +971 4 440 47 00
Fax +971 4 440 47 99
Email commercial.topaz@topazworld.com

TOPAZ MARINE CASPIAN
BUE Caspian Limited
5th Floor, ISR Plaza Business Centre
69 Nizami Street, Baku
AZ1005 Azerbaijan
Tel +994 124 97 87 67
Fax +994 124 97 25 96
Email commercial.caspian@topaz-marine.com

BUE Kazakhstan Limited
2nd Floor, Building 80, Micro Region 14
P.O. Box 130000, Aktau
Republic of Kazakhstan
Tel +7 7292 42 82 72
Fax +7 7292 42 82 77
Email commercial.caspian@topaz-marine.com

BUE Marine Turkmenistan Limited
Bitarap Turkmenistan Shayoly 231,
Oguzkent Hotel Business Centre,
Office 401, Ashgabat, Turkmenistan
Tel +993 12 44 99 38
Fax +993 12 44 99 39
Email commercial.caspian@topaz-marine.com

Topaz Astrakhan Limited
7, Turgeneva str, 2nd Floor
Tel +7 8512 23 80 72
Fax +7 8512 23 80 72
Email commercial.caspian@topaz-marine.com

TOPAZ MARINE MENA
Doha Marine Services WWL
P.O. Box 37102, 4th Floor, Faisaliyah Building
Suheim Bin Hamad Street, Al Saad Area
Doha, State of Qatar
Tel +974 4410 48 00
Fax +974 4447 94 73
Email commercial.mena@topaz-marine.com

Topaz Marine Saudi Arabia Co Ltd.
P.O. Box 4905, Al Jarbou Tower, 9th Floor,
Office 902
Dhahran Street
Al Khobar 31952, Kingdom of Saudi Arabia
Tel +966 13 835 36 30
Fax +966 13 833 41 58
Email commercial.mena@topaz-marine.com

TOPAZ MARINE AFRICA
Topaz Marine Angola
138 Ilha do Cabo
Avenida Murtala Mohammed
Luanda, Angola
Tel +244 222 7250 55
Email commercial.africa@topaz-marine.com

Topaz Marine Nigeria
3rd Floor, Atlantic House
121 Louis Solomon Close, Ahmadu Bello Way
Victoria Island, Lagos, Nigeria
Email commercial.africa@topaz-marine.com