

# Topaz Johor

59 M - 5150 BHP - DP1 – AHTSV

Vessel Specifications





# Vessel Specifications

## Registration

Year built / Builder	2010 / Fujian Funing Ship Building Co., Ltd
Flag	Marshall Islands
Class	ABS + A1E "Towing vessel, FiFi class 1, offshore support vessel" + AMS + DPS-1
Managers	Topaz Marine Mena

## Dimensions

Length overall	59.25 m
Breadth moulded	14.95 m
Depth moulded	6.10 m
Draft moulded	4.95 m
Deadweight	1390 t
Registered tonnage	Approximate GRT: 1678 / NRT: 503

## Machinery

Main engines	5150 bhp - 2 x 2575 bhp @ 1600 rpm Caterpillar 3516B HD
Propulsion	2 x Berg BCP 690 HDX-400, CPP in Kort Nozzles
Bow thrusters	1 x Kamome TCB-70DSMA, CPP type, electric motor driven, 6.2 tonnes thrust
Rudders	2 x Kamome high performance streamline 'Trailing Flap' type
Main generators	3 x Caterpillar C18, 350 kW each, 415 V, 50 Hz, 3 Ph
Emergency generator	1 x Caterpillar 65 kW, 415 V, 50 Hz, 3 Ph
Fresh water maker	1 x 5 tonnes / day, make: Peter Taboada
Oily water separator	1.0 m <sup>3</sup> / hr with 15 ppm alarm, make: Ocean Clean
Sewage treatment plant	1 x 50 person capacity, make: Jiangsu Nanji Machinery WCB-50

## DP Equipment

DP Class-I, Kongsberg K Pos, reference systems: 2 x DGPS

## Capacities

Fuel oil	540 m <sup>3</sup>
Fresh water	375 m <sup>3</sup>
Drill / Ballast water	396 m <sup>3</sup>
Liquid mud	411 m <sup>3</sup>
Bulk	187 m <sup>3</sup> (4 x 1650 ft <sup>3</sup> )
Foam and detergent	13 m <sup>3</sup> each
Lubricant oil and hydraulic oil	6.35 m <sup>3</sup> each
Clear deck area	340 m <sup>2</sup>
Deck cargo capacity	500 mt @ 7.5 tonnes / m <sup>2</sup>

## Performance

Maximum speed	13 knots
Service speed	10 knots
Bollard pull	61 t

## Navigation and communication equipment

Inmarsat - C	Furuno-Felcom 15
GMDSS	Furuno Area A1 + A2 + A3
X Band radar	2 x Furuno-FAR 2117, FR-1510MK3
GPS plotter	1 x Furuno-GP 150
ECDIS	1 x P C Maritime
AIS	1 x Furuno-FA-150
Autopilot	1 x Anschuetz-NP 60
Navtex receiver	1 x Furuno-NX 700B
Gyro compass	1 x Anschuetz Standard 22
Magnetic compass	1 x Cassens Plath
Communications: data / fax / phone	Fleet Broadband 150
MF / HF SSB radio	1 x Furuno-FS 2570
Echo sounder	1 x Furuno-FE 700
MF / HF transceiver	1 x Furuno-RC 1500
2 way VHF radio	3 x Mcurdo-R2
SART	2 x Mcurdo-S4
Speed log	1 x Furuno -DS-80
Weather facsimile receiver	1 x Furuno-FAX 408
Anemometer	1 x R M Young-05106
EPIRB	1 x Mcurdo-E5

# Vessel Specifications

## Transfer rates

Fuel oil	1 x 150 m <sup>3</sup> / hr @ 75 m head
Fresh water	1 x 125 m <sup>3</sup> / hr @ 75 m head
Drill water	1 x 100 m <sup>3</sup> / hr @ 75 m head
Liquid mud	2 x 70 m <sup>3</sup> / hr @ 75 m head
Liquid mud agitator	Electric driven mud agitator fitted in each mud tank
Dry bulk	60 tonnes / hr at 75 m head with 5.6 bar air pressure
Bilge / Ballast	2 x 75 m <sup>3</sup> / hr @ 40 m head

## Deck Crane

Port side	Hydraulic telescopic crane; SWL: 3 t, working radius: 9 m Hoisting height: 25 m; hoisting speed: 0~14 m / min
-----------	--

## Towing / anchor handling / mooring

Anchor handling towing winch	1 x Double drum waterfall type electro-hydraulic winch Make: Plimsoll, 150 tonnes line pull and 200 tonnes brake holding capacity
Upper and lower drum	1000 m (length) x 56 mm (diametre) SWR @ 10 layers
Rated pull (1st layer)	150 tonnes @ 0~6 m / min (1st speed), 75 tonnes @ 0~12 m / min (2nd speed) 25 tonnes @ 0~36 m / min (3rd speed)
Brake holding	200 tonnes static @ 1st layer
Stern roller	1.6 m (diametre) x 4.4 m (length), 200 MT SWL
Shark jaws	1 x set SWL 200 MT hydraulic, make: Plimsoll (i) Wire size : 32 mm to 114 mm, (ii) Chain size : 38 mm to 114 mm
Towing pins	1 x set 200 MT, make: Plimsoll
Tugger winch	2 x 10 tonnes @ 15 m / min electro-hydraulic Make: Plimsoll Brake holding capacity 15 tonnes static at 1st layer
Rope reel for spare tow wire	1 x electro-hydraulic, make: Plimsoll Drum capacity: 1000 m (length) x 56 mm (diametre) SWR @ 10 layers (Rated pull: 5 t x 30 m / min (1st layer)
Anchor windlass	1 x 6.1 t @ 10 m / min electro-hydraulic, make: Plimsoll
Anchor chain	2 x 220 m x 36 mm diametre, grade IIa stud link chain
Anchor	2 x 1305 kg AC-14 high holding power
Capstan	2 x 5 tonnes @ 15 m / min, electro-hydraulic, brake holding capacity - 37.30 tonnes, make: Plimsoll

## Fire fighting and anti-pollution equipment

FIFI system	FIFI class 1 with water curtain all round
Fire monitors - (water)	1 x 1200 m <sup>3</sup> / hr @ 12 bar
- (water / foam)	1 x 300 - 1200 m <sup>3</sup> / hr @ 12 bar -
Fire pumps	2 x 1650 m <sup>3</sup> / hr @ 12 bar, PTO from main engines
Foam / Dispersant system	2 x 1-1/4" NPT UOC-600 off-centre Flat Spray Veejet Nozzles 1 x PI-25 around the pump inductor

## Safety equipment

Life rafts	6 x 25 men inflatable type SOLAS approved
Rescue boat	1 x 6 men
Life bouys	8 sets, SOLAS approved
Life jackets	60 sets, SOLAS approved
Fireman outfit	4 complete sets
EEBD	6 units + 1 training unit
Parachute distress signal	12 units

## Accommodation (46 bunks)

Berths	2 x 1 berth cabin = 2 berths 6 x 2 berth cabin = 12 berths 8 x 4 berth cabin = 32 berths 1 x hospital
--------	--

All cabins fully air-conditioned & c/w attached toilets

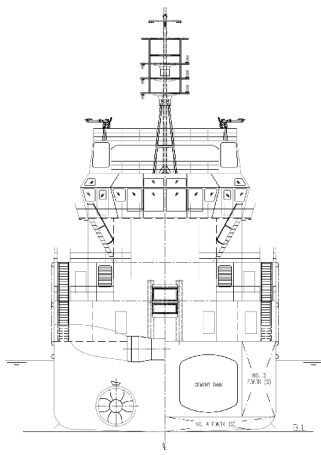
Last update Jul 2015

# Vessel Specifications

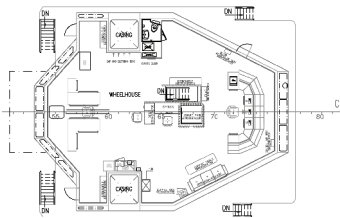
	SG	Fuel oil	Pot water	Drill water	Ballast water	Liquid mud	Brine	Base oil	Glycol	Dry bulk	Oil recovery
	M3	0,850	1,000	1,000	1,025	2,500	2,500	0,830	1,120	2,400	1,000
D.W/W.B.F.P. tank ©	137.5			137.5							
No. 1 D.W./W.B. DB tank (p)	58.80			58.80							
No. 1 D.W./W.B. DB tank (s)	56.60			56.60							
No. 2 D.W./W.B. DB tank (p)	40.20			40.20							
No. 2 D.W./W.B. DB tank (s)	40.20			40.20							
D.W/W.B.AP. tank (p)	31.50			31.50							
D.W/W.B.AP. tank (s)	31.50			31.50							
No. 1 F.W. wing tank (p)	44.40		44.40								
No. 1 F.W. wing tank (s)	44.40		44.40								
No. 2 F.W. DB tank (s)	69.84		69.84								
No. 3 F.W. wing tank (p)	40.82		40.82								
No. 3 F.W. wing tank (s)	40.82		40.82								
No. 4 F.W. DR. tank (p)	18.52		18.52								
No. 4 F.W. DR. tank (s)	18.65		18.65								
No. 5 F.W. wing tank (p)	47.75		47.75								
No. 5 Wing tank (s)	49.65		49.65								
F.O. day tank (p)	15.88	13.23									
F.O. day tank (s)	15.88	13.23									
No. 1 F.O. wing tank (p)	33.80	28.16									
No. 1 F.O. DB tank (s)	36.26	30.20									
No. 2 F.O. DB tank (p)	66.45	55.35									
No. 2 F.O. DB tank (s)	66.45	55.35									
No. 3 F.O. DB tank (p)	33.04	27.52									
No. 3 F.O. DB tank (s)	33.04	27.52									
No. 4 F.O. wing tank (p)	119.57	99.61									
No. 4 F.O. wing tank (s)	119.57	99.61									
No. 1 Mud tank (p)	99.10					247.00					
No. 2 Mud tank (s)	99.10					247.00					
No. 2 Mud tank (p)	107.80					269.00					
No. 2 Mud tank (s)	107.80					269.00					
No. 1 Cement tank	46.72									64.47	
No. 2 Cement tank	46.72									64.47	
No. 3 Cement tank	46.72									64.47	
No. 4 Cement tank	46.72									64.47	
Dirty oil tank (s)	6.50										
Foam tank (p)	13.31										
Detergent tank (s)	13.31										
Hydraulic oil tank (p)	3.18										
Hydraulic oil tank (s)	3.18										
Lube oil tank (s)	6.35										
Bilge holding tank (p)	6.50										
<b>Weight in tonnes</b>		<b>450</b>	<b>375</b>	<b>396</b>		<b>1032</b>				<b>258</b>	
<b>Volume in m<sup>3</sup></b>		<b>540</b>	<b>375</b>	<b>396</b>		<b>411</b>				<b>187</b>	
<b>Volume (dry bulk in ft<sup>3</sup>)</b>											

All figures shown are based on tank volume at 100% filling

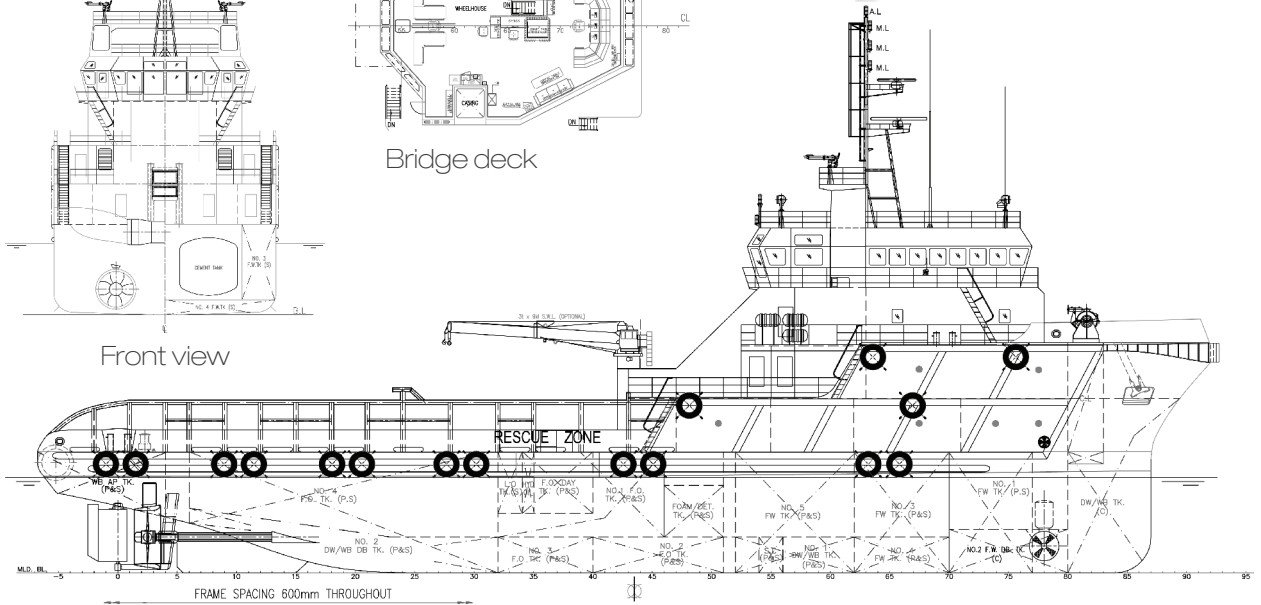
# GA Specifications



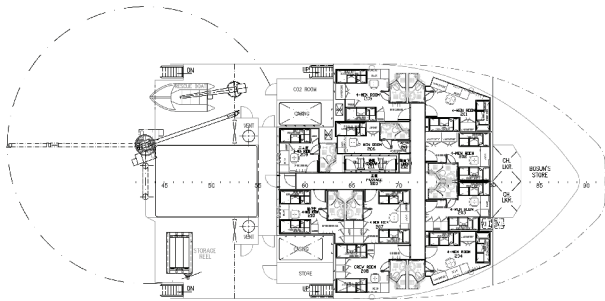
Front view



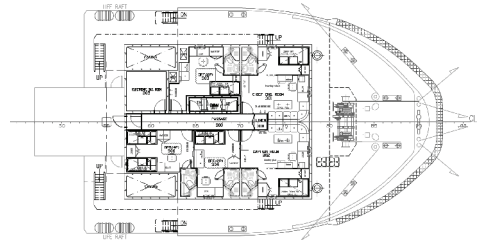
Bridge deck



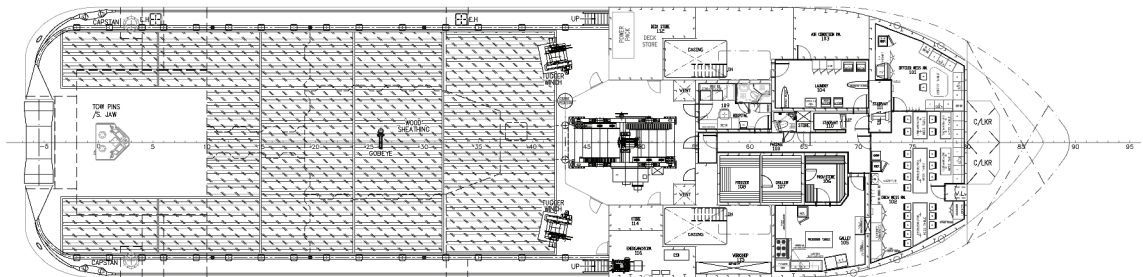
Outboard profile



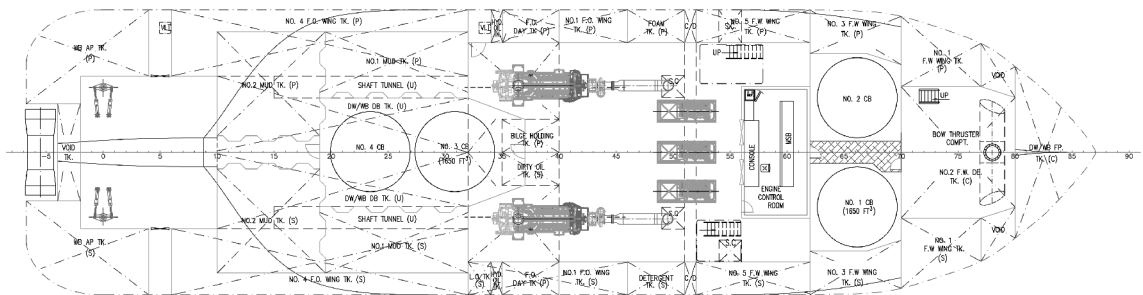
Forecastle deck



Upper forecastle deck



Main deck



Below deck

## CONTACT

Commercial Department  
Topaz Energy and Marine  
Level 58, Almas Tower, Jumeirah Lakes Towers  
P.O. Box 282800, Dubai, UAE  
Tel +971 4 440 47 00  
Fax +971 4 440 47 99  
Email [marketing.topaz@topaz-marine.com](mailto:marketing.topaz@topaz-marine.com)

## TOPAZ MARINE CASPIAN

BUE Caspian Ltd.  
3<sup>rd</sup> Floor, Gurban Khalilov Street 3  
Baku AZ1006 Azerbaijan  
Tel +994 124 97 87 87  
Fax +994 124 97 25 96  
Email [topazmarine.azn@topaz-marine.com](mailto:topazmarine.azn@topaz-marine.com)

Topaz Marine Kazakhstan  
BUE Kazakhstan Limited  
2<sup>nd</sup> Floor, Building 80, Micro Region 14  
P.O. Box 130000, Aktau, Republic of Kazakhstan  
Tel +7 7292 42 82 72  
Fax +7 7292 42 82 77  
Email [tmkzh.aktauoffice@topaz-marine.com](mailto:tmkzh.aktauoffice@topaz-marine.com)

Topaz Asktrakhan Limited  
7, Turgeneva srt, 2<sup>nd</sup> Floor  
Astrakhan, Russia  
Tel +7 8512 23 80 72  
Fax +7 8512 23 80 72  
Email [topaz.astr@topaz-marine.com](mailto:topaz.astr@topaz-marine.com)

## TOPAZ MARINE GLOBAL

Nico Middle East Ltd.  
P.O. Box 261005, Building 33, Oilfields Supply Centre  
Jebel Ali Free Zone, Dubai, UAE  
Tel +971 4 883 29 29  
Fax +971 4 883 29 59  
Email [marketing.global@topaz-marine.com](mailto:marketing.global@topaz-marine.com)

## TOPAZ MARINE MENA

Doha Marine Services WWL  
P.O. Box 37102, 4<sup>th</sup> Floor, Faisaliyah Building,  
Suhaim Bin Hamad Street, Al Sadd Area  
Doha, State of Qatar  
Tel +974 4410 48 00  
Fax +974 4447 94 73  
Email [marketing.mena@topaz-marine.com](mailto:marketing.mena@topaz-marine.com)

Topaz Marine Saudi Arabia Co. Ltd.  
Office 902, 9<sup>th</sup> Floor, Al Jarbou Tower, Dharan Street  
P.O. Box 4905, Al Khobar 31952  
Kingdom of Saudi Arabia  
Tel +966 13 835 36 30  
Fax +966 13 833 41 58  
Email [saudi.arabia@topaz-marine.com](mailto:saudi.arabia@topaz-marine.com)