

Topaz Jebel Ali

59 M – 5150 BHP – FiFi 1 – DP 1 – AHTSV

Vessel Specifications



Vessel Specifications

Registration

Year built / Builder	2008 / Fujian South East Shipyard, China
Flag / Port of registry	Marshall Islands / Majuro
Class	ABS +A1, Towing Vessel, Fire Fighting Vessel Class 1, Offshore Support Vessel AH, Oil Recovery Vessel 2, E, +AMS, +DPS-1
Managers	Topaz Marine

Dimensions

Length Overall	59.25 m
Breadth Moulded	14.95 m
Depth Moulded	6.10 m
Draft Loaded	4.95 m
Deadweight	1372 mt
Registered Tonnage	GRT 1678 Tons / NRT 503 Tons

Machinery

Main Engines	5150 BHP - 2 x 2575 BHP @ 1600 rpm Caterpillar 3516B
Propellers	2 x ZF CPP in Kort Nozzles, Dia-2.625 M
Bow Thrusters	1 x Kawasaki KT-55B1, CPP Tunnel Thruster, 6 tonnes thrust
Main Generators	3 x Caterpillar 3408 DITA Engine, 315 kw each, 415 V, 50 Hz, 3 Ph
Emergency generators	1 x Caterpillar C4.4, 52 KW, 415 V, 50 Hz, 3 Ph *
Oily Water Separator	1.0 m ³ / hr with 15 ppm alarm, make: Ocean Clean
Sewage Treatment Plant	1 x 30 person capacity, make: Jiangsu Nanji Machinery WCB-30

DP Equipment

DP system	DP class 1, KPOS DP 11
References	2 x 9205 DGPS 1 x Cyscan MK4

Capacities

Fuel Oil	536 m ³
Fresh Water	370 m ³
Drill/ Ballast water	395 m ³
Liquid Mud	419 m ³
Bulk	187 m ³
Foam and detergent	13 m ³ each
Clear Deck Area	350 m ²
Deck Cargo capacity	500 tons @ 7.5 tonnes / m ²

Performance

Maximum Speed	13 knots
Service Speed	10 knots
Bollard Pull	65 tons

Transfer rates

Fuel Oil	1 x 150 m ³ / hr @ 75 m head
Fresh Water	2 x 125 m ³ / hr @ 75 m head
Drill Water	2 x 100 m ³ / hr @ 75 m head
Liquid Mud	2 x 75 m ³ / hr @ 75 m head, 2 x electrical driven agitators
Dry bulk	60 tonnes / hr @ 75 m head

Deck Crane

Port Side	Hydraulic Telescopic Crane: SWL: 3 t, working radius: 9 m Hoisting height: 25 m, hoisting speed: 0~14 m / min
-----------	--

Vessel Specifications

Navigation and Communication

Inmarsat C	Furuno Felcom-15
GMDSS	1 x Furuno, A3
Radars	2 x Furuno - FR-2115, FR 1510
GPS	1 x Furuno - GP 150
ECDIS	1 x P C Maritime
AIS	1 x Furuno-FA-150
Autopilot	1 x Nautopilot NP 60
Navtex Receiver	1 x Furuno - NX 700B
Gyro Compass	1 x Master Gyro Compass c/w two repeaters and azimuth circle
Magnetic Compass	1 x Cassens Plath
SSB radio	1 x Furuno FS 2570
Echo Sounder	1 x Furuno - FE 700
VHF radio	2 x Furuno - FM8800D / 8800S
SART	2 x Mcurdo - KLS-S4-1
Speed log	1 x Furuno DS 80
Weather facsimile receiver	1 x Furuno Fax-408
Anemometer	1 x Ohn Lilley & Gille - P 247
EPIRB	1 x Mcurdo E5

Towing / anchor handling / mooring

Anchor handling towing winch	1 x Double drum waterfall type electro-hydraulic winch Make: Plimsoll, 150 tonnes line pull and 200 tonnes brake holding capacity, SLP monitored by CCTV Cameras
Upper and lower drum	1000 m (length) x 56 mm (diameter) SWR 10 layers
Rated pull (1 st layer)	150 tonnes @ 0~06 m / min (1 st speed) 75 tonnes @ 0~12 m / min (2 nd speed) 25 tonnes @ 0~36 m / min (3 rd speed)
Brake holding	200 tonnes static @ 1 st layer
Stern roller	1.6 m (diameter) x 4.4 m (length), 200 MT SWL
Shark jaws	1 x set SWL 200 MT hydraulic, make: Plimsoll
Towing pins	1 x set 200 MT, make: Plimsoll
Tugger winch	2 x 10 tonnes @ 15 m / min electro-hydraulic, Make: Plimsoll, brake holding capacity 15 tonnes static at 1 st layer
Rope reel for spare tow wire	1 x electro-hydraulic, make: Plimsoll Drum capacity: 1000 m (length) x 56 mm (diameter) SWR 10 layers
Anchor windlass	1 x 6.1 tonnes @ 10 m / min electro-hydraulic, make: Plimsoll
Anchor chain	2 x 220 m x 36 mm diameter, grade Iia stud link chain
Anchor	2 x 1350 kg Stockless WMAC 14
Capstan	2 x 5 tonnes @ 15 m / min electro hydraulic, make: Plimsoll

Fire Fighting equipment and anti-pollution equipment

FIFI system	FIFI Class 1 with water curtain all round
FIFI monitors (Water)	2 x 1200 m ³ / hr @ 12 bar, remote Joystick controlled from bridge
FIFI pumps	2 x 1650 m ³ / hr @ 12 bar
Dispersant system	2 x 6 mtr spray boom on port and starboard side

Safety equipment

Life rafts	6 x 15 men
Rescue boat	1 x 6 men with outboard engine
Life bouys	8 sets, SOLAS approved
Life jackets	60 sets, SOLAS approved
Fire Man outfit	06 sets
EEBD	11 Units
Parachute distress signal	12 Units

Vessel Specifications

Accomodation (46 bunks)

Berths	2 x 1 man = 2 men
	4 x 2 men = 8 men
	9 x 4 men = 36 men

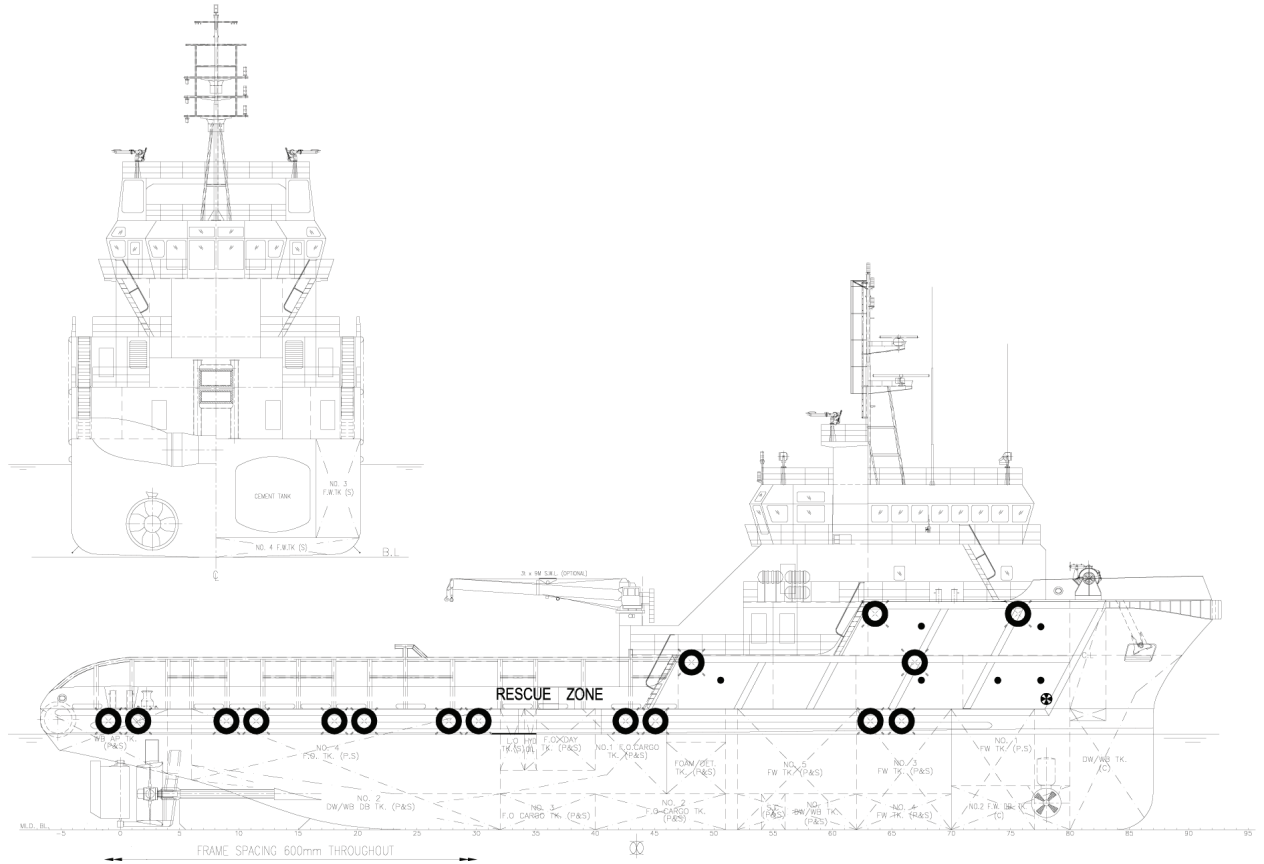
All cabins fully air-conditioned & c/w attached toilets.

Last revision November 2015

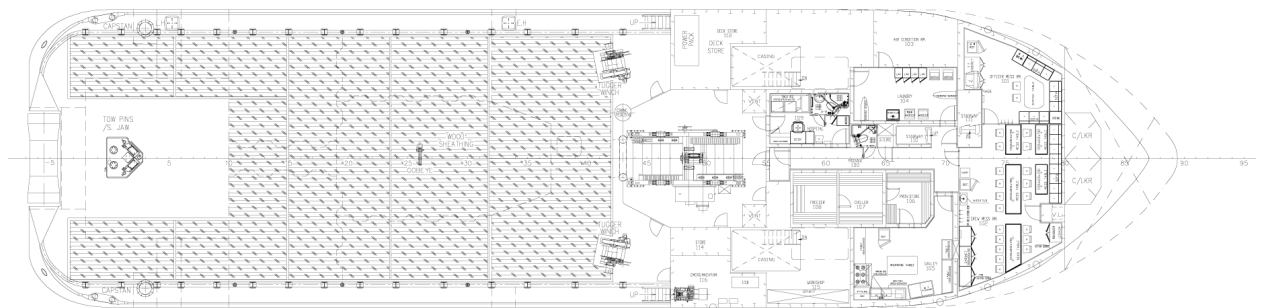
Tank Capacities

	SG	Fuel oil	Pot water	Drill water	Ballast water	Liquid mud	Brine M3	Base oil	Methanol	Dry bulk	Oil recovery
	M3	0,850	1,000	1,000	1,025	2,500	2,500	0,830	1,120	2,400	1,000
NO.1 F.W. WING (P)	44.37		44.37								
NO.1 F.W. WING TK (S)	44.37		44.37								
NO.2 F.W. DB TK (C)	67.05		67.05								
NO.3 F.W. WING TK (P)	40.82		40.82								
NO.3 F.W. WING TK (S)	40.82		40.82								
NO.4 F.W. DB (P)	18.65		18.65								
NO.4 F.W. DB (S)	18.65		18.65								
NO.5 F.W. WING TK (P)	47.75		47.75								
NO.5 F.W. WING TK (S)	47.75		47.75								
DW / WB FP TK (C)	137.48				137.48						
DW / WB AFT TK (P)	31.46				31.46						
DW / WB AFT TK (S)	31.46				31.46						
NO.1 DW / WB DB TK (P)	58.83				58.83						
NO.1 DW / WB DB TK (S)	55.95				55.95						
NO.2 DW / WB DB TK (P)	40.35				40.35						
NO.2 DW / WB DB TK (S)	40.35				40.35						
FUEL OIL TK											
F.O. DAY TK (P)	15.88	13.23									
F.O. DAY TK (S)	15.88	13.23									
NO.1 F.O. WING TK (P)	33.8	28.16									
NO.1 F.O. WING TK (S)	36.26	30.20									
NO.2 F.O. DB TK (P)	66.49	55.39									
NO.2 F.O. DB TK (S)	66.49	55.39									
NO.3 F.O. DB TK (P)	31.35	26.21									
NO.3 F.O. DB TK (S)	31.35	26.21									
NO.4 F.O. WING TK (P)	119.57	99.6									
NO.4 F.O. WING TK (S)	119.57	99.6									
OTHER TANKS											
BILGE HOLDING TK (P)	6.5										5.85
DIRTY OIL TK (S)	6.5										5.85
FOAM TK (P)	13.31										13.31
DETERGENT TK (S)	13.31										13.31
HYD OIL TK (P)	3.18										2.94
HYD OIL TK (S)	3.18										2.94
LUBE OIL TK (S)	6.35										5.87
MUD TANKS											
NO.1 MUD TK (P)	99.89					249.73					
NO.1 MUD TK (S)	99.89					249.73					
NO.2 MUD TK (P)	109.82					274.56					
NO.2 MUD TK (S)	109.82					274.56					
CEMENT TANKS											
NO.1 CEMENT TK	46.72									64.47	
NO.2 CEMENT TK	46.72									64.47	
NO.3 CEMENT TK	46.72									64.47	
NO.4 CEMENT TK	46.72									64.47	
Weight in Tons		417	370		395	1049				258	50.70
Volume in m³		536	370		395	419				187	52.33

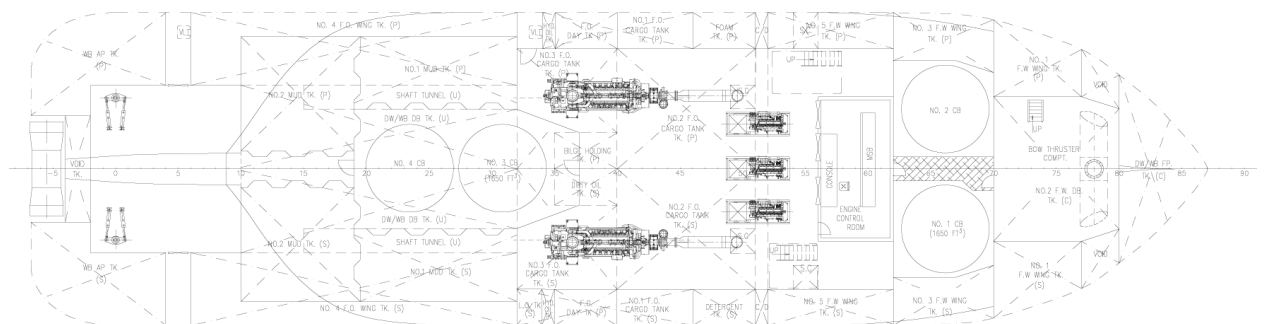
GA Specifications



Outboard profile

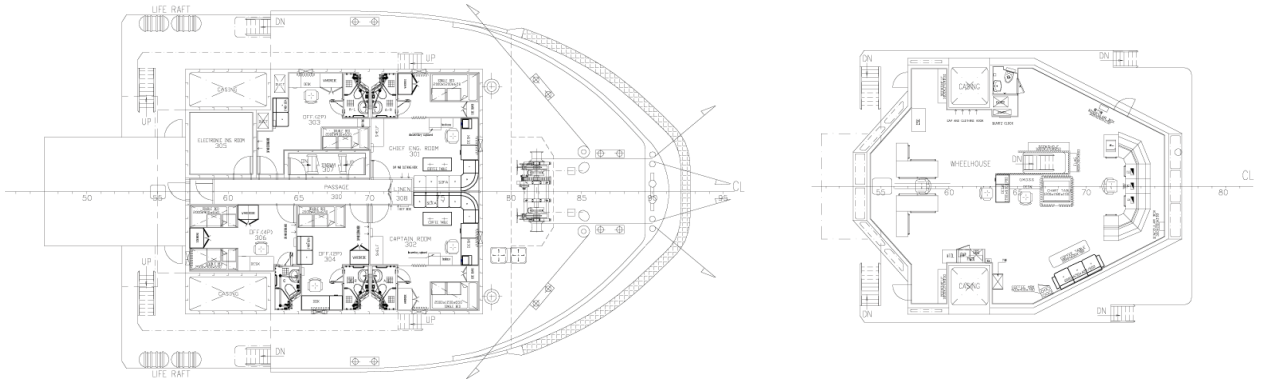


Main deck

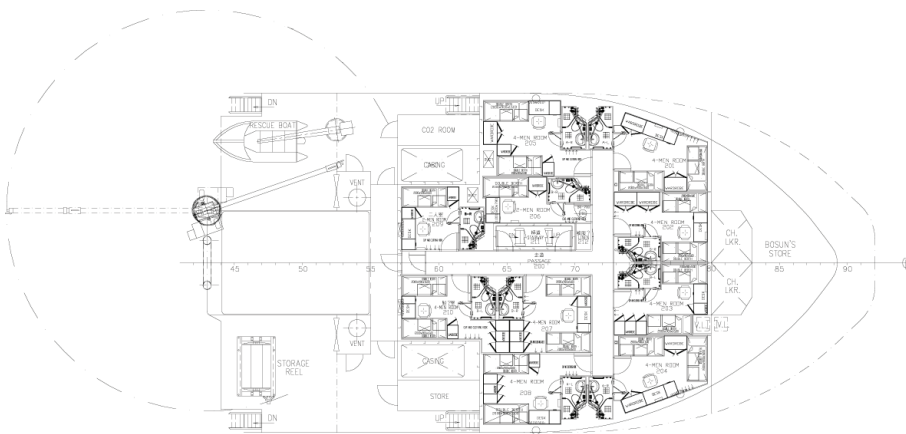


Below deck

GA Specifications



Upper forecastle deck



Forecastle deck

CONTACT

Commercial Department
Topaz Energy and Marine
Level 58, Almas Tower, Jumeirah Lakes Towers
P.O. Box 282800, Dubai, UAE
Tel +971 4 440 47 00
Fax +971 4 440 47 99
Email commercial.topaz@topazworld.com

TOPAZ MARINE CASPIAN
BUE Caspian Limited
5th Floor, ISR Plaza Business Centre
69 Nizami Street, Baku
AZ1005 Azerbaijan
Tel +994 124 97 87 67
Fax +994 124 97 25 96
Email commercial.caspian@topaz-marine.com

BUE Kazakhstan Limited
2nd Floor, Building 80, Micro Region 14
P.O. Box 130000, Aktau
Republic of Kazakhstan
Tel +7 7292 42 82 72
Fax +7 7292 42 82 77
Email commercial.caspian@topaz-marine.com

BUE Marine Turkmenistan Limited
Bitarap Turkmenistan Shayoly 231,
Oguzkent Hotel Business Centre,
Office 401, Ashgabat, Turkmenistan
Tel +993 12 44 99 38
Fax +993 12 44 99 39
Email commercial.caspian@topaz-marine.com

Topaz Astrakhan Limited
7, Turgeneva str, 2nd Floor
Tel +7 8512 23 80 72
Fax +7 8512 23 80 72
Email commercial.caspian@topaz-marine.com

TOPAZ MARINE MENA
Doha Marine Services WWL
P.O. Box 37102, 4th Floor, Faisaliyah Building
Suheim Bin Hamad Street, Al Saad Area
Doha, State of Qatar
Tel +974 4410 48 00
Fax +974 4447 94 73
Email commercial.mena@topaz-marine.com

Topaz Marine Saudi Arabia Co Ltd.
P.O. Box 4905, Al Jarbou Tower, 9th Floor,
Office 902
Dhahran Street
Al Khobar 31952, Kingdom of Saudi Arabia
Tel +966 13 835 36 30
Fax +966 13 833 41 58
Email commercial.mena@topaz-marine.com

TOPAZ MARINE AFRICA
Topaz Marine Angola
138 Ilha do Cabo
Avenida Murtala Mohammed
Luanda, Angola
Tel +244 222 7250 55
Email commercial.africa@topaz-marine.com

Topaz Marine Nigeria
3rd Floor, Atlantic House
121 Louis Solomon Close, Ahmadu Bello Way
Victoria Island, Lagos, Nigeria
Email commercial.africa@topaz-marine.com