

Topaz Jafiliya

59 M - 5150 BHP - FiFi 1 - AHTSV

Vessel Specifications

TOPAZ
MARINE



Vessel Specifications

Registration

| | |
|----------------------|---|
| Year built / Builder | 2008 / Fujian South East Shipyard, China |
| Flag | Marshall Islands |
| Class | ABS + A1, Towing vessel, AH, Fire Fighting class 1, OSV, E, + AMS |
| Managers | Topaz Marine |

Dimensions

| | |
|--------------------|------------------------------|
| Length overall | 59.25 m |
| Breadth moulded | 14.95 m |
| Depth moulded | 6.10 m |
| Draft loaded | 4.95 m |
| Deadweight | 1400 mt |
| Registered tonnage | GRT 1678 tons / NRT 503 tons |

Machinery

| | |
|------------------------|--|
| Main engines | 5150 BHP - 2 x 2575 BHP @ 1600 rpm Caterpillar 3516B |
| Propellers | 2 x ZF CPP in Kort Nozzles, Dia-2.625 M |
| Bow thrusters | 1 x Kawasaki KT-55B1, CPP Tunnel Thruster, 6 tonnes thrust |
| Main generators | 3 x Caterpillar C18, 350 kw each, 415 V, 50 Hz, 3 Ph |
| Emergency generators | 1 x Caterpillar C4.4, 65 kw, 415 V, 50 Hz, 3 Ph |
| Fresh water maker | 1 x 5 tonnes / day, make: Sea Recovery |
| Oily water separator | 1.0 m ³ / hr with 15 ppm alarm, make: Ocean Clean |
| Sewage treatment plant | 1 x 30 person capacity, make: Jiangsu Nanji Machinery WCB-30 |

Deck Crane

| | |
|-----------|--|
| Port Side | Hydraulic Telescopic Crane: SWL: 3 t, working radius: 9 m Hoisting height: 25 m, hoisting speed: 0~14 m / min |
|-----------|--|

Capacities

| | |
|-----------------------|--|
| Fuel oil | 536 m ³ |
| Fresh water | 370 m ³ |
| Drill / ballast water | 395 m ³ |
| Liquid mud | 419 m ³ |
| Bulk | 187 m ³ |
| Chiller / freezer | 10 m ³ each |
| Foam and detergent | 13 m ³ each |
| Clear deck area | 350 m ² |
| Deck cargo capacity | 500 tons @ 7.5 tonnes / m ² |

Performance

| | |
|---------------|----------|
| Maximum speed | 13 knots |
| Service speed | 10 knots |
| Bollard pull | 65 tons |

Transfer rates

| | |
|-------------|---|
| Fuel oil | 1 x 150 m ³ per hr @ 75 m head |
| Fresh water | 2 x 125 m ³ per hr @ 75 m head |
| Drill water | 2 x 100 m ³ per hr @ 75 m head |
| Liquid mud | 2 x 75 m ³ per hr @ 75 m head |
| Dry bulk | 60 tonnes per hr @ 50 m head |

Vessel Specifications

Navigation and communication

| | |
|----------------------------|--|
| Inmarsat C | Furuno Felcom-15 |
| GMDSS | 1 x Furuno, A3 |
| Radars | 2 x Furuno - FR-2115, FR 1510 |
| GPS | 1 x Furuno - GP 150 |
| ECDIS | 1 x P C Maritime |
| AIS | 1 x Furuno-FA-150 |
| Autopilot | 1 x Nautopilot NP 60 |
| Navtex Receiver | 1 x Furuno - NX 700B |
| Gyro compass | 1 x Master Gyro Compass c/w two repeaters and azimuth circle |
| Magnetic compass | 1 x Cassens Plath |
| SSB radio | 1 x Furuno FS 2570 |
| Echo sounder | 1 x Furuno - FE 700 |
| VHF radio | 2 x Furuno - FM8800D / 8800S |
| SART | 2 x Mcurdo - KLS-S4-1 |
| Speed log | 1 x Furuno DS 80 |
| Weather facsimile receiver | 1 x Furuno Fax-408 |
| Anemometer | 1 x Ohn Lilley & Gille - P 247 |
| EPIRB | 1 x Mcurdo E5 |
| VSAT system | 1 x Astra |

Towing / anchor handling / mooring

| | |
|------------------------------|--|
| Anchor handling towing winch | 1 x Double drum waterfall type electro-hydraulic winch Make: Plimsoll, 150 tonnes line pull and 200 tonnes brake holding capacity, SLP monitored by CCTV Cameras |
| Upper and lower drum | 1000 m (length) x 56 mm (diameter) SWR 10 layers |
| Rated pull (1st layer) | 150 tonnes @ 0~06 m per min (1st speed) 75 tonnes @ 0~12 m per min (2nd speed) 25 tonnes @ 0~36 m per min (3rd speed) |
| Brake holding | 200 tonnes static @ 1st layer |
| Stern roller | 1.6 m (diameter) x 4.4 m (length), 200 MT SWL |
| Shark jaws | 1 x set SWL 200 MT hydraulic, make: Plimsoll |
| Towing pins | 1 x set 200 MT, make: Plimsoll |
| Tugger winch | 2 x 10 tonnes @ 15 m / min electro-hydraulic, Make: Plimsoll, brake holding capacity 15 tonnes static at 1st layer |
| Rope reel for spare tow wire | 1 x electro-hydraulic, make: Plimsoll Drum capacity: 1000 m (length) x 56 mm (diameter) SWR 10 layers |
| Anchor windlass | 1 x 6.1 tonnes @ 10 m / min electro-hydraulic, make: Plimsoll |
| Anchor chain | 2 x 220 m x 36 mm diameter, grade Iia stud link chain |
| Anchor | 2 x 1350 kg Stockless WMAC 14 |
| Capstan | 2 x 5 tonnes @ 15 m / min electro hydraulic, make: Plimsoll |

Fire fighting equipment and anti-pollution equipment

| | |
|-----------------------|---|
| FiFi system | FiFi Class 1 with water curtain all round |
| FiFi monitors (water) | 2 x 1200 m ³ per hr @ 12 bar, remote Joystick controlled from bridge |
| FiFi pumps | 2 x 1650 m ³ per hr @ 12 bar |
| Dispersant system | 2 x 6 mtr spray boom on port and starboard side |

Vessel Specifications

Safety equipment

| | |
|---------------------------|--------------------------------|
| Life rafts | 6 x 15 men |
| Rescue boat | 1 x 6 men with outboard engine |
| Life bouys | 8 sets, SOLAS approved |
| Life jackets | 60 sets, SOLAS approved |
| Fireman outfit | 6 sets |
| EEBD | 11 Units |
| Parachute distress signal | 12 Units |

Accomodation (46 bunks)

| | |
|--------|--------------------|
| Berths | 2 x 1 man = 2 men |
| | 4 x 2 men = 8 men |
| | 9 x 4 men = 36 men |

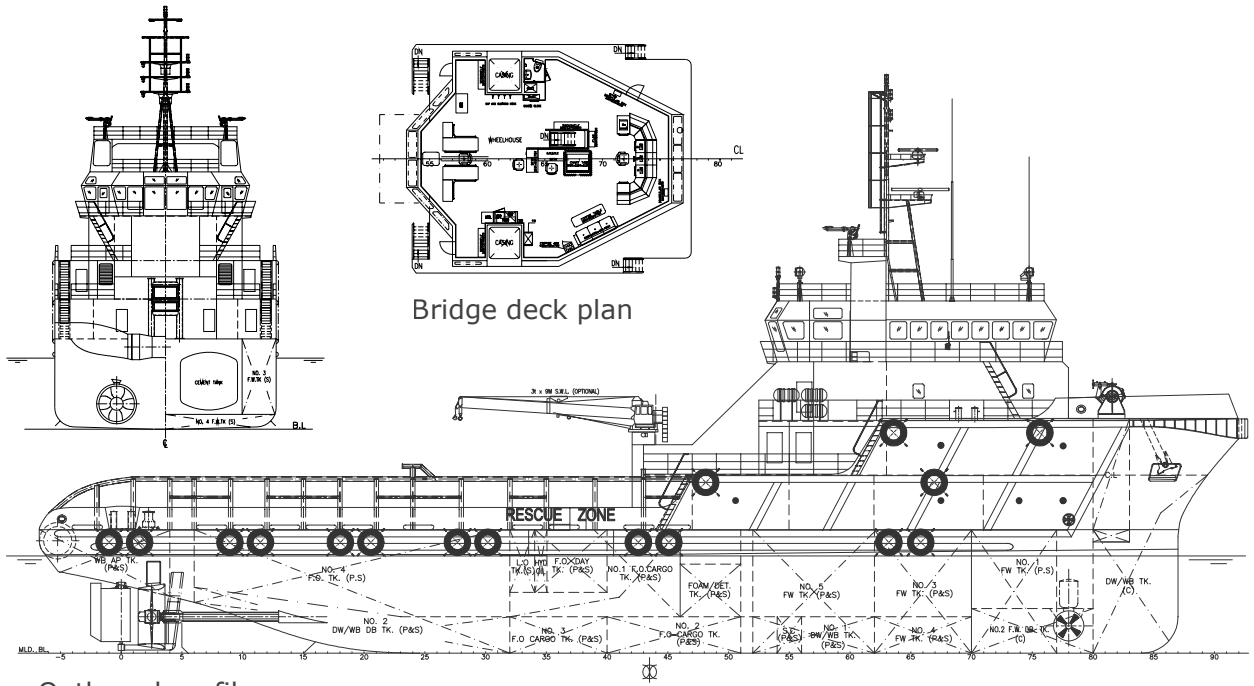
All cabins fully air-conditioned & c/w attached toilets.

Last revision August 2016

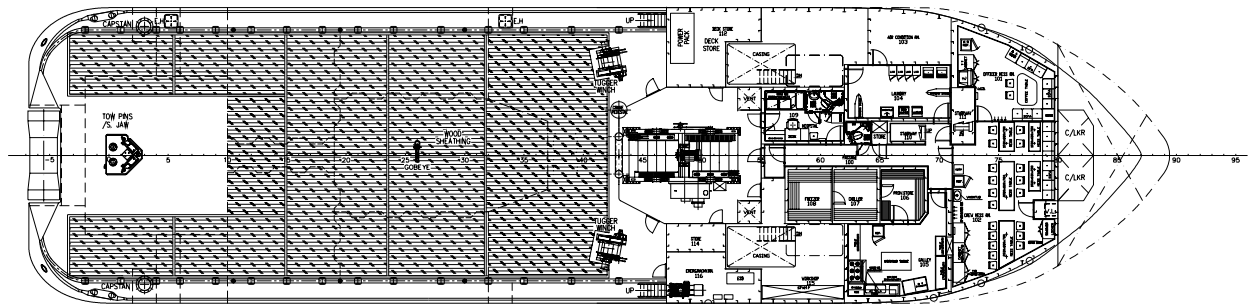
Tank Capacities

| | SG | Fuel oil | Pot water | Drill water | Ballast water | Liquid mud | Brine M3 | Base oil | Methanol | Dry bulk | Oil recovery |
|--------------------------------|--------|------------|------------|-------------|---------------|-------------|----------|----------|----------|------------|--------------|
| | M3 | 0,850 | 1,000 | 1,000 | 1,025 | 2,500 | 2,500 | 0,830 | 1,120 | 2,400 | 1,000 |
| NO.1 F.W. WING (P) | 44.37 | | 44.37 | | | | | | | | |
| NO.1 F.W. WING TK (S) | 44.37 | | 44.37 | | | | | | | | |
| NO.2 F.W. DB TK (C) | 67.05 | | 67.05 | | | | | | | | |
| NO.3 F.W. WING TK (P) | 40.82 | | 40.82 | | | | | | | | |
| NO.3 F.W. WING TK (S) | 40.82 | | 40.82 | | | | | | | | |
| NO.4 F.W. DB (P) | 18.65 | | 18.65 | | | | | | | | |
| NO.4 F.W. DB (S) | 18.65 | | 18.65 | | | | | | | | |
| NO.5 F.W. WING TK (P) | 47.75 | | 47.75 | | | | | | | | |
| NO.5 F.W. WING TK (S) | 47.75 | | 47.75 | | | | | | | | |
| DW / WB FP TK (C) | 137.48 | | | | 137.48 | | | | | | |
| DW / WB AFT TK (P) | 31.46 | | | | 31.46 | | | | | | |
| DW / WB AFT TK (S) | 31.46 | | | | 31.46 | | | | | | |
| NO.1 DW / WB DB TK (P) | 58.83 | | | | 58.83 | | | | | | |
| NO.1 DW / WB DB TK (S) | 55.95 | | | | 55.95 | | | | | | |
| NO.2 DW / WB DB TK (P) | 40.35 | | | | 40.35 | | | | | | |
| NO.2 DW / WB DB TK (S) | 40.35 | | | | 40.35 | | | | | | |
| FUEL OIL TK | | | | | | | | | | | |
| F.O. DAY TK (P) | 15.88 | 13.23 | | | | | | | | | |
| F.O. DAY TK (S) | 15.88 | 13.23 | | | | | | | | | |
| NO.1 F.O. WING TK (P) | 33.8 | 28.16 | | | | | | | | | |
| NO.1 F.O. WING TK (S) | 36.26 | 30.20 | | | | | | | | | |
| NO.2 F.O. DB TK (P) | 66.49 | 55.39 | | | | | | | | | |
| NO.2 F.O. DB TK (S) | 66.49 | 55.39 | | | | | | | | | |
| NO.3 F.O. DB TK (P) | 31.35 | 26.21 | | | | | | | | | |
| NO.3 F.O. DB TK (S) | 31.35 | 26.21 | | | | | | | | | |
| NO.4 F.O. WING TK (P) | 119.57 | 99.6 | | | | | | | | | |
| NO.4 F.O. WING TK (S) | 119.57 | 99.6 | | | | | | | | | |
| OTHER TANKS | | | | | | | | | | | |
| BILGE HOLDING TK (P) | 6.5 | | | | | | | | | | 5.85 |
| DIRTY OIL TK (S) | 6.5 | | | | | | | | | | 5.85 |
| FOAM TK (P) | 13.31 | | | | | | | | | | 13.31 |
| DETERGENT TK (S) | 13.31 | | | | | | | | | | 13.31 |
| HYD OIL TK (P) | 3.18 | | | | | | | | | | 2.94 |
| HYD OIL TK (S) | 3.18 | | | | | | | | | | 2.94 |
| LUBE OIL TK (S) | 6.35 | | | | | | | | | | 5.87 |
| MUD TANKS | | | | | | | | | | | |
| NO.1 MUD TK (P) | 99.89 | | | | | 249.73 | | | | | |
| NO.1 MUD TK (S) | 99.89 | | | | | 249.73 | | | | | |
| NO.2 MUD TK (P) | 109.82 | | | | | 274.56 | | | | | |
| NO.2 MUD TK (S) | 109.82 | | | | | 274.56 | | | | | |
| CEMENT TANKS | | | | | | | | | | | |
| NO.1 CEMENT TK | 46.72 | | | | | | | | | 64.47 | |
| NO.2 CEMENT TK | 46.72 | | | | | | | | | 64.47 | |
| NO.3 CEMENT TK | 46.72 | | | | | | | | | 64.47 | |
| NO.4 CEMENT TK | 46.72 | | | | | | | | | 64.47 | |
| Weight in Tons | | 417 | 370 | | 395 | 1049 | | | | 258 | 50.70 |
| Volume in m³ | | 536 | 370 | | 395 | 419 | | | | 187 | 52.33 |

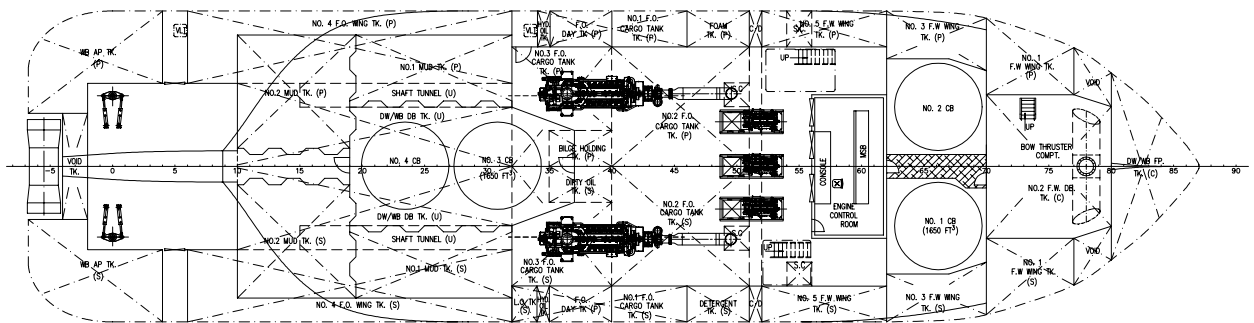
GA Specifications



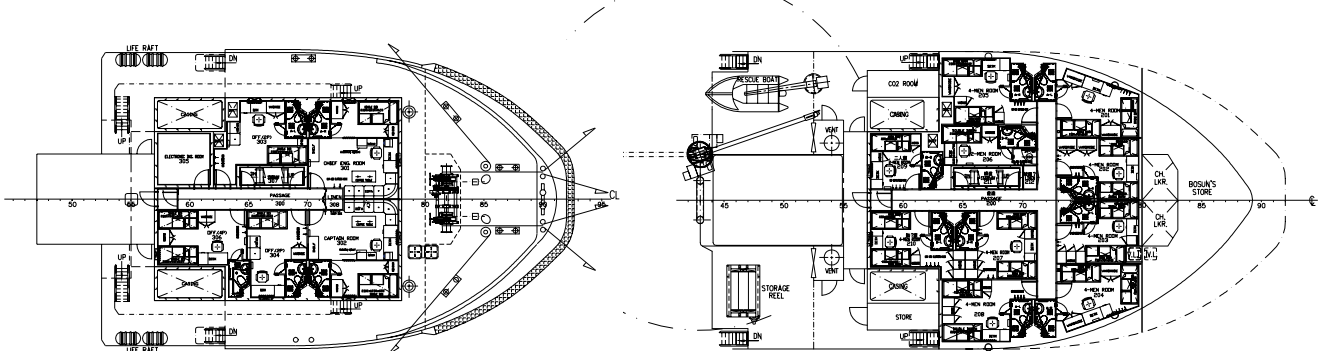
Outboard profile



Main deck



Below deck



Upper forecastle deck

Forecastle deck

Photos



CONTACT

Commercial Department
Topaz Energy and Marine
Level 58, Almas Tower, Jumeirah Lakes Towers
P.O. Box 282800, Dubai, UAE
Tel +971 4 440 47 00
Fax +971 4 440 47 99
Email commercial.topaz@topazworld.com

TOPAZ MARINE CASPIAN
BUE Caspian Limited
5th Floor, ISR Plaza Business Centre
69 Nizami Street, Baku
AZ1005 Azerbaijan
Tel +994 124 97 87 67
Fax +994 124 97 25 96
Email commercial.caspian@topaz-marine.com

BUE Kazakhstan Limited
2nd Floor, Building 80, Micro Region 14
P.O. Box 130000, Aktau
Republic of Kazakhstan
Tel +7 7292 42 82 72
Fax +7 7292 42 82 77
Email commercial.caspian@topaz-marine.com

BUE Marine Turkmenistan Limited
Bitarap Turkmenistan Shayoly 231,
Oguzkent Hotel Business Centre,
Office 401, Ashgabat, Turkmenistan
Tel +993 12 44 99 38
Fax +993 12 44 99 39
Email commercial.caspian@topaz-marine.com

Topaz Astrakhan Limited
7, Turgeneva str, 2nd Floor
Tel +7 8512 23 80 72
Fax +7 8512 23 80 72
Email commercial.caspian@topaz-marine.com

TOPAZ MARINE MENA
Doha Marine Services WWL
P.O. Box 37102, 4th Floor, Faisaliyah Building
Suheim Bin Hamad Street, Al Saad Area
Doha, State of Qatar
Tel +974 4410 48 00
Fax +974 4447 94 73
Email commercial.mena@topaz-marine.com

Topaz Marine Saudi Arabia Co Ltd.
P.O. Box 4905, Al Jarbou Tower, 9th Floor,
Office 902
Dhahran Street
Al Khobar 31952, Kingdom of Saudi Arabia
Tel +966 13 835 36 30
Fax +966 13 833 41 58
Email commercial.mena@topaz-marine.com

TOPAZ MARINE AFRICA
Topaz Marine Angola
138 Ilha do Cabo
Avenida Murtala Mohammed
Luanda, Angola
Tel +244 222 7250 55
Email commercial.africa@topaz-marine.com

Topaz Marine Nigeria
3rd Floor, Atlantic House
121 Louis Solomon Close, Ahmadu Bello Way
Victoria Island, Lagos, Nigeria
Email commercial.africa@topaz-marine.com