

# Topaz Daughter Class

Amani / Faye / Isra / Megan / Seema / Sophie / Xara  
75 M – 3,300 DWT – Platform Supply Vessel



## Vessel Specifications



# Vessel Specifications

## Registration

Year built / Builder	2013, Fujian Southeast Shipyard / Xiamen Shipbuilding Industry Company Limited
Class	ABS * A1 (E) Offshore Support Vessel, Fire Fighting Vessel Class 1, HNLS, OSR-C, * AMS, ACCU, DPS-2, SPS notation

## Dimensions

Length overall	75 m
Length waterline	72.88 m
Length between perpendicular	67.85 m
Breadth moulded	17.25 m
Depth moulded	8 m
Draft designed	6.5 m
Deadweight	3300 t approx @ max draft
Registered tonnage	GRT 2950 t / NRT 885 t

## Machinery

Main engine	2 x Niigata 8L28HX3000HP @ 750 RPM
Propulsion	2 x FPP (Schottel / Niigata)
Bow thrusters	2 x 10 t thruster, approx 600 kw, FPP (Kawasaki Wuhan)
Steering gear	Niigata Z-peller
Main generators	3 x CAT 450 kw diesel-driven, 415 v / 3p h / 50 hz
Shaft generators	2 x 1000 kw, 415 v / 3ph / 50 hz (Leroy Somer / Seimens)
Emergency generator	1 x CAT 80 kw diesel-driven
Rudders	Z-peller
Rudder propellers	1 x Niigata azimuth rudder propeller with fixed pitch
DP Equipment	DP2 system Kongsberg / Alstom / MT Nautronix

## Capacities

Fuel oil	700 m <sup>3</sup> approx
Fresh water	560 m <sup>3</sup> approx
Drill water / SWB	1600 m <sup>3</sup> approx
Dirty oil	10 m <sup>3</sup> approx
Bulk cement	Total about 226 three cement tanks each of 2200 ft <sup>3</sup> and one of 1795 ft <sup>3</sup>
Foam	12 m <sup>3</sup> approx
Detergent	12 m <sup>3</sup> approx
Lub oil	10 m <sup>3</sup> approx
Sewage holding tank	15 m <sup>3</sup> approx
Bilge holding	10 m <sup>3</sup> approx
Methanol	150 m <sup>3</sup> approx
Mud / Brine / Rec oil	740 m <sup>3</sup> approx
Oily water separator	1 x 1 m <sup>3</sup> per hour
Water maker	2 x 10 t per day
Sewage treatment plant	1 x 50 men per day
Deck area	700 m <sup>2</sup> minimum
Deck cargo	1200 t
Deck strength	5.5 t per m <sup>2</sup> uniform loading

## Performance

Maximum speed	13 knots
Economical speed	10 knots
Endurance	28 days approx.
Range	About 8500 nautical miles at 12 knots

# Vessel Specifications

## Discharge rates

Bilge pump	60 m <sup>3</sup> per hour @ 50 m
Ballast pump	80 m <sup>3</sup> per hour @ 70 m
Sludge oil pump	5 m <sup>3</sup> per hour @ 29 m
Lubricating oil pump	2 nos. for stand by
Fuel oil transfer pump	2 x 20 m <sup>3</sup> per hour @ 20 m
Mud pump for liquid mud	2 x 75 m <sup>3</sup> per hour @ 90 m
Fuel oil cargo pump	2 x 150 m <sup>3</sup> per hour @ 80 m
Methanol system	75 m <sup>3</sup> per hour @ 90 m
Drill water pump	1 x 100 m <sup>3</sup> per hour @ 80 m
Fresh water cargo pump	1 x 100 m <sup>3</sup> per hour @ 85 m
Fire pumps	2 x 1790 m <sup>3</sup> per hour @ 12 bar

---

## Deck equipment

Anchor windlass	1 x 13 t @ 18 m per min for 46 mm chain, electro hydraulic (Plimsoll / Mentrade)
Bow anchors	2 x 1980 kg Stockless Bower Anchor
Chains	2 x 467.5 m (length) x 46 mm (diametre), Grade U2
Capstans	2 x 10 t @ 25 m per min, electro hydraulic (Plimsoll / Mentrade)
Tugger winch	2 x 10 t @ 24 m per min, electro hydraulic (Plimsoll / Mentrade) drum capacity 250 m x 19 & 22 mm diameter
Deck crane	1 x 7.5 t @ 10 m

---

## Navigation and communication

Inmarsat C	1 x Furuno Felcom-15
GMDSS	A1, A2 & A3 / RC-1800T / Furuno
Radars	2 x Furuno FAR 2117 and FAR 2137
DGPS	1 x Furuno GP-150
AIS	1 x JRC / Furuno
Autopilot	1 x Anschutz / BST:1975
Navtex receiver	1 x Furuno NX-700B
Gyro compass	3 x Anschutz / BST:2217
Magnetic compass	1 x SCH105 / Lilley & Gillie
Telephone	Fitted, self-powered
PA system	Fitted
Echo sounder	1 x Furuno FE-700
VHF radios	2 x Furuno / FM8800
Portable VHF radios	3 x McMurdo R2
SART	2 x McMurdo RT9
Speed log	1 x Furuno DS-80
Weather fax	1 x Furuno
Wind indicator	1 x JRC / Furuno
EPIRB	1 x McMurdo E5
Joystick	1 x Kongsberg / Alstom / MT Nautronix

---

## Life saving equipment

Life rafts	6 x 25 men, SOLAS standard
Life jackets (w/ lights)	73 x SOLAS approved
Life buoys	8
Immersion suits	As per SOLAS standards
Pyrotechnics	1 x line throwing apparatus 12 x parachute distress rockets 2 x orange smokes 2 x self igniting ights
Rescue boat	1 x 6 men
First aid kit	1 x 25 men

# Vessel Specifications

## Fire-fighting equipment

### External

FiFi system	Class 1 with water curtain all around
Fire pump	2 x 1790 m <sup>3</sup> per hour @ 12 bar each
Monitors	2 x fire monitors 1200 m <sup>3</sup> per hour each
Fireman's outfit	4 sets
Oil dispersant system	2 x cluster nozzles or overhang system

### Internal

Emergency fire pump	1 x 35 m <sup>3</sup> per hour x 50 m head
BA recharging compressor	1 x 200 litres per min @ 200 bar
CO <sub>2</sub> system in engine room	
Fire detection and alarm in living spaces and engine room.	

---

## Accommodation

Crew	14 x 1-berth cabins = 14
	17 x 2-berth cabins = 34
Total	48

All cabins are fully air-conditioned and c/w attached washroom.

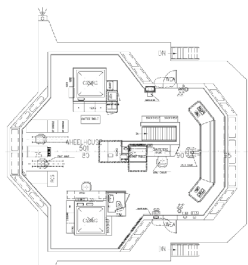
Last revision August 2017

# Tank Capacities

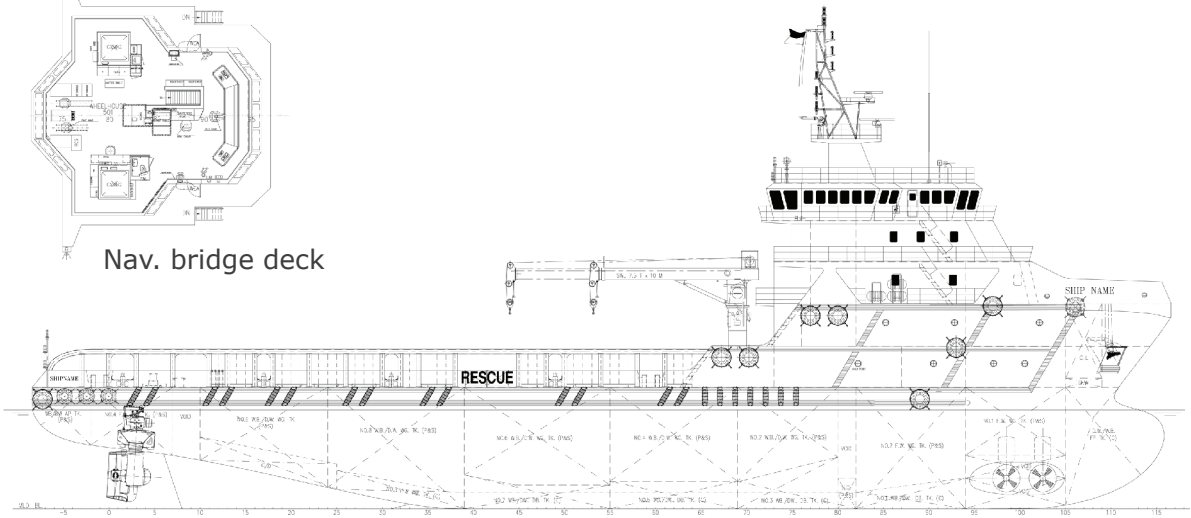
	SG	Fuel oil	Pot water	Drill water	Ballast water	Liquid mud	Brine	Base oil	Glycol	Dry bulk	Oil recovery
	M <sup>3</sup>	0.850	1.000	1.000	1.025	2.500	2.500	0.830	1.120	2.400	1.000
D.W/W.B.F.P. tank ©	93.3			93.3	95.63						
No. 1 D.W./W.B. DB tank (c)	83.4			83.4	85.49						
No. 2 D.W./W.B. WG tank (p)	55.7			55.7	57.09						
No. 2 D.W./W.B. WG tank (s)	55.7			55.7	57.09						
No. 3 WB/DW DB TK (c)	112.1			112.1	114.90						
No. 4 WB/DW WG TK (p)	72.8			72.8	74.62						
No. 4 WB/DW WG TK (s)	72.8			72.8	74.62						
No. 5 WB/DW DB TK (c)	135.3			135.3	138.68						
No. 6 WB/DW WG TK (p)	65.9			65.9	67.55						
No. 6 WB/DW WG TK (s)	65.9			65.9	67.55						
No. 7 WB/DW DB TK (c)	175.8			175.8	180.20						
No. 8 WB/DW WG TK (p)	113.5			113.5	116.34						
No. 8 WB/DW WG TK (s)	113.5			113.5	116.34						
No. 9 WB/DW WG TK (p)	73.6			73.6	75.44						
No. 9 WB/DW WG TK (s)	73.6			73.6	75.44						
D.W/W.B.AP. tank (p)	41.1			41.1	42.13						
D.W/W.B.AP. tank (s)	41.1			41.1	42.13						
D.W/W.B.AP. tank (c)	80			80	82.00						
No. 1 F.W. wing tank (p)	59.7		59.70								
No. 1 F.W. wing tank (s)	59.7		59.70								
No. 2 F.W. tank (p)	134.6		134.60								
No. 2 F.W. tank (s)	134.6		134.60								
No. 3 F.W. DB tank (c)	65.9		65.90								
No. 4 F.W. wing tank (p)	46.0		46.00								
No. 4 F.W. wing tank (s)	46.0		46.00								
F.O. day tank (p)	24.3	20.66									
F.O. day tank (s)	24.3	20.66									
No. 1 F.O. wing tank (c)	171.7	145.95									
No. 2 F.O. DB tank (p)	86.8	73.78									
No. 2 F.O. DB tank (s)	86.8	73.78									
No. 3 F.O. DB tank (p)	36.9	31.365									
No. 3 F.O. DB tank (s)	36.9	31.365									
No. 4 F.O. wing tank (p)	29.2	24.82									
No. 4 F.O. wing tank (s)	29.2	24.82									
No. 5 F.O. tank (p)	112.5	95.625									
No. 5 F.O. tank (s)	112.5	95.625									
Over Flow TK (c)	14.6										
No. 1 Mud/Brine/ RO TK (p)	142.4					356.00	356.00				142.40
No. 1 Mud/Brine/ RO TK (s)	142.4					356.00	356.00				142.40
No. 2 Mud/Brine/ RO TK (p)	127.6					319.00	319.00				127.60
No. 2 Mud/Brine/ RO TK (s)	127.6					319.00	319.00				127.60
No. 3 Mud/Brine/ RO TK (p)	99.7					249.25	249.25				99.70
No. 3 Mud/Brine/ RO TK (s)	99.7					249.25	249.25				99.70
No. 1 Cement tank (c)	59.4										
No. 2 Cement tank (c)	59.4										
No. 3 Cement tank (c)	59.4										
No. 4 Cement tank (c)	49.5										
Bilge holding tank (s)	16.4										
Dirty oil tank (p)	16.4										
Foam tank (p)	12.7										
Detergent tank (s)	12.7										
Hydraulic oil tank (p)	7.0										
Lube oil tank (s)	12.9										
Lube oil tank (p)	5.9										
Sewage Holding TK (s)	14.9										
Methanol TK (c)	147.9										
<b>Weight in tonnes</b>		<b>638.44</b>	<b>546.50</b>	<b>1525.1</b>	<b>1563.23</b>	<b>1848.50</b>	<b>1848.50</b>				<b>739.40</b>
<b>Volume in m<sup>3</sup></b>		<b>751.1</b>	<b>546.5</b>	<b>1525.1</b>	<b>1525.1</b>	<b>739.4</b>	<b>739.4</b>				<b>739.4</b>

All figures shown are based on tank volume at 100% capacity

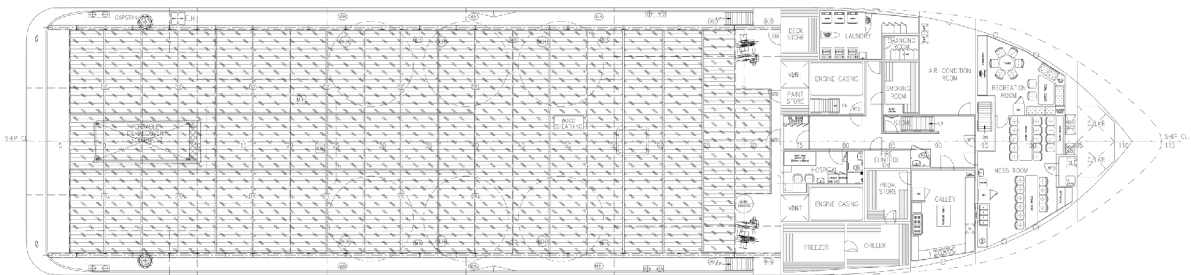
# GA Specifications



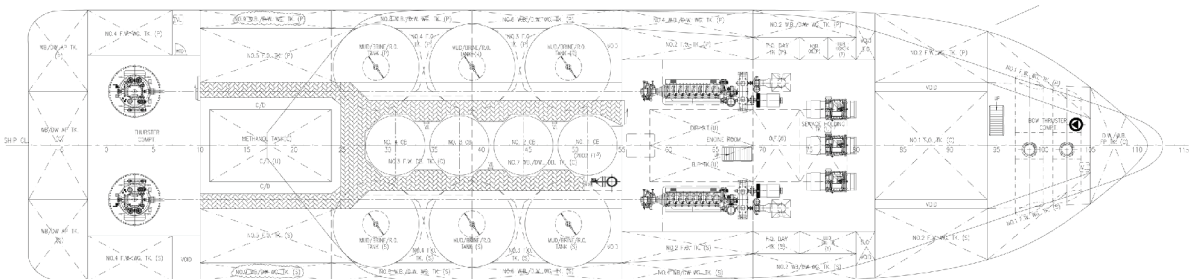
Nav. bridge deck



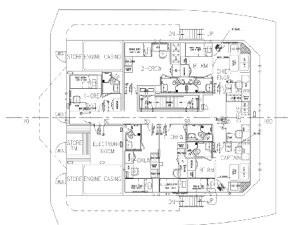
Outboard profile



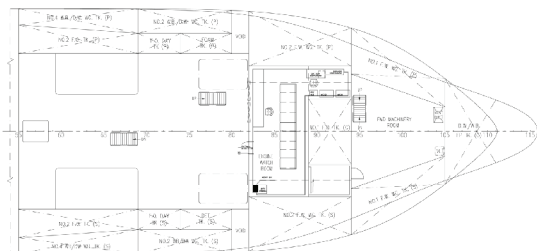
Main deck



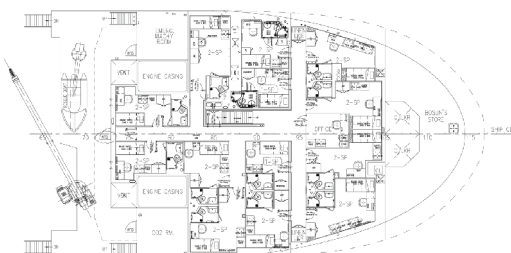
Below deck



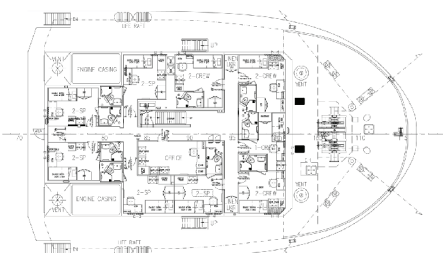
Officer deck



Tween deck



Forecastle deck



Upper forecastle deck

#### CONTACT

Commercial Department

Topaz Energy and Marine

Level 58, Almas Tower, Jumeirah Lakes Towers

P.O. Box 282800, Dubai, UAE

Tel +971 4 440 47 00

Fax +971 4 440 47 99

Email [commercial.topaz@topazworld.com](mailto:commercial.topaz@topazworld.com)