



**TEAM OFFSHORE  
NIGERIA**

# Team Beleuzi

75 M - 3258 t DWT - DP2 - Platform Supply Vessel

## Vessel Specifications





# Vessel Specifications

## Registration

Year built / builder	2019 / Xiamen Shipbuilding Industry Company Limited
Flag / Port registry	Marshall Islands / Majuro
Class	ABS
Class notations	A1, (E) Offshore Support, Fire Fighting Vessel Class 1, OSR-C, AMS, ACCU, DP2, SPS, HNLS

## Dimensions

Length overall	75 m
Breadth (moulded)	17.25 m
Depth moulded	8 m
Maximum draft	6.6 m
Deadweight at maximum draft	3258 t
Registered tonnage	GRT: 2955 / NRT: 908

## Machinery

Main engine	2 x Niigata, 2206 kW each at 750 rpm
Main generators	3 x Caterpillar, 450 kW each, 415 V, 50 Hz, 3 Ph
Emergency generator	1 x Caterpillar, 80 kW, 415 V, 50 Hz, 3 Ph
Bow thruster	2 x Kawasaki KT-88B3 CPP, 650 kW, 10 t thrust
Propulsion	each 2 x azimuth fixed pitch rudder propellers
Fresh water maker	2 x 10 t per day
Sewage treatment plant	1 x 50 persons per day

## Cargo capacities and rates

Fuel oil	774 m <sup>3</sup>
Fresh water	546 m <sup>3</sup>
Drill / ballast water	1528 m <sup>3</sup>
Mud / brine / rec oil	740 m <sup>3</sup>
Base oil / methanol	148 m <sup>3</sup>
Dry bulk	228 m <sup>3</sup>
Foam	13 m <sup>3</sup>
Detergent	13 m <sup>3</sup>
Cargo deck area	700 m <sup>2</sup>
Deck cargo capacity	1200 t
Deck strength	5 mt/m <sup>2</sup>

## Discharge rates

Fuel oil	2 x 150 m <sup>3</sup> per hour @ 80 m head
Fresh water	1 x 100 m <sup>3</sup> per hour @ 85 m head
Drill / ballast water	1 x 100 m <sup>3</sup> per hour @ 80 m head
Mud / brine / rec oil	2 x 75 m <sup>3</sup> per hour @ 90 m head
Base oil / methanol	1 x 70 m <sup>3</sup> per hour @ 7.0 bar
Dry bulk compressors	2 x 20 m <sup>3</sup> /min at 80 psi

## DP equipment

DP system maker	Kongsberg
References	2 x DGPS, 1 Laser Reference system 2 x Wind sensor, 2 x Gyro, 2 x VRU

## Deck crane

Provision crane	Hydraulic telescopic crane, SWL: 3 t; working radius: 10 m
-----------------	------------------------------------------------------------



# Vessel Specifications

---

## Deck machinery equipment

Anchors	2 x 1980 kg high holding anchors
Anchor chain	2 x 467.5 m (length) x 46 mm (dia.), Grade U2 stud link chains
Anchor windlass	1 x 13 t @ 18 m/min for 46 mm chain
Capstans	2 x 10 t @ 25 m/min, electro hydraulic
Tugger winches	2 x 10 t @ 24 m per min, electro hydraulic

---

## Performance

Economical speed	10 knots
Maximum speed	12.5 knots fully loaded to 6.6 m draft

---

## Navigation and Communication equipment

Two-way Portable VHF Radio Telephone (GMDSS Type)	
GPS Navigator	1 set
Navtex receiver	1 set
MF/HF radio	1 set
VHF radio telephone	2 sets
Inmarsat-C	1 set
Echo Sounder	1 set
Radars	2 units
Magnetic Compass	1 unit
Gyro Compass	1 unit
Speed Log	1 set x Doppler speed log
Anemometer	1 set
EPIRB	1 set
Joystick Control	Yes

---

## Firefighting and anti-pollution equipment

FIFI System	FIFI class 1
Fire pumps	2 x 1500 m <sup>3</sup> /hr
Fire monitors (water / foam)	2 x 1200 m <sup>3</sup> /hr
Dispersant system	20 m <sup>3</sup> capacity with 6 m length spray boom on each side of vessel

---

## Emergency rescue and lifesaving equipment

Rescue boat	1 x 6 men capacity, diesel powered
Life rafts	6 x 25 men, as per SOLAS requirements
Lifebuoys	8 nos., as per SOLAS requirements
Life jackets	as per SOLAS standards

---

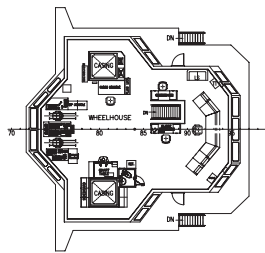
## Accommodation, Hospital and Offices (50 bunks)

6 x 1 man cabin	6 bunks
22 x 2 men cabin	44 bunks
Total	50 bunks
Hospital	1 berth
Offices	3 nos

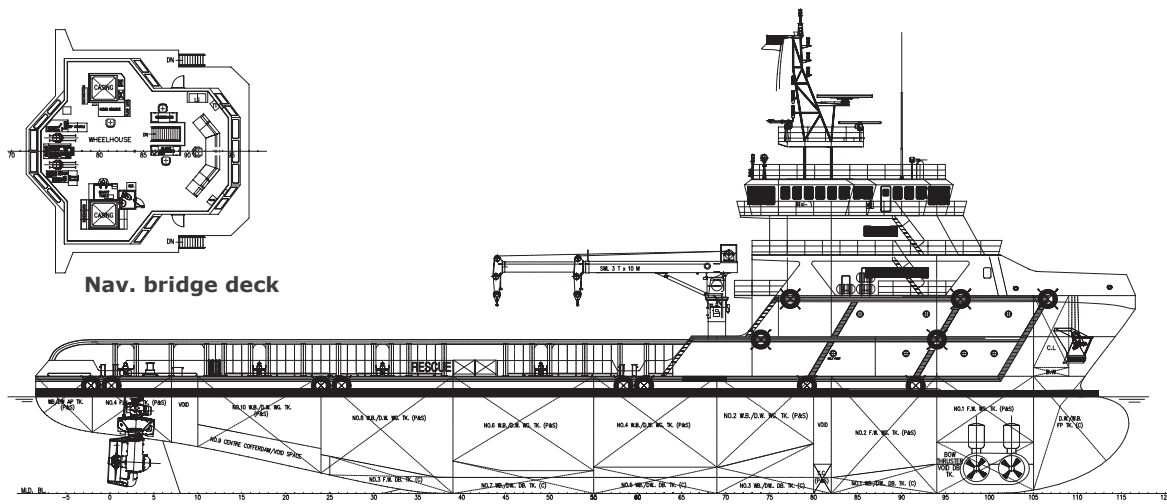
All cabins fully air conditioned and c/w attached washroom.



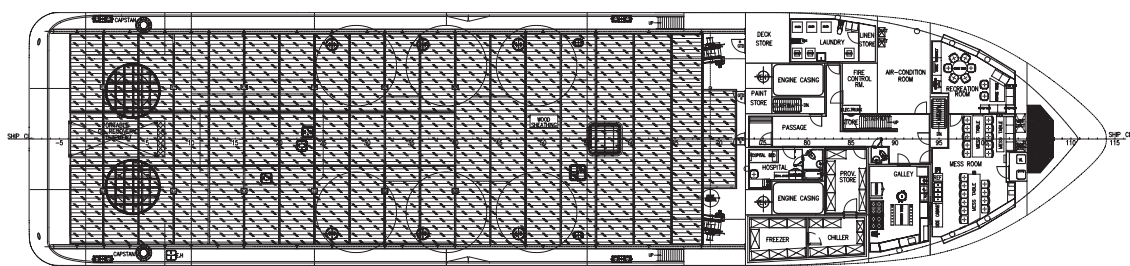
# Vessel Specifications



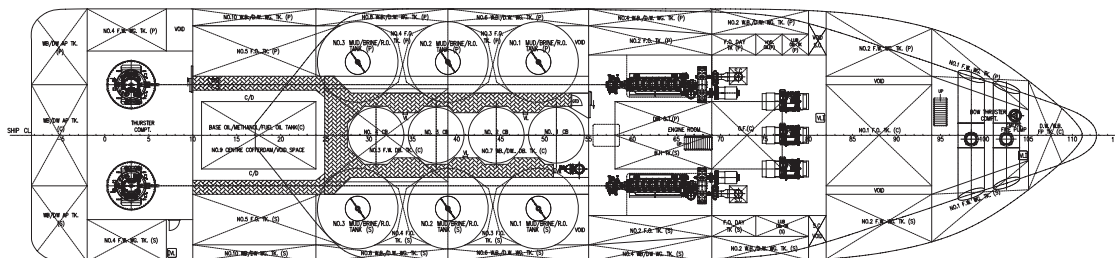
**Nav. bridge deck**



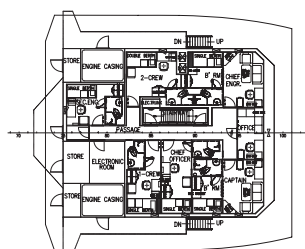
**Outboard profile**



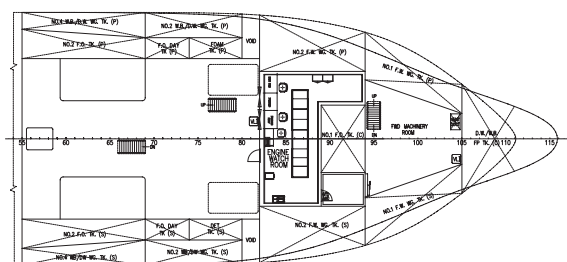
**Main deck**



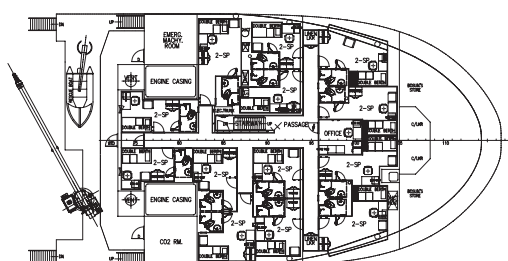
**Below deck**



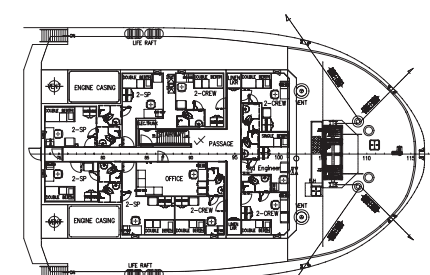
**Officer deck**



**Tween deck**



**Forecastle deck**



**Upper forecastle deck**

## CONTACT

TEAM Offshore Nigeria Limited  
Atlantic House – 4th Floor, 121  
Louis Solomon Close (Off Ahmadu Bello Way),  
Victoria Island, Lagos State, Nigeria  
Tel: +234 (0) 908 756 8809  
Email: [info@team-offshore.com](mailto:info@team-offshore.com)