

DMS Challenger III

58 M - 4000 BHP - Multi-Purpose Supply Vessel

Vessel Specifications

TOPAZ
MARINE



Vessel Specifications

Registration

Year built / builder	2005 / Fujian Mawei Shipbuilding Ltd, China
Flag / port of registry	Marshall Islands / Majuro
Class	ABS, +A1, fire fighting vessel class 1, offshore support vessel, E, AMS
Managers	Topaz Marine

Dimensions

Length overall	57.50 m
Breadth moulded	13.80 m
Depth moulded	5.50 m
Draft	4.50 m
Deadweight	1350 m / t
Registered tonnage	GRT 1387 / NRT 416

Machinery

Main engines	4000 bhp - 2 x 2000 bhp@1600 rpm, Caterpillar 3516B
Propulsion	Fixed pitch 360 deg Azimuths, SRP 1212FP, SCHOTTEL / GmbH
Bow thrusters	1 x Schottel STT330LK CPP, electric motor drive, 343 kw
Main generator	3 x Caterpillar 3408, 315 kw each 415 V / 50 Hz / 3 Ph
Emergency generator	1 x Stamford type UC M274E2, 70 kw, 415 V / 3 Ph / 50 Hz
Oily water separator	1.0 m ³ / hr with 15 ppm alarm, make: Hamworthy
Sewage treatment plant	1 x 50 person capacity, make: Hamworthy ST-4A

Deck Crane

Port side	Sormec Marine Telescopic Boom Crane - M460/3S Maximum outreach in horizontal position: 36.5 m radius SWL: 5 t @ 36.5 m working radius SWL: 10 t @ 23 m working radius SWL: 18 t @ 7.5 m working radius
-----------	--

Capacities

Fuel oil	451 m ³
Fresh water	199 m ³
Drill / ballast water	374 m ³
Liquid mud	162 m ³
Dry bulk	187 m ³ (4 x 1650 cu ft)
Lubricant oil	5.3 m ³
Dispersant / foam	13.5 m ³ each
Freezer and chiller	15 m ³ and 8 m ³ each
Clear deck area	376 m ²
Deck cargo capacity	500 t @ 7 t / m ²

Transfer rates

Fuel oil	1 x 150 m ³ / hr @ 75 m head
Fresh water	1 x 100 m ³ / hr @ 75 m head
Drill water	1 x 100 m ³ / hr @ 75 m head
Liquid mud	2 x 75 m ³ / hr @ 75 m head
Cement system / bulk	2 x 13 m ³ / min, 5.6 kg / cm ² (80 psi) working pressure

Towing / anchor handling / mooring

Anchor windlass	1 x electro hydraulic with 2 cable lifters and 2 warping drums make: South China Marine
Anchor chain	1 x 192.5 m & 1 x 220 m x 34 mm diameter, grade U2 stud link chains
Anchors	2 x 1590 kg high-holding power
Tugger winch	5 t @ 15 m / min electro hydraulic, drum capacity 100 m x 20.5 m wire
Capstan	2 x 5 t @ 15 m / min electro hydraulic

Vessel Specifications

Performance

Maximum speed	12 knots
Service speed	10 knots

Navigation and communication

Inmarsat C	1 x Nera World Phone
GMDSS	Furuno, Area A3, Furuno FM 8500
X band radars	1 x Furuno FR 2125, 1 x Furuno FR 1510 Mark 3
GPS Navigator	2 x Furuno GP-90
AIS	1 x Furuno
Autopilot	1 x Anschutz
Navtex receiver	1 x Furuno NX-500
Gyro compass	1 x Raytheon Standard 22
Magnetic compass	1 x Classen & Plath
Communications: data / fax / phone	1 x Sailor Mini M TT3034B
MF / HF SSB Radio	1 x Furuno FS-1503
Echo sounder	1 x Furuno FE 700
MF / HF transceiver	1 x Furuno
2-way VHF radio	3 x Furuno FM 8500
Portable VHF	4 x Motorola GP 340
SART	2 x Jotron Tront Sart
Doppler log (port & starboard)	1 x Furuno DS-80, 1 x Furuno DS-830
Weather facsimile receiver	1 x Furuno Fax 207
Anemometer	1 x Obsermet
EPIRB	1 x Saracom EB 10
Joystick Control	1 x Kongsberg Cjoy
VSAT system	1 x Astra

Firefighting equipment and antipollution equipment

FIFI system	FIFI Class 1 with water curtain all round
FIFI monitors	2 x 1200 m ³ / hr @ 12 bar 1 x monitor driven by starboard main engine 1 x monitor driven by independent diesel drive (CAT 3412) 1 x monitor fitted with double barrel for foam discharge
FIFI pumps	2 x 1500 m ³ / hr @ 14 bar
Fire pumps	2 x 75 m ³ / hr
Emergency fire pump	1 x 25 m ³ / hr
Fireman outfits	6 sets
Fire extinguishers	Fire hydrants and fire extinguishers as per class requirements

Safety equipment

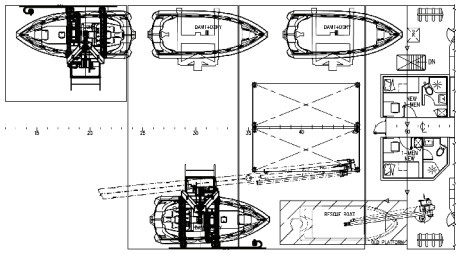
Rescue boat	1 x 6 person rigid rescue boat with launching davit
Life rafts	4 x 25 person inflatable life rafts
Life buoys / life jackets	8 nos. / 62 nos.
MOB	2 x light smoke signal
Parachute distress signals	12 nos.
Handflare distress & smoke signals	12 nos. each
First aid kit	1 no.
Immersion suits	3 nos.
Floodlights / searchlights	5 x 1000 w / 2 x 2000 w
Air horn / electric horn	1 no. each

Accommodation (56 bunks)	6 x 1 person cabins = 6 berths 9 x 2 person cabins = 18 berths 8 x 4 person cabins = 32 berths
---------------------------------	--

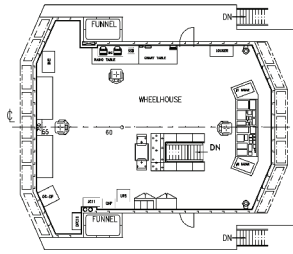
Tank Capacities

	SG	Fuel oil	Pot water	Drill water	Ballast water	Liquid mud	Brine	Base oil	Glycol	Dry bulk	Oil recovery
	M3	0.850	1.000	1.000	1.025	2.500	2.500	0.830	1.120	2.40	1.00
F.W. Wing Tank Port	60.02		60.02								
F.W. Wing Tank Stbd	60.02		60.02								
F.W. DB Tank Centre	79.51		79.51								
DW/WB FP TK (C)	53.67			53.67							
No. 1 DW/WB TK Stbd	22.76			22.76							
No. 1 DW/WB TK Port	22.76			22.76							
No. 2 DW/WB TK Port	36.80			36.80							
No. 2 DW/WB TK Stbd	37.96			37.96							
No. 3 DW/WB TK Port	51.42			51.42							
No. 3 DW/WB TK Stbd	51.42			51.42							
No. 4 DW/WB TK Center	57.67			57.67							
No. 5 DW/WB TK Stbd	19.96			19.96							
No. 5 DW/WB TK Port	19.96			19.96							
No. 1 FO DB TK Stbd	47.43	40.32									
No. 1 FO DB TK Port	45.96	39.07									
No. 2 FO DB TK Stbd	47.65	40.50									
No. 2 FO DB TK Port	49.27	41.88									
No. 1 FO Wing Stbd	34.66	29.46									
No. 1 FO Wing Port	34.66	29.46									
No. 2 FO Wing Stbd	86.33	73.38									
No. 2 FO Wing Port	86.33	73.38									
FO Day Tank Stbd	9.37	7.96									
FO Day Tank Port	9.37	7.96									
Liquid Mud Tank # 1	94.98					237.45					
Liquid Mud Tank # 2	67.03					167.57					
Lube Oil Tank	5.30										
Foam Tank	13.45										
Detergent Tank	13.45										
Bilge Holding	6.92										
Dirty Oil Tank	6.92										
Dry Bulk # 1	46.72									112.13	
Dry Bulk # 2	46.72									112.13	
Dry Bulk # 3	46.72									112.13	
Dry Bulk # 4	46.72									112.13	
Total weight in tons		383.38	199.55	374.38		405.03				448.51	
Total volume in m³		451.03	199.55	374.38		162.01				186.88	

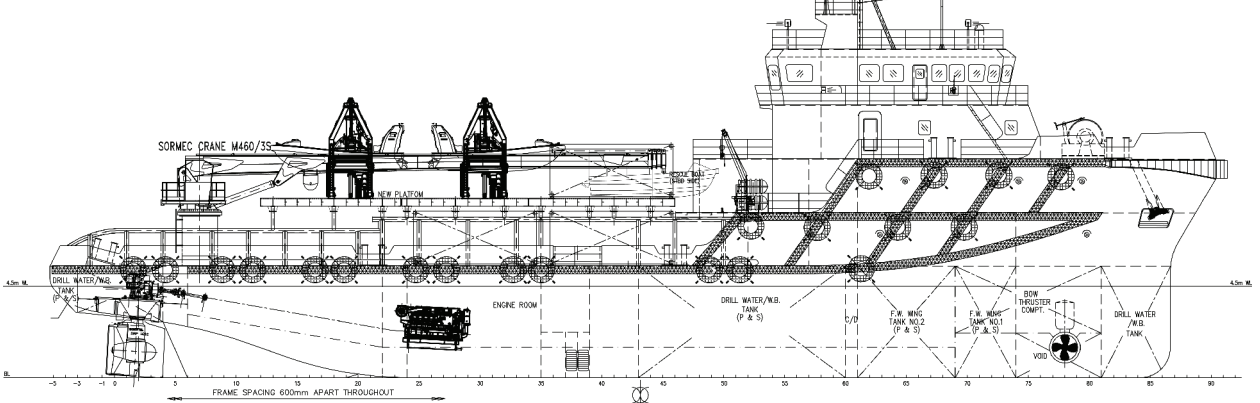
GA Specifications



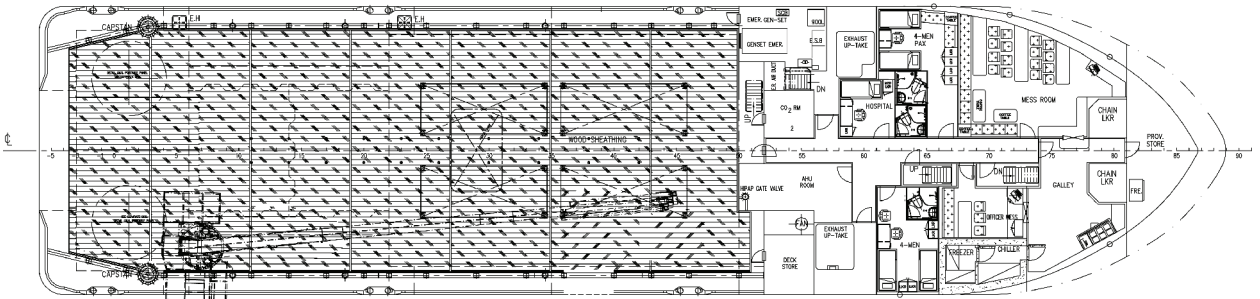
Nav bridge deck



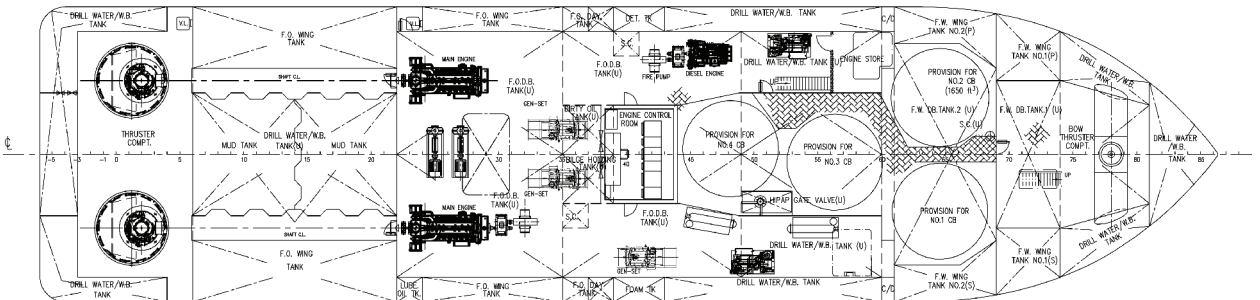
Nav bridge deck



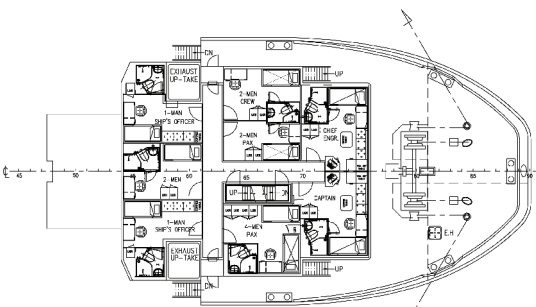
Outboard profile



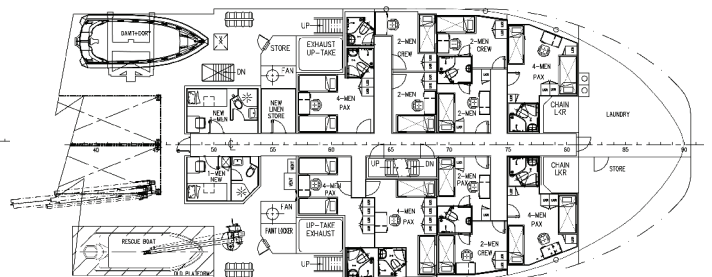
Main deck



Below deck



Forecastle deck



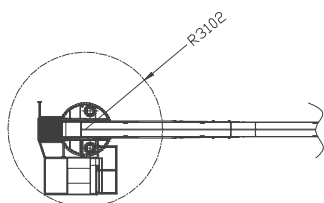
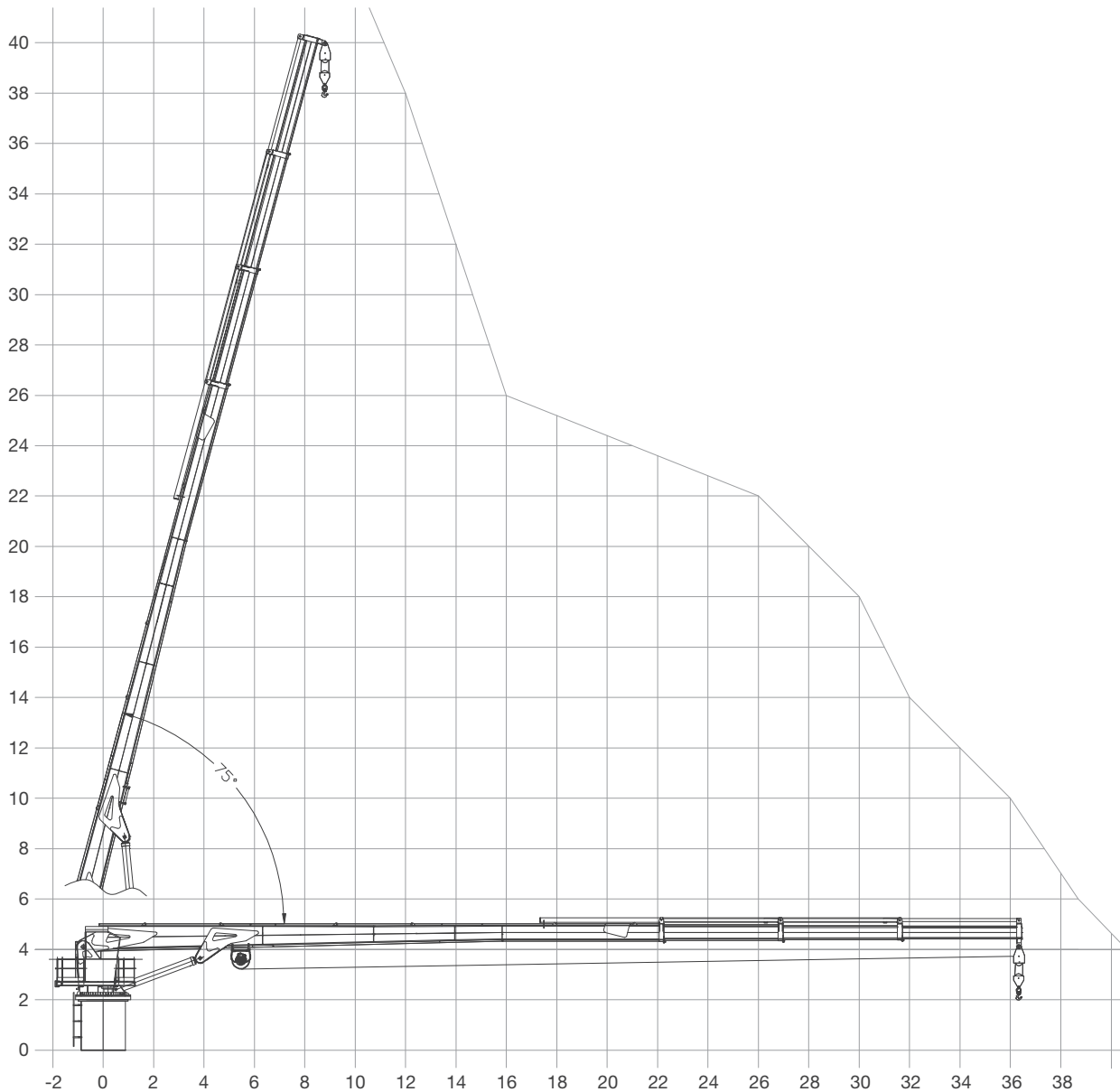
Upper forecastle deck

SORMEC Marine Cranes - M460/3S

Technical Data

Max. Outreach	(m)	36.5
Slewing angle		Continuous
Rotating velocity	(Rpm)	0.6
Max. working pressure	(bar)	280
Recommended pump delivery	(l/min)	230
Oil tank capacity	(l)	1200

SORMEC Marine Crane is designed according to the German Crane Code DIN 15018.



HARBOUR	mm 23000	mm 27500	mm 32000	mm 36500
	kg 10000	kg 7500	kg 5900	kg 5000
SEA STATE 1	mm 23000	mm 27500	mm 32000	mm 36500
	kg 8000	kg 6000	kg 4720	kg 4000
SEA STATE 2-3	mm 23000	mm 27500	mm 32000	mm 36500
	kg 6500	kg 4875	kg 3835	kg 3250
STATIC SWL	mm 7500	mm 12000	mm 18000	
	kg 18000	kg 18000	kg 13500	
DYNAMIC SWL**	mm 7500	mm 12000	mm 18000	
	kg 10200	kg 10200	kg 8000	

CONTACT

Commercial Department
Topaz Energy and Marine
Level 58, Almas Tower, Jumeirah Lakes Towers
P.O. Box 282800, Dubai, UAE
Tel +971 4 440 47 00
Fax +971 4 440 47 99
Email commercial.topaz@topazworld.com

TOPAZ MARINE CASPIAN
BUE Caspian Limited
5th Floor, ISR Plaza Business Centre
69 Nizami Street, Baku
AZ1005 Azerbaijan
Tel +994 124 97 87 67
Fax +994 124 97 25 96
Email commercial.caspian@topaz-marine.com

BUE Kazakhstan Limited
2nd Floor, Building 80, Micro Region 14
P.O. Box 130000, Aktau
Republic of Kazakhstan
Tel +7 7292 42 82 72
Fax +7 7292 42 82 77
Email commercial.caspian@topaz-marine.com

BUE Marine Turkmenistan Limited
Bitarap Turkmenistan Shayoly 231,
Oguzkent Hotel Business Centre,
Office 401, Ashgabat, Turkmenistan
Tel +993 12 44 99 38
Fax +993 12 44 99 39
Email commercial.caspian@topaz-marine.com

Topaz Astrakhan Limited
7, Turgeneva str, 2nd Floor
Tel +7 8512 23 80 72
Fax +7 8512 23 80 72
Email commercial.caspian@topaz-marine.com

TOPAZ MARINE MENA
Doha Marine Services WWL
P.O. Box 37102, 4th Floor, Faisaliyah Building
Suheim Bin Hamad Street, Al Saad Area
Doha, State of Qatar
Tel +974 4410 48 00
Fax +974 4447 94 73
Email commercial.mena@topaz-marine.com

Topaz Marine Saudi Arabia Co Ltd.
P.O. Box 4905, Al Jarbou Tower, 9th Floor,
Office 902
Dhahran Street
Al Khobar 31952, Kingdom of Saudi Arabia
Tel +966 13 835 36 30
Fax +966 13 833 41 58
Email commercial.mena@topaz-marine.com

TOPAZ MARINE AFRICA
Topaz Marine Angola
138 Ilha do Cabo
Avenida Murtala Mohammed
Luanda, Angola
Tel +244 222 7250 55
Email commercial.africa@topaz-marine.com

Topaz Marine Nigeria
3rd Floor, Atlantic House
121 Louis Solomon Close, Ahmadu Bello Way
Victoria Island, Lagos, Nigeria
Email commercial.africa@topaz-marine.com