

DMS 2000

61 M - 5300 BHP - Anchor Handling Tug Supply Vessel

Vessel Specifications



Vessel Specifications

General

Flag	Kazakhstan
Class	*A1, Towing Vessel, (E), *AMS
Year of build	1999
Place of build	Singapore
Call sign	UNFU

Dimensions

Length Overall	61 m
Length Waterline	58 m
Breadth Moulded	13.8 m
Depth Moulded	5.8 m
Draft (Max)	4.8 m
GRT / NRT	1402 / 567 t

Machinery

Main engines	2 x 2650 Bhp Wartsila 6L26
Auxiliary engines	2x 300 kw, 415 v/ 3 ph / 50 hz
Shaft generator	2 x 550 kw
Bow thruster	1 x 690 Hp CPP at 8 t thrust
Propellers	Four bladed with dia 2.7 m
Rudders	2 x Becker rudders
Anchor	2 x 1590 kg stockless bower anchors, 825 m x 34 mm diameter chains

Towing and anchor handling equipment

Bollard pull	57 tons
Towing / anchor	Zicom electro hydraulic double drum
Handling winch	Waterfall winch
Upper drum cap	58 mm dia x 1000 m (L)
Lower drum cap	52 mm dia x 500 m (L) c/w 2 wildcats for 2.75 inches diameter chains
Stall pull	150 mt
Line pull	100 mt @ 4 m/mm at 1 st layer
Brake capacity	180 mt

Discharge Rates

Fuel oil	100 m ³ per hr @ 75 m per head
Potable water	100 m ³ per hr @ 75 m per head
Drill water	100 m ³ per hr @ 75 m per head
Liquid mud	100 m ³ per hr @ 75 m per head
Bulk cement	80 psi working pressure

Capacities

Fuel oil	500 m ³
Lube oil	10 m ³
Fresh water	600 m ³
Drill water / SWB	330 m ³
Liquid mud	111 m ³
Bulk mud	4 x 1500 ft ³
Freezer	8 m ³ / -18 °C
Cooler	8 m ³ / -4 °C
Foam	10 m ³
Water maker	Reverse osmosis 5 t per day

Performance

Maximum speed	13.5 knots at 18.5 t every 24 hrs (approx)
Economical speed	11 knots at 10 t every 24 hrs (approx)
Type of fuel	Marine gas oil
Range	5500 nautical miles @ 12 knots (approx)

Vessel Specifications

Communication and navigation equipment

SSB	1 unit 250 watts
VHF	2 units 25 watts
Radar	2 units 96 n.mile
Echo sounder	1 unit 800 m depth
Gyro compass	1 unit
GMDSS	Area 3
Magnetic compass	1 unit
Speed log	1 unit
Auto pilot	1 unit
Navtex receiver	1 unit
DGPS navigator	1 unit
Joystick	Yes

Fire fighting equipment

External

Emergency fire pump 1 x 25 m³ per hr @ 45 m head

Internal

CO₂ system in engine room & bow thruster compartment

Life-saving equipment

Search lights	4 x 2000 w halogen tungsten lights
Floodlights	5 x 1000 w orange lights
Life rafts	3 x 20 men, 1 x 25 men
Life buoys	9 pcs
Work vests	6 pcs
Immersion suits	29 pcs
Fast rescue craft	NOREQ 650 Twin, 13 persons, Eng-2 x Yamaha 75, Max speed at 33 knots
Hydraulic davit	Hydra Marine HMD A32
Breathing apparatus	6 BA sets

Accommodation

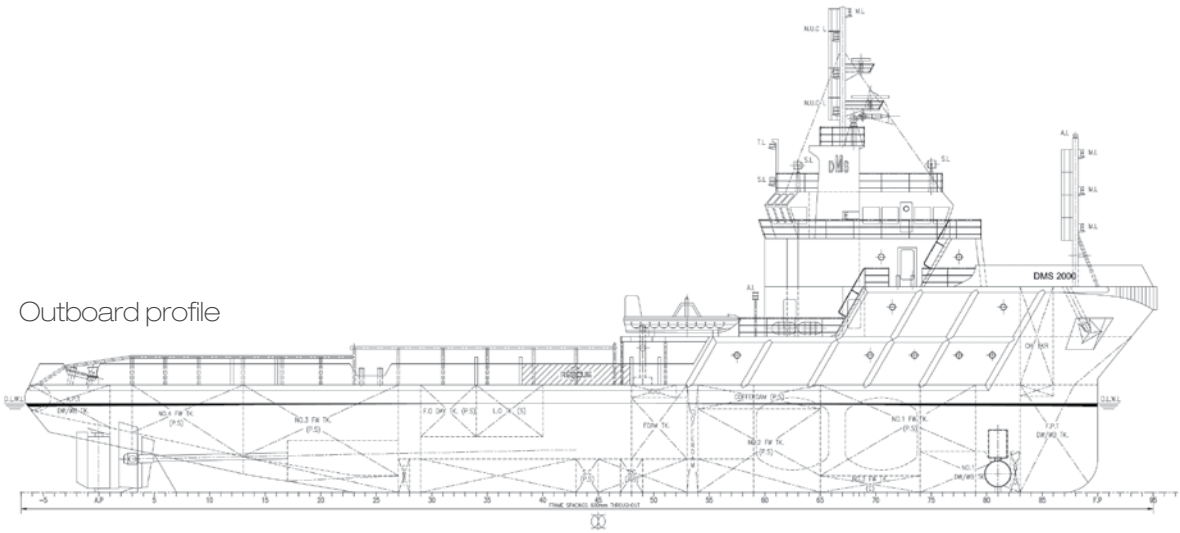
Single cabins	6
2-men cabins	3
4-men cabins	3
Total	24 persons
Hospital	1
Mess / Recreation room	1

All cabins fully air-conditioned.

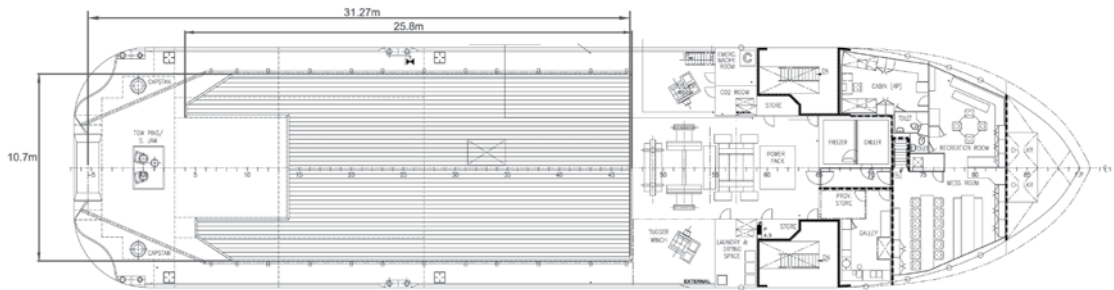
Last revision June 2015

GA Specifications

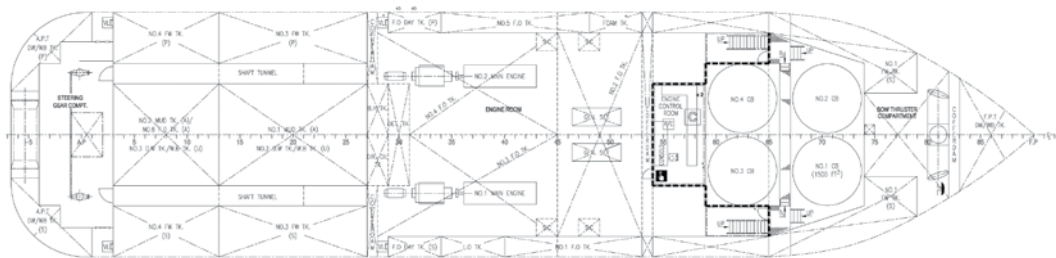
Outboard profile



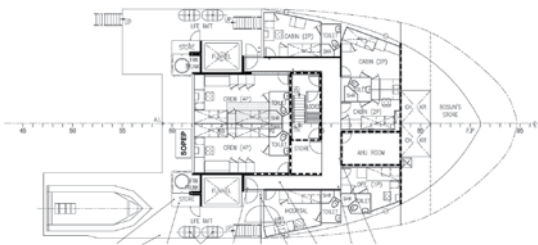
Main deck



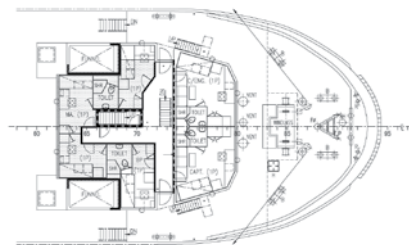
Tween deck



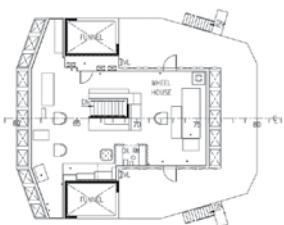
Upper forecastle deck



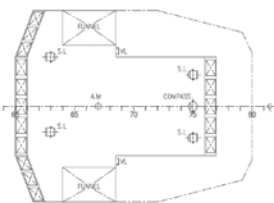
Forecastle deck



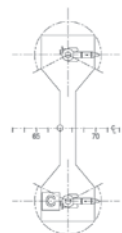
Wheelhouse deck



Top of wheelhouse



Monitor platform plan



CONTACT

Commercial Department
Topaz Energy and Marine
Level 58, Almas Tower, Jumeirah Lakes Towers
P.O. Box 282800, Dubai, UAE
Tel +971 4 440 47 00
Fax +971 4 440 47 99
Email marketing.topaz@topaz-marine.com

TOPAZ MARINE MENA

Doha Marine Services WWL
P.O. Box 37102, 4th Floor, Faisaliyah Building
Suheim Bin Hamad Street, Al Saad Area
Doha, State of Qatar
Tel +974 4410 48 00
Fax +974 4447 94 73
Email marketing.mena@topaz-marine.com

Topaz Marine Saudi Arabia Co Ltd.
P.O. Box 4905, Al Jarbou Tower, 9th Floor, Office 902
Dhahran Street
Al Khobar 31952, Kingdom of Saudi Arabia
Tel +966 13 835 36 30
Fax +966 13 833 41 58
Email saudi.arabia@topaz-marine.com

TOPAZ MARINE AFRICA

Topaz Marine Nig Ltd
35 Tombia Street, GRA Phase 1
Rivers State, Port Harcourt, Nigeria
Tel +234 80 3707 9338
Email marketing.africa@topaz-marine.com

TOPAZ MARINE SUBSEA

Topaz Energy and Marine Limited
P.O. Box 261005, Building 33, Oilfields Supply Centre
Jebel Ali Free Zone, Dubai, UAE
Tel +9714 883 29 29
Fax +9714 883 29 59
Email topaz.marine@topaz-marine.com

TOPAZ MARINE CASPIAN

BUE Caspian Limited
5th Floor, ISR Plaza Business Centre
69 Nizami Street, Baku
AZ1005 Azerbaijan
Tel +994 124 97 87 67
Fax +994 124 97 25 96
Email topazmarine.azn@topaz-marine.com

BUE Kazakhstan Limited
2nd Floor, Building 80, Micro Region 14
P.O. Box 130000, Aktau
Republic of Kazakhstan
Tel +7 7292 42 82 72
Fax +7 7292 42 82 77
Email tmkzh.aktauoffice@topaz-marine.com

BUE Marine Turkmenistan Limited
Bitarap Turkmenistan Shayoly 231,
Oguzkent Hotel Business Centre,
Office 401, Ashgabat, Turkmenistan
Tel +993 12 44 99 38
Fax +993 12 44 99 39
Email topazmarine.turk@topaz-marine.com

Topaz Astrakhan Limited
7, Turgeneva str, 2nd Floor
Tel +7 8512 23 80 72
Fax +7 8512 23 80 72
Email topaz.astr@topaz-marine.com