

# Citadel

72 M - 3300 DWT - DP2 - Platform Supply Vessel

Vessel Specifications



# Vessel Specifications

## General

Type	Platform supply vessel UT755L
Flag	Azerbaijan
Class	DNV +1A1, SF EO DYNPOS-AUTR DK(+) HL(2.5)
Year of build	2005
Place of build	Simek, Norway
Port of registry	Baku
Call sign	4JNF
IMO number	9369540

## Dimensions

Length overall	72 m
Length between perpendicular	67.8 m
Breadth moulded	16 m
Depth moulded	7 m
Draft summer / scantling	5.8 m
Deadweight	3300 t
Net registered tonnage	987 t
Gross tonnage	2082 t

## Machinery

Main engines	2 x Bergen 2005 kw (4010 kw)
Main generators (shaft driven)	2 x 298 kw / 440 v / 3 ph / 60 hz
Main generators (diesel driven)	2 x 248 kw / 440 v / 3 ph / 60 hz
Emergency generator	1 x John Deere 48 kw / 60 hz
Bow thruster	2 x 590 kw CPP tunnel
Stern thruster	2 x 550 kw CPP tunnel
Propulsion	2 x CPP (no nozzles)
Rudders	2 x Ulstein high lift
Steering gear	Tennfjord / -T622

## Ancillary equipment

Sewage treatment plant	DVZ-SKA-30 Services GMBH, Germany
Oily water separator	Hele-Sep 1000 OLD
Liquid mud agitator	RW 5531 / Allweiler

## Performance

Maximum speed / consumption	14 knots / 14 t
Economical speed / consumption	10 knots / 7 t
Consumption at 100% MCR	14 t

## Capacities

Fuel oil	1000 m <sup>3</sup>
Potable water	823 m <sup>3</sup>
Ballast / drill water	1300 m <sup>3</sup>
Liquid mud / base oil	6000 bbls / 1258 bbls
Brine	2390 bbls
Dry bulk tanks	11250 ft <sup>3</sup>
Deck cargo capacity	1530 t
Deck strength	5 t per m <sup>2</sup>
Clear deck area m <sup>2</sup>	680 m <sup>2</sup>
Clear deck area max L x B	49.5 m x 13.75 m

## Transfer rates

Fuel	200 m <sup>3</sup> per hr @ 9 bar
Freshwater	200 m <sup>3</sup> per hr @ 9 bar
Drill water / ballast water	200 m <sup>3</sup> per hr @ 9 bar
Liquid mud / brine	75 m <sup>3</sup> per hr @ 18 bar
Base oil	150 m <sup>3</sup> per hr @ 9 bar
Bulk cement	80 t per hr
Bilge / ballast	150 m <sup>3</sup> per hr @ 9 bar

# Vessel Specifications

## Towing and anchor handling equipment

Tugger winch	2 x 10 t
Bow fendering	No

## Mooring Equipment

Anchor windlass	Brattvaag LB.MGA1038MA
Bow anchors	2 x Speck 2460 kg
Chains	220 m x 38 mm / K3
Capstan	Brattvaag 2 x 8 t

## Deck Crane

Manufacturer	1 x Norlift
SWL and radius	3 t x 16 m
Location	Starboard main deck

## Communication and navigation equipment

GMDSS station	Area 3
Satcom and type	Sat C Furuno Felcom15
SSB	Furuno Felcom15
AIS	Furuno FA 150
EPIRB	Jutron 40S
Radar Transponder	2 x Tron SART 9
Two-way portable VHF / UHF	ICOM IC-M1
Navtex receiver	Furuno NX-700
DP system	L3, NMS 6000 Nautronix, DP2
DP reference systems	2 x Fugro Seastar DGPS 1 x Cyscan
Radar 1	1 x Furuno FAR-2137S 10 cm ARPA
Radar 2	1 x Furuno FAR-2117 3 cm
Gyro compass	3 x Anshultz standard 22
Auto pilot	1 x Anshultz standard 22
GPS receiver	Furuno GPR 150
Echo sounder	1 x Furuno FE-700
Anemometer	2 x Yong

## Fire fighting and anti-pollution equipment

Emergency fire pump	45 m <sup>3</sup> x 60 m
Locker with fireman's outfit	3
Portable FIFI applicances	30 x fire extinguishers 13 x hoses
CO2 system for engine room	Yes

## Safety equipment

Life rafts	4 x 25 men
Fast rescue boat	1
Rescue boat davit	1
Life buoys	8
Life jackets	86
Immersion suits	50
Embarkation ladders	2

## Accommodation

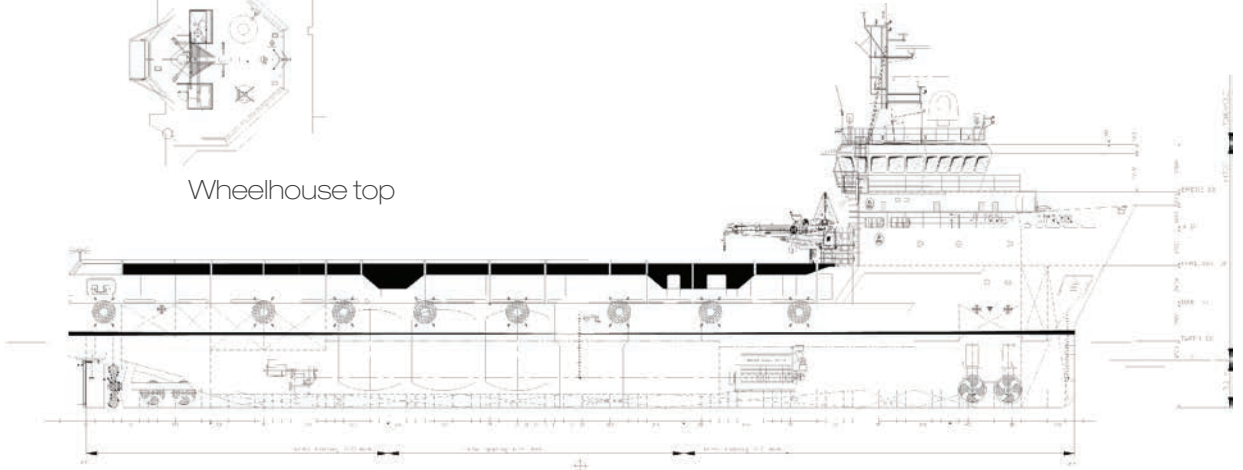
Max per LSA	47
1 berth cabins	4
2 berth cabins	4
4 berth cabins	6
Sick bay / hospital	Yes



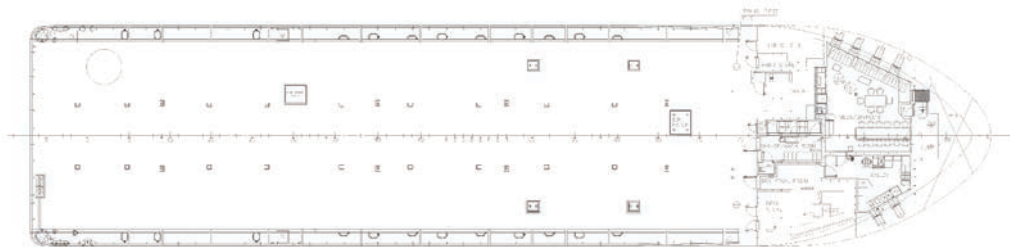
# GA Specifications



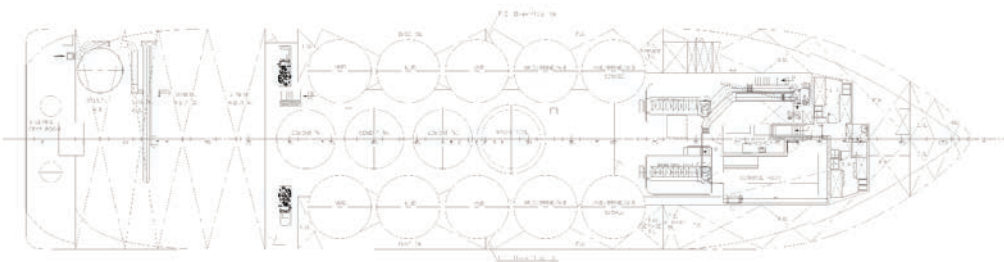
Wheelhouse top



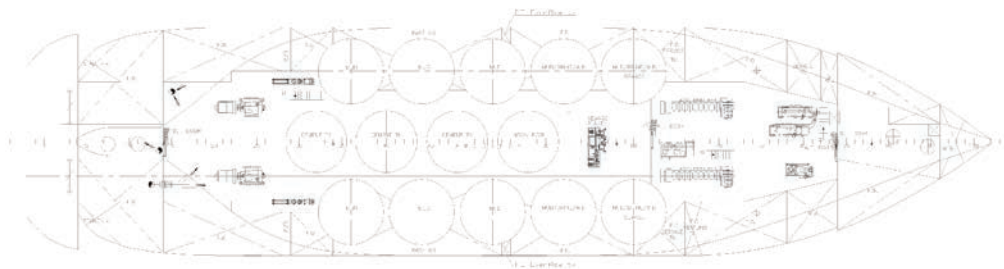
Profile



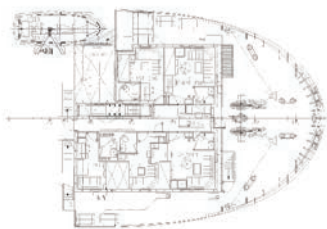
Main deck



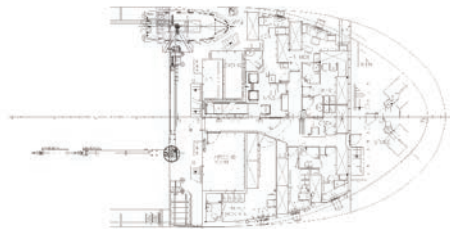
Tween deck



Tank top



Forecastle deck



A-deck



Wheelhouse

## CONTACT

Commercial Department  
Topaz Energy and Marine  
Level 58, Almas Tower, Jumeirah Lakes Towers  
P.O. Box 282800, Dubai, UAE  
Tel +971 4 440 47 00  
Fax +971 4 440 47 99  
Email [marketing.topaz@topaz-marine.com](mailto:marketing.topaz@topaz-marine.com)

### TOPAZ MARINE MENA

Doha Marine Services WWL  
P.O. Box 37102, 4th Floor, Faisaliyah Building  
Suhaim Bin Hamad Street, Al Saad Area  
Doha, State of Qatar  
Tel +974 4410 48 00  
Fax +974 4447 94 73  
Email [marketing.mena@topaz-marine.com](mailto:marketing.mena@topaz-marine.com)

Topaz Marine Saudi Arabia Co Ltd.  
P.O. Box 4905, Al Jarbou Tower, 9th Floor, Office 902  
Dhahran Street  
Al Khobar 31952, Kingdom of Saudi Arabia  
Tel +966 13 835 36 30  
Fax +966 13 833 41 58  
Email [saudi.arabia@topaz-marine.com](mailto:saudi.arabia@topaz-marine.com)

### TOPAZ MARINE AFRICA

Topaz Marine Angola  
138 Ilha do Cabo  
Avenida Murtala Mohammed  
Luanda, Angola  
Tel +244 222 7250 55  
Email [marketing.africa@topaz-marine.com](mailto:marketing.africa@topaz-marine.com)

Topaz Marine Nig Ltd  
3rd Floor, Atlantic House  
121 Louis Solomon Close, Ahmadu Bello Way,  
Victoria Island, Lagos  
Email [marketing.africa@topaz-marine.com](mailto:marketing.africa@topaz-marine.com)

Topaz Marine Africa (Dubai Office)  
Topaz Energy and Marine Limited  
Building 33, Oilfields Supply Centre, Jebel Ali Free Zone  
P.O. Box 261005, Dubai, UAE  
Tel +9714 883 29 29  
Fax +9714 883 29 59  
Email [topaz.marine@topaz-marine.com](mailto:topaz.marine@topaz-marine.com)

### TOPAZ MARINE CASPIAN

BUE Caspian Limited  
5th Floor, ISR Plaza Business Centre  
69 Nizami Street, Baku  
AZ1005 Azerbaijan  
Tel +994 124 97 87 67  
Fax +994 124 97 25 96  
Email [topazmarine.azn@topaz-marine.com](mailto:topazmarine.azn@topaz-marine.com)

BUE Kazakhstan Limited  
2nd Floor, Building 80, Micro Region 14  
P.O. Box 130000, Aktau  
Republic of Kazakhstan  
Tel +7 7292 42 82 72  
Fax +7 7292 42 82 77  
Email [tmkzh.aktauoffice@topaz-marine.com](mailto:tmkzh.aktauoffice@topaz-marine.com)

BUE Marine Turkmenistan Limited  
Bitarap Turkmenistan Shayoly 231,  
Oguzkent Hotel Business Centre,  
Office 401, Ashgabat, Turkmenistan  
Tel +993 12 44 99 38  
Fax +993 12 44 99 39  
Email [topazmarine.turk@topaz-marine.com](mailto:topazmarine.turk@topaz-marine.com)

Topaz Astrakhan Limited  
7, Turgeneva str, 2nd Floor  
Tel +7 8512 23 80 72  
Fax +7 8512 23 80 72  
Email [topaz.astr@topaz-marine.com](mailto:topaz.astr@topaz-marine.com)