

# Caspian Voyager

79.5 M - 4000 DWT - FiFi 1 - DP 2 - Platform Supply Vessel

Vessel Specifications

**TOPAZ**  
MARINE



# Vessel Specifications

## Registration

Year built / builder	2012 / Selah Shipyard, Tuzla, Turkey
Port of registry / Flag	Baku / Azerbaijan
Class	ABS - *A1 (E) Offshore Support Vessel, *AMS, *ACCU, *DPS-2, *FFV Class 1, Enviro, UWILD, GP, Oil Recovery Capability Class 2
Additional Notes	*SPS Code – Resolution MSC.266(84)
Regulations	ABS, COLREG, Load Line, SOLAS Certificates, Tonnage Certificate, Marpol Annex I,II,IV,V,VI, IMO A493-494, IMO A749 (18), IMO 673 (16), IMO A325, ISPS Code, MSC 645, MSC 664, MSC 235 (82)
Design	MMC 879 CP
Call sign	ZGDQ2
IMO number	9658111

## Dimensions

Length overall	79.45 m
Length between perpendicular	76.1 m
Breath moulded	16.8 m
Depth moulded	7.4 m
Summer draft	6 m
Deadweight	4000 t
Gross tonnage	2997 t
Net tonnage	1305 t

## Machinery

Main engines	2 x MAK 8M25C 2500 kW (6705 BHP)
Shaft generators	2 x 1400 kW
Auxiliary generators	3 x 585 kW
Emergency generator	1 x 200 Kw
Bow thrusters	2 x Berg 800 kW
Stern thrusters	2 x Berg 600 kW
Rudders	2 x DDS 10000-45 High Lift

## Deck equipment

Capstans	2 x 8 t
Tugger winches	2 x 8 t SWL
Deck crane	1 x 2 t @ 12 m

## Performance

Max speed	15 knots
Consumption	TBA @ 14 kts
	TBA @ 10 kts

\*Consumption of MGO/24 hours in Sea-state 2

## Capacities

Fuel oil	936 m <sup>3</sup>
Potable water	909 m <sup>3</sup>
Drill water	909 m <sup>3</sup>
Liquid mud	531 m <sup>3</sup> /3330 bbls
Base oil	207 m <sup>3</sup> /1300 bbls
Brine	531 m <sup>3</sup> /3330 bbls
Dry bulk (tanks):	230 m <sup>3</sup> (4 tanks)
Deck area	58.6 x 14 m (820 m <sup>2</sup> )
Working area	50m x 14m (700 m <sup>2</sup> )
Deck load	1600 t
Deck strength	5 t per m <sup>2</sup>

# Vessel Specifications

## Discharge Rates

Fuel	100 m <sup>3</sup> per hr @ 90 m
Potable water	100 m <sup>3</sup> per hr @ 90 m
Drill water	75 / 150 m <sup>3</sup> per hr @ 90 m
Liquid mud	75 m <sup>3</sup> per hr @ 90 m

## Tank capacities

Base oil	150 m <sup>3</sup> per hr @ 90 m
Brine	75 m <sup>3</sup> per hr @ 90 m
Dry bulk	2 x 23 m <sup>3</sup> per min @ 5.6 bar
Couplings	4 " / 5" AveryHardoll, Weco

## Bulk connection locations

Fuel oil	Aft / mid port, mid stb
Po water	Aft / mid port, mid stb
Drill water	Aft / mid port, mid stb
Dry bulk	Aft port / stb
Liquid mud	Aft / mid port aft / mid stb
Brine	Aft / mid port, mid stbd

## DP equipment

DP system	DP Class 2 / Kongsberg DP 21
References	Radius 1000 Kongsberg DPS 110, 112
Joystick	Kongsberg C-Joy

## Navigation and communication equipment

GMDSS	Sea Area 3
SSB radio	1 x JRC NCM 2150
Radio terminals	2 x Sailor VHF/DSC
VHF handsets	3 x TRON 20 GMDSS
VHF	2 x JRC-JHS-770S
Sat-C station	2 x JRC NTD2150
VSat	N/A
EPIRB	1 x Jotron
SART	2 x Jotron
Radar	1 x JRC JHS 5312-6e X Band 1 x JRC JMA 5332-12 S Band
Sat navigator	1 x JRC JLR 7800
Navtex	1 x JRC NCR 333
Echo Sounder	1 x JRC JFE-380
Gyro	1 x Sperry Navigat X Mk1
Autopilot	1 x Navitron NT991G Mk2
Doppler log	1 x JRC JLN-550
Electronic charts	Not Fitted
AIS	1 x JRC JHS-182

## Fire-fighting equipment

FiFi	Class 1, consisting of the following components: <ul style="list-style-type: none"><li>- 2 off fire-fighting centrifugal pumps FFS SPF250x350HD capacity: 1742 m<sup>3</sup> per hr head: 11,8 mlc 1800 rpm / 790 Kw</li><li>- 2 single/dual flow monitors FFS 1200/300LB joystick controlled from bridge capacity: 1200 m<sup>3</sup>/h - 10,0 bar throw length – capacity full @ 120 m, throw length – capacity reduced @ 75 m</li><li>- 1 foam pump DPVSF 18-100 18 m<sup>3</sup> per hr - 18.5 Kw head: 185 mlc 3420 rpm</li><li>- 2 fog monitors for own protection type ABS water spray system with standard tug nozzles 1061 m<sup>3</sup> per hr @ 7.8 bar</li></ul>
------	----------------------------------------------------------------------------------------------------------------------------------------------------------------------------------------------------------------------------------------------------------------------------------------------------------------------------------------------------------------------------------------------------------------------------------------------------------------------------------------------------------------------------------------------------------------------------------------------------------------------------------------------------------------------------------------------

# Vessel Specifications

## Rescue and life saving equipment

Fast rescue boat	1
Life rafts	6 Viking 16 man
Search lights	2 nos. remotely controlled from bridge
Life buoys	6 nos. provided with strobe lights and lifelines
Hospital	1 x with treatment bench, racks for stretchers, desk, medicine, poison locker
Dispensary	1x with medical equipments / medicine in accordance with Flag's State and International requirements

---

## Accommodation

1 man cabins	8
2 man cabins	12
Hospital / Dispensary	1 cabin, 2 berths
Total number of bunks	30
Recreation rooms	Gym, day room lounge, smoking room
Ship's office	Fitted
Sky lobby	Fitted

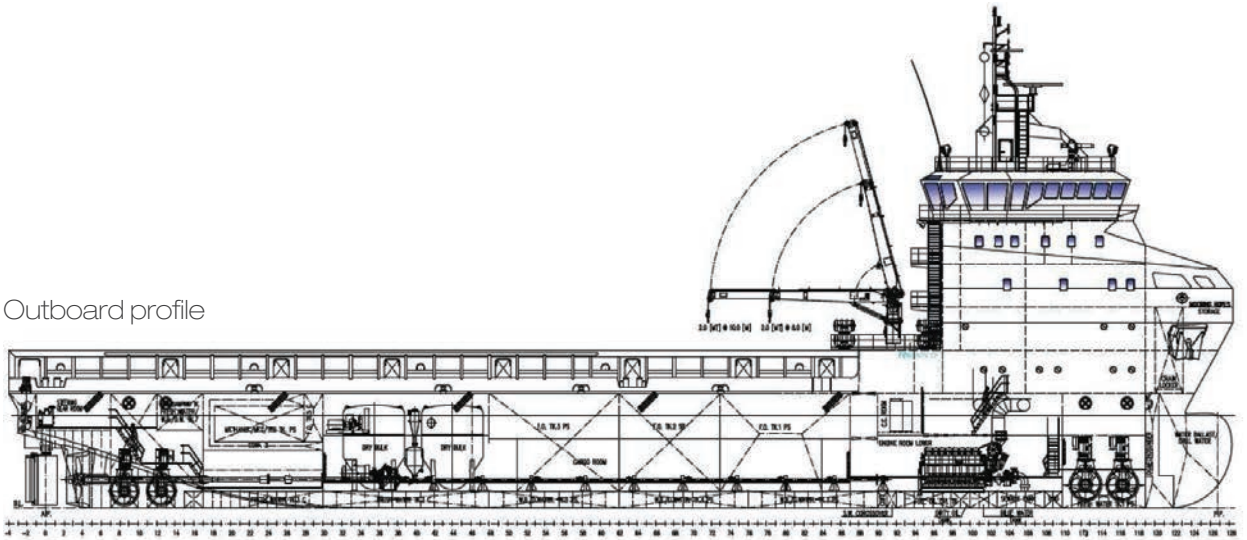
Last revision May 2014

# Tank Capacities

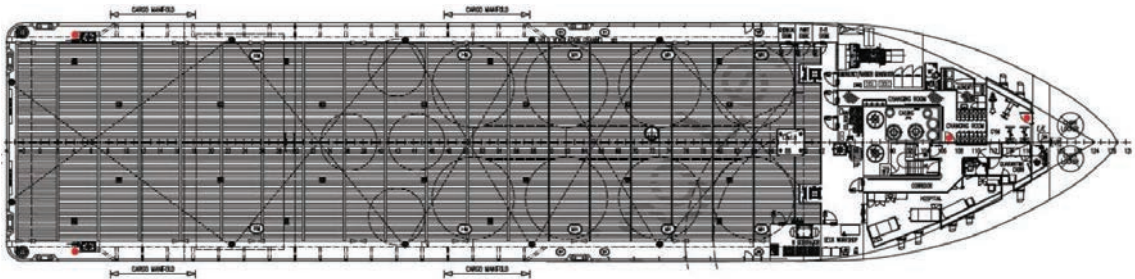
Tanks	Volume capacity m <sup>3</sup>	Ballast water 1.025	Fresh water 1.000	Fuel oil 0.870	Drill water 1.025	Liquid mud 2.400	Base oil 0.870	Methanol 0.790	Dry bulk 2.160	Lub oil 0.920
WB FOREPEAK	116.34	119.25			119.25					
WB TK 1 PS	60.00	61.49			61.49					
WB TK 1 SB	60.00	61.49			61.49					
WB TK 2 PS	47.66	48.85			48.85					
WB TK 2 SB	44.31	45.41			45.41					
WB TK 3 PS	124.22	127.33			127.33					
WB TK 3 SB	124.22	127.33			127.33					
WK TK 4 PS	127.66	130.85			130.85					
WK TK 4 SB	130.76	134.03			134.03					
WK TK 5 PS	131.13	134.40			134.40					
WK TK 5 SB	131.13	134.4			134.40					
WB TK 6 PS	111.13	113.91			113.91					
WK TK 6 SB	109.08	111.81			111.81					
WB TK 8 PS	12.73	13.05			13.05					
WB TK 8 SB	8.35	8.56			8.56					
WB TK 9 AFTERPEAK	44.45	45.56			45.56					
FW TK 1 PS	67.18		67.18							
FW TK 2 SB	65.57		65.57							
FW TK 2 C	98.65		98.65							
FW TK 3 PS	88.12		88.12							
FW TK 3 SB	88.12		88.12							
FW TK 3 C	53.20		53.30							
FW TK 4 PS	164.85		164.85							
FW TK 4 SB	164.85		164.85							
FW / BW TK 7 ROLL DAMP	118.54		118.54							
FO SETTLING TK PS	22.38			19.47						
FO SETTLING TK SB	22.38			19.47						
FO DAY TK PS	19.07			16.59						
FO DAY TK SB	19.07			16.59						
FO TK 1 PS	74.17			64.53						
FO TK 1 SB	74.17			64.53						
FO TK 2 PS	74.17			64.53						
FO TK 2 SB	74.17			64.53						
FO TK 2 CL	80.02			69.61						
FO TK 3 PS	74.26			64.60						
FO TK 3 SB	74.26			64.60						
FO TK 5 PS	32.81			28.55						
FO TK 5 SB	32.81			28.55						
FO TK 5 C	54.68			47.58						
LM TK 1 PS	132.82					318.76				
LM TK 1 SB	132.82					318.76				
LM TK 2 PS	132.82					318.76				
LM TK 2 SB	132.82					318.76				
LM / NLS / FO TK 3 PS	132.82					318.76				
LM / NLS / FO TK 3 SB	132.82					318.76				
LM / NLS / FO / RO TK 4 PS	132.82					318.76				
LM / NLS / FO / RO TK 4 SB	132.82					318.76				
BO TK 1 CL	110.07						95.76			
BO TK 2 CL	97.80						85.08			
METHANOL TK PS	101.38							80.09		
METHANOL TK SB	101.38							80.09		
DRY BULK TK 1 C	65.00								140.40	
DRY BULK TK 1 PS	60.00								129.60	
DRY BULK TK 1 SB	60.00								129.60	
DRY BULK 2 C	45.00								97.20	
LO TK 1	4.16									3.83
LO TK 2	4.38									4.03
<b>Total weight</b>		<b>1417.72</b>	<b>909.18</b>	<b>814.89</b>	<b>1417.72</b>	<b>2550.10</b>	<b>180.84</b>	<b>160.19</b>	<b>496.86</b>	<b>7.86</b>
<b>Total volume</b>		<b>1383.15</b>	<b>909.18</b>	<b>936.65</b>	<b>1383.15</b>	<b>1062.54</b>	<b>207.87</b>	<b>202.77</b>	<b>230.00</b>	<b>8.54</b>

All figures shown are based on tank volume at 100% filling

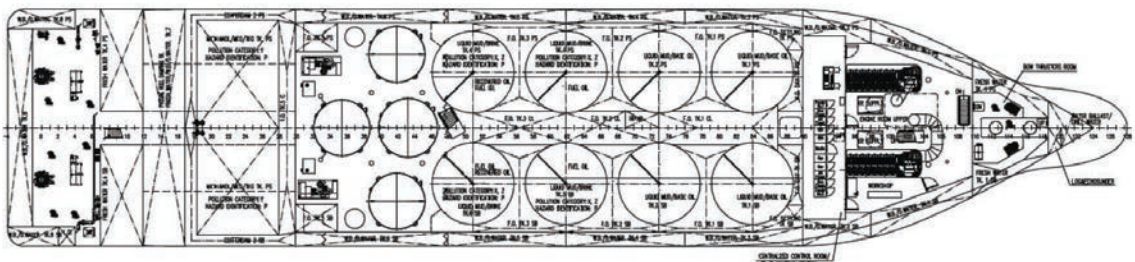
Outboard profile



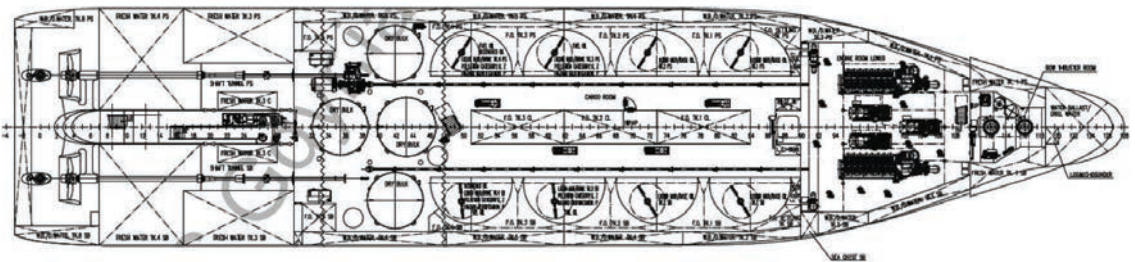
A-deck



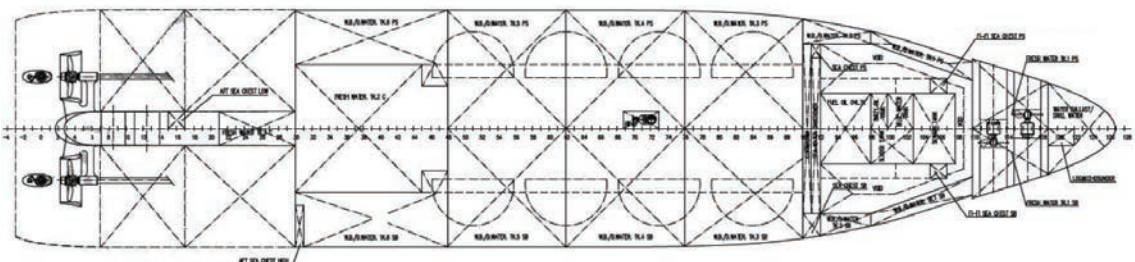
Tween deck



Tank top



Below tank top



## CONTACT

Commercial Department  
Topaz Energy and Marine  
Level 58, Almas Tower, Jumeirah Lakes Towers  
P.O. Box 282800, Dubai, UAE  
Tel +971 4 440 47 00  
Fax +971 4 440 47 99  
Email [marketing.topaz@topaz-marine.com](mailto:marketing.topaz@topaz-marine.com)

## TOPAZ MARINE CASPIAN

BUE Caspian Ltd.  
3<sup>rd</sup> Floor, Gurban Khalilov Street 3  
Baku AZ1006 Azerbaijan  
Tel +994 124 97 87 87  
Fax +994 124 97 25 96  
Email [topazmarine.azn@topaz-marine.com](mailto:topazmarine.azn@topaz-marine.com)

Topaz Marine Kazakhstan  
BUE Kazakhstan Limited  
2<sup>nd</sup> Floor, Building 80, Micro Region 14  
P.O. Box 130000, Aktau, Republic of Kazakhstan  
Tel +7 7292 42 82 72  
Fax +7 7292 42 82 77  
Email [tmkzh.aktauoffice@topaz-marine.com](mailto:tmkzh.aktauoffice@topaz-marine.com)

Topaz Asktrakhan Limited  
7, Turgeneva srt, 2<sup>nd</sup> Floor  
Astrakhan, Russia  
Tel +7 8512 23 80 72  
Fax +7 8512 23 80 72  
Email [topaz.astr@topaz-marine.com](mailto:topaz.astr@topaz-marine.com)

## TOPAZ MARINE GLOBAL

Nico Middle East Ltd.  
P.O. Box 261005, Building 33, Oilfields Supply Centre  
Jebel Ali Free Zone, Dubai, UAE  
Tel +971 4 883 29 29  
Fax +971 4 883 29 59  
Email [marketing.global@topaz-marine.com](mailto:marketing.global@topaz-marine.com)

## TOPAZ MARINE MENA

Doha Marine Services WWL  
P.O. Box 37102, 4<sup>th</sup> Floor, Faisaliyah Building,  
Suhaim Bin Hamad Street, Al Sadd Area  
Doha, State of Qatar  
Tel +974 4410 48 00  
Fax +974 4447 94 73  
Email [marketing.mena@topaz-marine.com](mailto:marketing.mena@topaz-marine.com)

Topaz Marine Saudi Arabia Co. Ltd.  
Office 902, 9<sup>th</sup> Floor, Al Jarbou Tower, Dharan Street  
P.O. Box 4905, Al Khobar 31952  
Kingdom of Saudi Arabia  
Tel +966 13 835 36 30  
Fax +966 13 833 41 58  
Email [saudi.arabia@topaz-marine.com](mailto:saudi.arabia@topaz-marine.com)