

Topaz Glory

59 M - 5150 BHP - FIFI 1 - AHTSV

Vessel Specifications

TOPAZ
MARINE



Vessel Specifications



General

Vessel type	Anchor-handling tug / supply vessel
Year built / builder	2010 / Fujian Funing Shipbuilding Co., Ltd., China
Classification	ABS + A1(E) offshore support vessel, firefighting vessel class 1 + AMS + DPS-1
Flag	Marshall Islands
Call sign	V7TN2
IMO	9560297
MMSI	538003836
INM-C Telex	453835144, 453835145
Trane & Trane Tel	+870 77 3183039
Fax	+130 18 1300464
Email	topazglory@gtships.com
GRT / NRT	1678 / 503
Light ship weight	1539.339 t
Displacement at sum. draught	2899.3 t
Deadweight	1359.966 t

Dimensions

LOA x beam x depth moulded	59.25 x 14.95 x 6.1
Moulded draft	4.95
Clear deck space	350 m ² approx.
Maximum loading rate	7.5 mt / m ²
Maximum cargo capacity	500 t

Bunker capacities

Fuel oil	528.0 m ³ (100%)
Freshwater	374.84 m ³
Drill water / water ballast	396.3 m ³
Mud	413.7 m ³
Cement	186.88 m ³
Fuel oil cargo pump	Azcue BT-DG 110T-F 150 m ³ / hr, 75 kW
Fuel oil meter	Load / discharge metre fitted
Freshwater cargo pump	Azcue VM-ER-80-26 100 m ³ / hr, 37 kW
Freshwater meter	Load / discharge metre fitted
Drill water pump	Azcue VM-ER 80 / 26 100 m ³ / hr, 37 kW
Bilge / ballast pump	2 x Azcue CA 100 / 80-30A 75 / m ³ hr, 0.4 Mpa
Mud pump	2 x PKD capacity 70 m ³ / hr, 95 kW
Cement compressor	2 x SWS75S-57 actual free-air delivery - 13.0 ± 5% m ³ / min normal operating press 0.59 Mpa
Refrigerated storage	Cooler + freezer approx. 8 m ³



Navigation / communication equipment

GMDSS	Fitted - Area 1, 2, 3 (worldwide compliant)
Radar(s)	1 x Furuno FAR-2117, 1 x Furuno FR-1510MK3
ARPA radar	Furuno FAR-2117
AIS	Furuno FA-150
EPIRB	McMurdo E5
Radar transponders	2 x McMurdo S4
ECDIS	To be fitted
Radio(s)	
VHF	2 x DSC Furuno FM-8800S
SSB / NBDP	1 x DSC Furuno FS-2570
Handheld emergency GMDSS VHF	3 x McMurdo R2 GMDSS
Compasses	
Standard	MC-18
Gyro	SPERRY GC-80
Autopilot	SIMRAD AP-50 PILUS
Weather facsimile	Furuno FAX-408
Navtex	Furuno NX-700B
GPS	Furuno GP-150
Wind anemometer	RM-YOUNG
Echo sounder	Furuno FE-700
Speed log	Furuno DS-80
Searchlight	1 forward + 2 aft
Standard reflector binnacle	Saracom Co. Ltd. BC-180

Fire / lifesaving equipment

Off-ship fire fighting pump	2 x FS SFP250 x 350 1650 m ³ / h, 743 kW
Foam tank	13.31 m ³
GS fire pump	Azcue CA 100 / 80-30 75 m ³ / hr, 22 kW
Emergency fire pump	Azcue CA 80 / 15-A 25 m ³ / h
Fire monitors	1FFS 1200 LB + 1 x FFS 1200 / 300 LB
Fire alarm system	TYCO-0837
Life rafts	KHA-25 6 pcs x 25 persons
Lifesaving	To meet SOLAS requirements
EPIRB & radar transponders	Fitted
Rescue boat	WJ45KR 4.5 x 1.86 x 0.85 m; engine type: Mercury, 25 HP; capacity - 6 person
Rescue boat launching davit	Wuxi Dongwu 09TD619; 21 kN / 3.75 m
Rescue zones	5 m wide and fitted in FWD end of main deck

Anti-pollution equipment

Detergent tank	13.31 m ³
----------------	----------------------

Additional features

Sewage treatment plant	WCB 50
Water maker	SW-Y 30 / 52 5200 litres / day



Propulsion machinery

Main engines	2 x Caterpillar 3516B-HD 2575 bhp, 1600 rpm
Total ME power	5150 bhp
Bollard pull	63.8 t
Bow thruster	Kamome Propeller Co. TCB-70DSMA, 388 kW
Propellers	2 x BCP690 diametre 2650 mm
Generators	3 x Caterpillar C18 / SR4B (350 kW each) 1 Em. Generator Perkins Sabre 4.4 GM / CAT4.4 49.1 kWt
Full service speed	13 knots
Economical speed	12.5 knots @ approx. 14 mt per day
Endurance	35 days approx.
Fuel oil purifier	Mitsubishi SJ10G

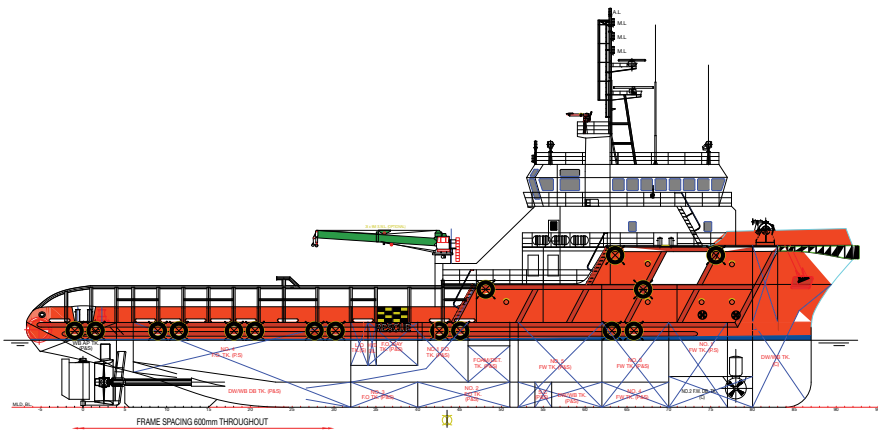
Deck equipment / mooring system

Hydraulic anchor-handling / towing winch	Plimsoll PC-AHTW / WF-150 / 200 hydraulic winch Pull capacity: 150 tonnes x 0~6 m / min (1 st layer, 1 st speed) 75 tonnes x 0~12 m / min (1 st layer, 2 nd speed) 25 tonnes x 0~36 m / min (1 st layer, 3 rd speed) Dynamic lowering: 25 tonnes x 0~36 m / min Brake holding: 200 tonnes (static, 1 st layer) Drum capacity: 1000 m x 56 mm SWR
Anchor windlass	MacGregor Plimsoll PC-HAW / GG-38U2 Duty pull: 9.0 t x 12 m / min Brake holding: 37.3 tonnes (static)
Towing pins & hydraulic shark jaws	PC-PS-200SJTA safe working load: 200 tonnes
Hydraulic tugger winch	PC-HUW10UR-400 2 x single drum, 15 tonnes break holding, capacity 10 tonnes x 15 m / min, 200 m x 20 mm diametre
Hydraulic vertical capstan	2 capstan PC-HVC-05; 5 t x 15 m / min head diametre - 400 mm
Fendering	Side - fully fendered Bow - fully fendered
Crane	YSQ 1250-3 t / 9 m hydraulic telescopic crane
Anchors	2 cast steel AC-14, 1 x 1320 kgs, 1 x 1330 kgs
Anchor chain	2 x 8 shackles (each 27.5 m), 38 mm diametre, grade 2a stud link chain
Hydraulic storage reel winch	PC-HCW / SD-05 rated pull: 5 t x 30 m / min (1 st layer) Drum capacity: 1000 m x diametre 56 mm SWR

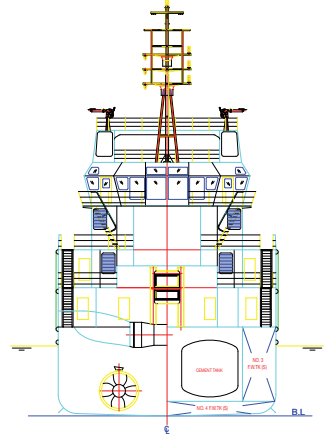
Accommodation

Fully air-conditioned	Fitted
Cabins	4 x 1 berth, 3 x 2 berths, 8 x 4 berths
Total berths	42

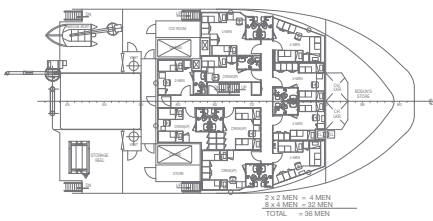
GA Specifications



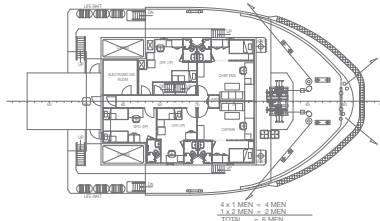
Outboard profile



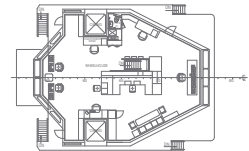
Front view



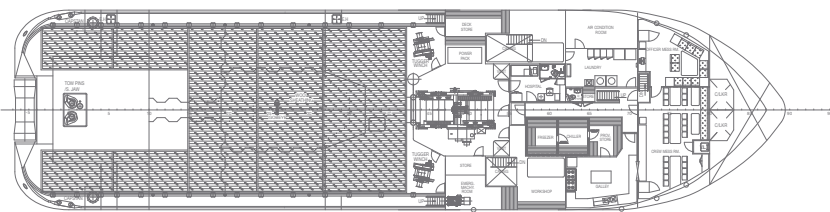
Forecastle deck



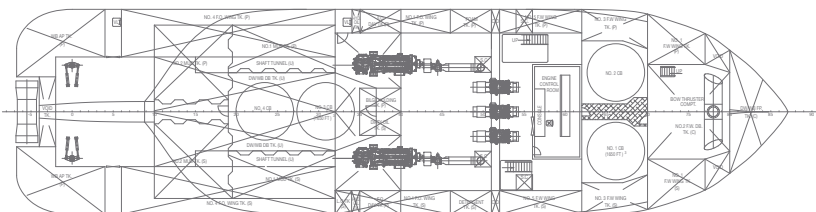
Upper forecastle deck



Bridge deck



Main deck



Below deck

Principal dimensions

Length (O.A.)	59.250 m
Length (W.L.)	56.000 m
Length (B.P.)	52.200 m
Beam (Mld.)	14.950 m
Depth (Mld.)	6.100 m
Design draft	4.950 m
Fuel oil	540 m ³
Freshwater	360 m ³
Drill water / W.B.	400 m ³
Mud	400 m ³
Clear deck area	340 m ²
Deck cargo	500 tonnes
(Deck loading = 7.5 t / m ²)	
Dry bulk tanks (4 x 1650 ft)	187 m ³
Main propulsion engine	2 x 2575 bhp
Speed (trials)	13.0 knots
Bollard pull	63.8 tonnes
Complement	60 tonnes

Class and notation:

ABS A1 E "offshore support vessel, Fire Fighting vessel class 1" + AMS + DPS-1

Topaz Marine Turkmenistan
33 Archabil Avenue
Hotel Azatlyk (Independent)
Ashgabat City, Turkmenistan
Tel +993 12 4887 04
Fax +993 12 4887 04
Email tomasz.maczka@topaz-marine.com