

Islay

75 M - 14790 BHP - Anchor Handling Tug Supply Vessel

Vessel Specifications



Vessel Specifications

General

Class	DNV +1A1 Tug Supply Vessel SF EO DK (+) HL (2.5)
Year of build	2002
Place of build	BAE Systems Marine, Glasgow, UK
Port of registry	Baku
Flag	Azerbaijan
Call sign	4JME
IMO number	9246073

Dimensions

Length overall	74.75 m
Length between perpendicular	67.59 m
Breadth moulded	16.0 m
Depth moulded	7.6 m
Draft summer / scantling	6.48 m
Deadweight	2665 t
Net registered tonnage	832 t
Gross tonnage	2544 t

Machinery

Main engines	2 x Wartsila 5515 kw (11030 kw)
Main generators (shaft driven)	2 x 1560 kw / 440 v / 3 ph / 60 hz
Main generators (diesel driven)	2 x 315 kw / 440 v / 3 ph / 60 hz
Emergency generator	1 x 100 kw / 440 v / 3 ph / 60 hz
Bow thruster	2 x 735 kw CPP tunnel
Stern thruster	1 x 735 kw CPP tunnel
Propulsion	2 x CPP (in nozzles)
Rudders	Ulstein high lift rudder (HLR) Type: HLR 2000
Steering gear	Tennfjord / Rolls-Royce Marine

Deck Crane

Manufacturer	1 x TTS-Norlift AS
SWL and radius	5 t x 11 m / 2.5 t x 15.5 m
Location	Forward main deck

Ancillary equipment

Sewage treatment plant	Super Trident ST2A / Hamworthy / UK
Oily water separator	Hamworthy / UK, 98013 733

Performance

Maximum speed / consumption	16 knots / 51 t
Economical speed / consumption	10 knots / 12 t
Consumption at 100% MCR	51 t
Bollard pull	170 t

Capacities

Fuel oil	853 m ³
Potable water	564 m ³
Ballast / drill water	491 m ³ / 132 m ³
Liquid mud / base oil	2692 bbls / 809 bbls
Brine	3367 bbls
Dry bulk tanks	8550 ft ³
Deck cargo capacity	600 t
Deck strength	5 t per m ²
Clear deck area	381 m ² / 28 m x 13 m

Transfer Rates

Fuel	150 m ³
Freshwater	100 m ³
Drill water / ballast water	150 m ³
Liquid mud / brine	100 m ³
Base oil	100 m ³
Bulk cement	80 t per hr
Bilge / ballast	60 / 40 m ³
GS / fire pump	65 m ³

Vessel Specifications

Mooring Equipment

Anchor windlass	Brattvaag / Rolls-Royce 25 t
Bow anchors	2 x Pool TW
Chains	42 mm K3
Capstan	2 x 10 t

Towing and anchor handling equipment

Towing / AH winch	BSL 380W / 2SL 380W
Wire capacity	1880 m x 76 mm
Rated pull (1 st layer)	380 t
Brake holding	550 t 1 st wrap
Wire rope storage reel	Brattvaag / Rolls-Royce, ALM 4160 U
Rig chain locker no. x capacity	4 x 103 m ³
Stern roller	SWL 500 t / 5 m x 3 m
Shark jaws	Karm Fork MBL 750 t
Towing pins	2 x MBL 240 t
Tugger winch	2 x 12 t
Bow fendering	No

Communication and navigation equipment

GMDSS station	Area 3
Satcom and type	Inmarsat B
SSB	Sailor RM2152
AIS	Furuno FA-150
EPIRB	Tron 40S
Radar transponder	Jontron SART 20
Two-way portable VHF / UHF	4 x ICOM M710
Navtex receiver	JRC NCR 330
DP system	Joystick Simrad SJ01
Radar 1	Furuno FR-2115
Radar 2	Furuno FR-2115
Gyro compass	Anshultz 22
Auto pilot	Robertson AP9 mk3
GPS receiver	Furuno Shipmate GN30
Echo sounder	Furuno FE-700
Doppler speed log	JRC JLN 203
Anemometer	Yes

Fire fighting and anti-pollution equipment

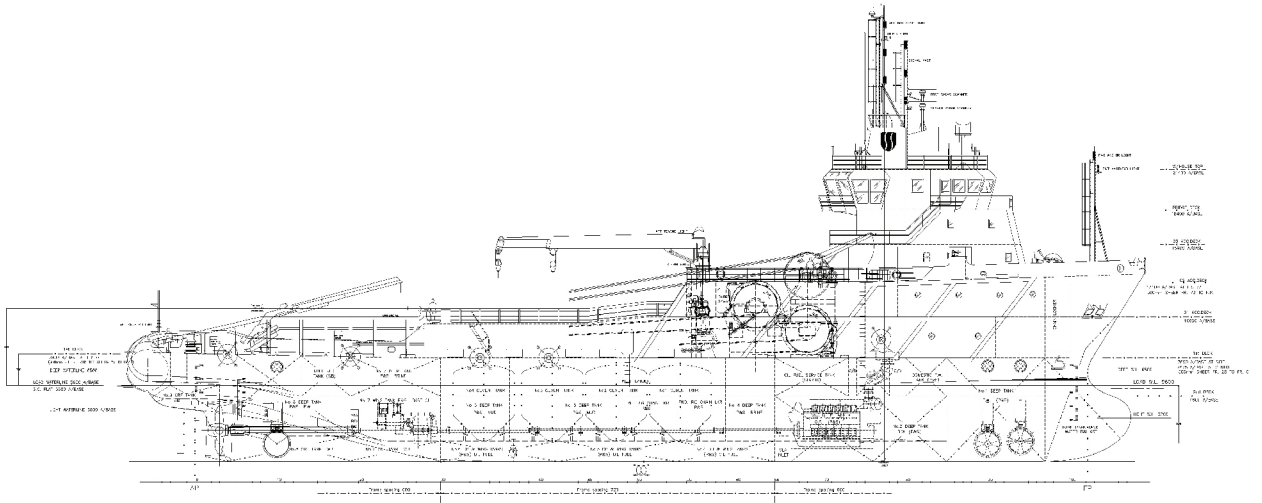
Oil dispersant system	Yes
Oil dispersant storage tank	Yes
Emergency fire pump	45 m ³ x 60 m
Locker with fireman's outfit	2
Portable FIFI appliances	32 x fire extinguishers
CO ² system for engine room	Yes

Safety equipment

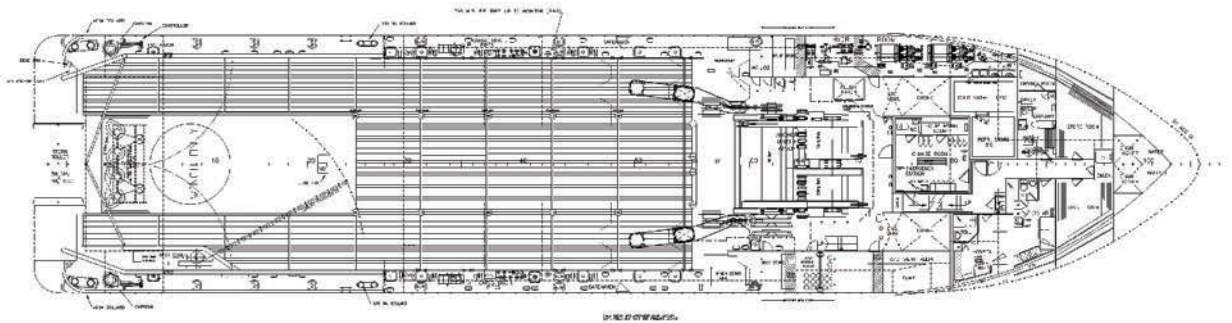
Life rafts	4 x 25 men
Fast rescue boat	1 x Avon Searider SR6
Rescue boat davit	Grampian Hydraulics, GD2 Davit 3.5 t
Life buoys	8
Life jackets	37
Immersion suits	26
Embarkation ladder	1

Accommodation

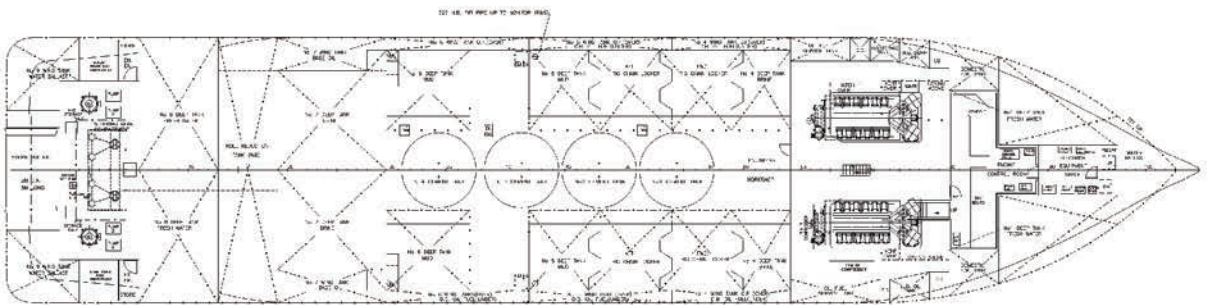
Max per LSA	33
1 berth cabins	8
2 berth cabins	5
Sick bay / hospital	Yes



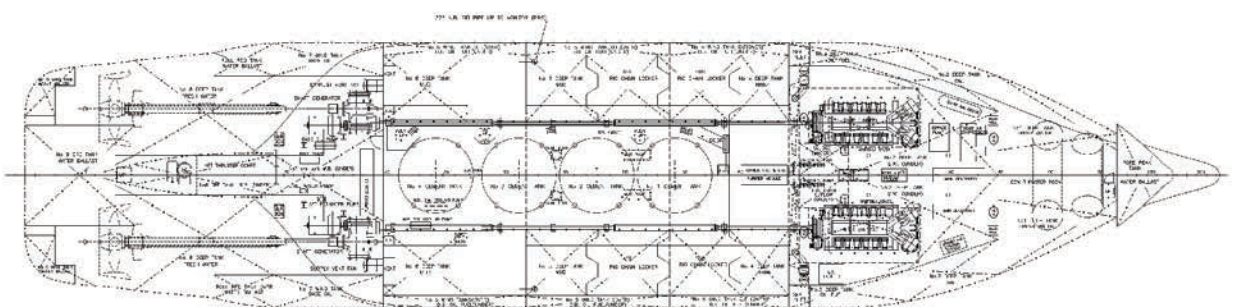
Profile



1st deck



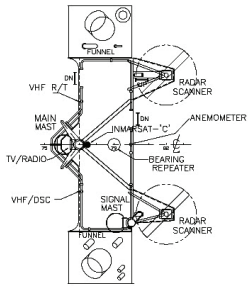
2nd deck



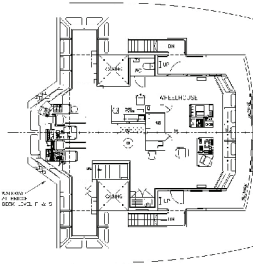
Tank top



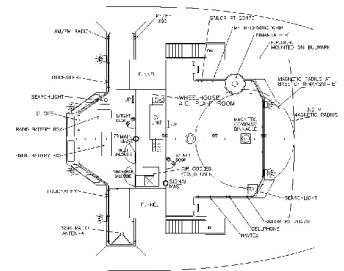
GA Specifications



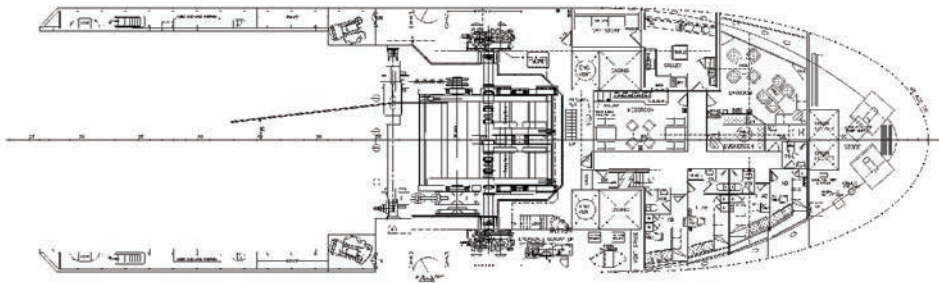
Mast platform



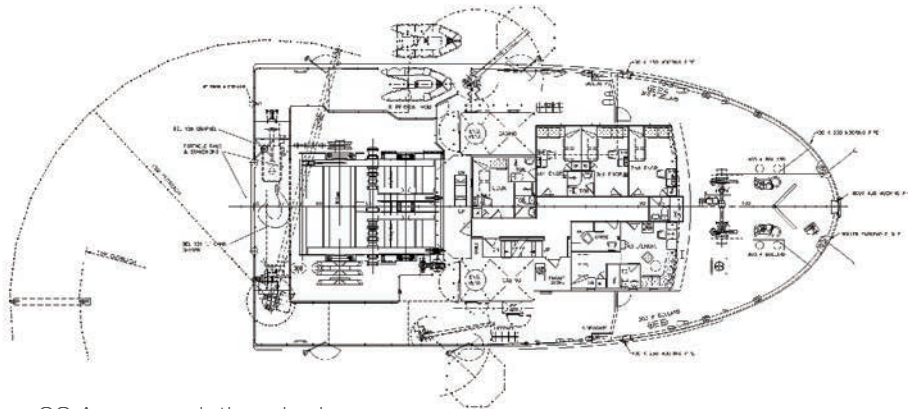
Bridge deck



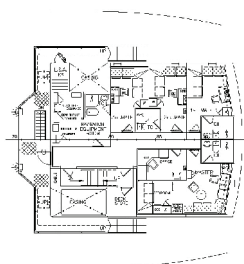
Top wheelhouse



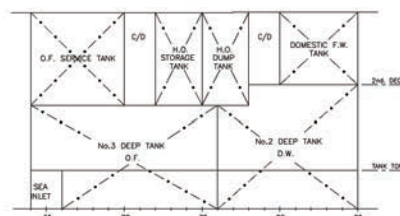
01 Accomodation deck



02 Accomodation deck



03 Accomodation deck



Port side tank arrangement

CONTACT

Commercial Department
Topaz Energy and Marine
Level 58, Almas Tower, Jumeirah Lakes Towers
P.O. Box 282800, Dubai, UAE
Tel +971 4 440 47 00
Fax +971 4 440 47 99
Email marketing.topaz@topaz-marine.com

Topaz Marine Divisional Office
Nico Middle East Ltd.
P.O. Box 261005, Building 33
Oilfields Supply Centre
Jebel Ali Free Zone, Dubai, UAE
Tel +971 4 883 29 29
Fax +971 4 883 29 59
Email marketing.mena@topaz-marine.com

Topaz Marine Azerbaijan
BUE Caspian Ltd.
3rd Floor, Gurban Khalilov Street 3
Yasamat District, Baku
AZ1006 Azerbaijan
Tel +994 124 97 87 87
Fax +994 124 97 25 96
Email topazmarine.azn@topaz-marine.com

Topaz Marine Kazakhstan
BUE Kazakhstan Limited
1st Floor, 36A, Vystavochniy Business Center
14 Micro Region, Aktau
130000 Kazakhstan
Tel +772 92 42 82 72
Fax +772 92 42 82 77
Email tmkzh.aktauoffice@topaz-marine.com

Topaz Marine MENA
Doha Marine Services WWL
P.O. Box 37102, 4th Floor, Faisaliyah Building
Suhaim Bin Hamad Street, Al Sadd Area
Doha, State of Qatar
Tel +974 4410 48 00
Fax +974 4447 94 73
Email marketing.mena@topaz-marine.com