

# Caspian Supporter

72.5 M - 12069 BHP - Anchor Handling Tug Supply Vessel

Vessel Specifications

**TOPAZ**  
MARINE



# Vessel Specifications

## General

Class	ABS +A1 Towing Vessel, FFC 1, Offshore Support Vessel AH, (E), AMS, DPS-2
Year of build	2010
Place of build	Fujian Southeast Shipyard, China
Flag	Azerbaijan
Port of registry	Baku
Call sign	4JOD
IMO number	9534224

## Dimensions

Length overall	72.5 m
Length between perpendicular	64.8 m
Breadth moulded	17 m
Depth moulded	7.5 m
Draft summer / scantling	6 m / 6.6 m
Deadweight	2946.9 t
Net registered tonnage	876 t
Gross tonnage	2921 t

## Machinery

Main engines	2 x Bergen 4500 kw (9000 kw)
Main generators (shaft driven)	2 x 1750 kw / 440 v / 3 ph / 60 hz, Make: Rolls Royce
Main generators (diesel driven)	2 x 590 kw / 450 v / 3 ph / 60 hz, Make: Caterpillar 3412
Emergency generator	98.6 kw / 440 v / 3 ph / 60 hz, Make: Caterpillar C4.4
Bow thruster	1 x CPP tunnel 11 t thrust, 1 x retractable azimuth 13.5 t thrust Make: Ulstein / Kamewa
Stern thruster	1 x CPP tunnel 11 t thrust, Make: Ulstein / Kamewa
Propulsion	2 x CPP (in nozzles)
Rudders	Becker high lift S-A 050 / 253 F.2
Steering gear	Nufoss

## Deck Crane

Manufacturer	TTS Bohai Mach, GPT 150
SWL and radius	7.5 t x 5 m, 5 t x 15 m
Location	Port shoulder

## Ancillary equipment

Sewage treatment plant	Super Trident ST4A Hamworthy / UK
Oily water separator	Ocean Clean, MEPC 107
Liquid mud agitator	Power & Motion Ind.

## Performance

Maximum speed / consumption	14 knots / 28 t
Economical speed / consumption	10 knots / 14 t
Consumption at 100% MCR	28 t
Bollard pull	152 t

## Capacities

Fuel oil	1150 m <sup>3</sup>
Potable water	760 m <sup>3</sup>
Ballast / drill water	600 m <sup>3</sup>
Liquid mud / base oil	750 m <sup>3</sup>
Brine	285 m <sup>3</sup> (in rig chain lockers)
Dry bulk tanks	10800 ft <sup>3</sup>
Deck strength	5.5 t per m <sup>2</sup>
Clear deck area m <sup>2</sup>	510 m <sup>2</sup>
Clear deck area max L X B	34 m x 15 m

## Transfer Rates

Fuel	150 m <sup>3</sup>
Freshwater	150 m <sup>3</sup>
Drill water / ballast water	150 m <sup>3</sup>
Liquid mud / brine	150 m <sup>3</sup>
Bulk cement	80 t per hr
Bilge / ballast	150 m <sup>3</sup>
GS / fire pump	65 m <sup>3</sup>

# Vessel Specifications

## Towing and anchor handling equipment

Towing / AH winch	Brattvaag 350T double drum
Wire capacity	3500 m x 76 mm
Rated pull (1 <sup>st</sup> layer)	350 t
Brake holding	450 t 1st wrap
Wire rope storage reel	2 x 3500 m x 76 mm
Rig chain locker no. x capacity	2 x 143 m
Stern roller	SWL 525 t / 5.5 m x 2.5 m
Shark jaws	Karm Fork
Towing pins	2 sets
Tugger winch	2 x 15 t @ 21 m per min
Bow fendering	No

## Mooring Equipment

Anchor windlass	Brattvaag / Rolls-Royce 25 t
Bow anchors	2 x HHP
Chains	46 mm 2a
Capstan	2 x 10 t

## Communication and navigation equipment

GMDSS station	Area 3, Furuno RC-1800T 250T
Satcom and type	Thrane & Thrane FBB-150 Mini M
SSB	1 x Furuno 250w HF / MF FS-2570
AIS	Furuno FA-150
EPIRB	Mc Murdo E5
Radar Transponder	Mc Murdo S4 Rescue SART
Two-way portable VHF / UHF	ICOM IC-M72
Navtex receiver	Furuno NX-700B
DP system	Converteam DPS-2
Radar 1	2 x Furuno, FAR 2117 x-band 96nm ARPA
Radar 2	Furuno
Gyro compass	2 x Anshultz standard 22
Auto pilot	1 x Anshultz standard 22
GPS receiver	Furuno GPR-150
Echo sounder	1 x Furuno FE-700
Doppler speed log	1 x Furuno DS-80
Anemometer	Yes

## Fire fighting and anti-pollution equipment

FIFI system	FiFi 1
Fire pump	2 x 1650 m per hr @ 14 bar
Monitors	2 x 1200 m per hr water, 300 m per hr foam
Drenching system	Yes
Foam storage tank	22 m <sup>3</sup>
Oil dispersant system	Yes
Oil dispersant storage tank	22 m <sup>3</sup>
Emergency fire pump	75 m <sup>3</sup> x 60 m
Locker with fireman's outfit	1 locker / 6 x firemen outfits
Portable FIFI appliance	51 x fire extinguishers
CO <sub>2</sub> system for engine room	Yes

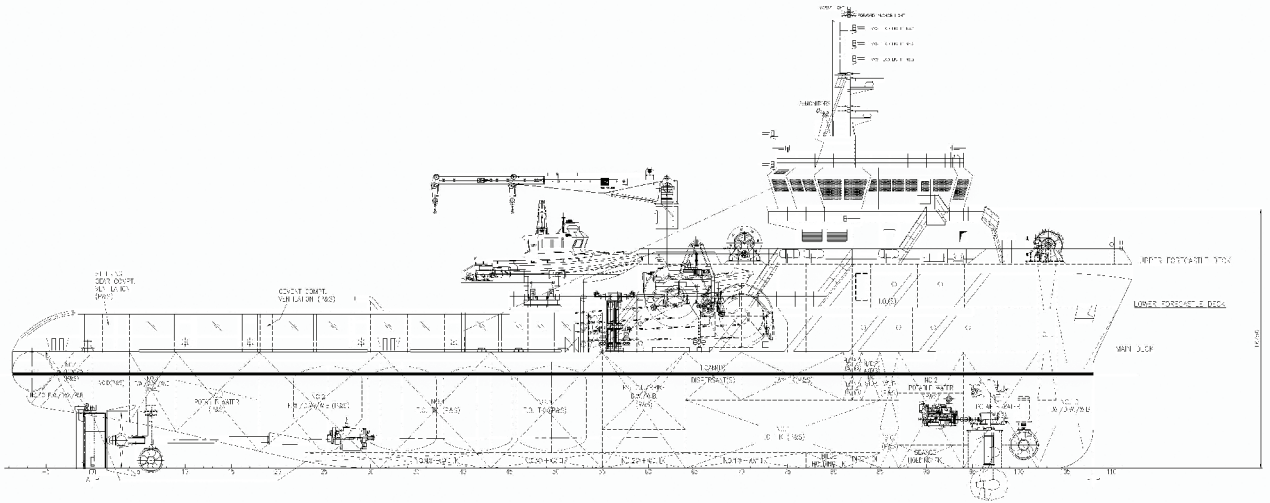
## Safety equipment

Life rafts	6 x 25 men
Fast rescue boat	1 x Seabear 23 MK II
Rescue boat davit	MacGregor
Daughter craft davit	2 x MacGregor DC davits fitted
Life buoys	10
Life jackets	100
Immersion suits	46
Embarkation ladders	3

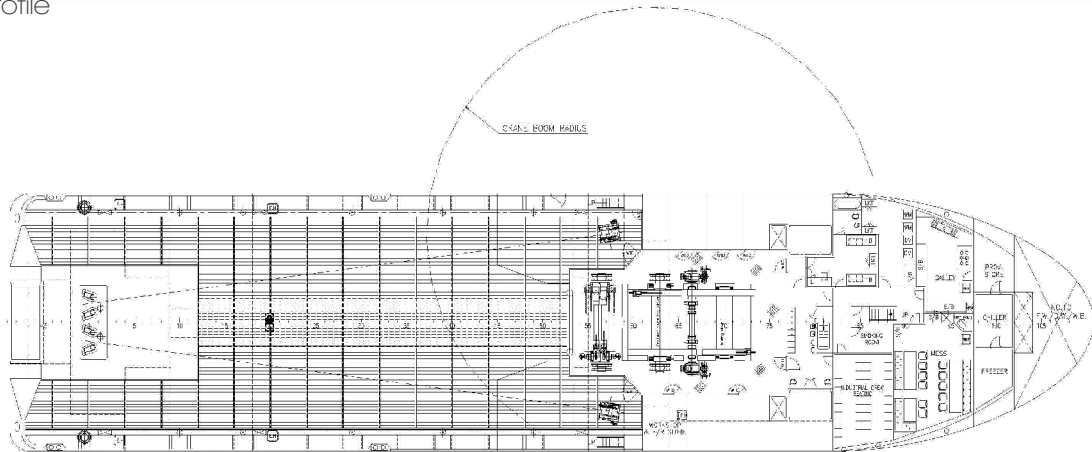
## Accommodation

Max per LSA	48
1 berth cabins	4
2 berth cabins	3
4 berth cabins	10
Sick bay / hospital	Yes

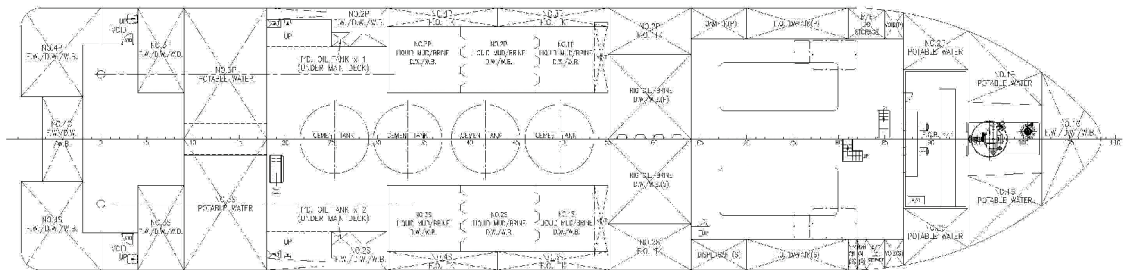
Last revision May 2013



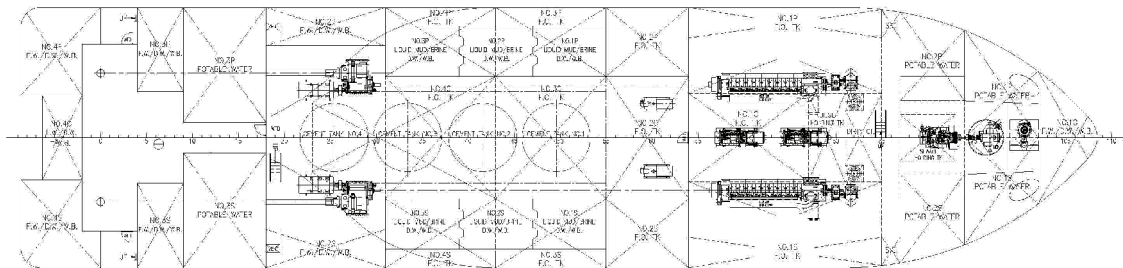
Profile



Main deck

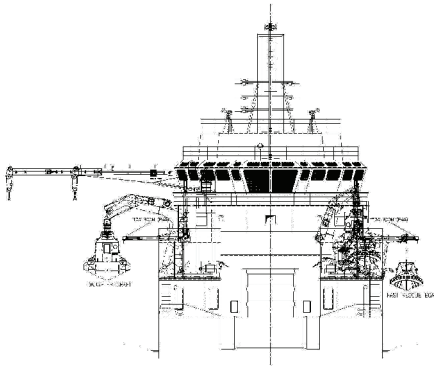


Tween deck

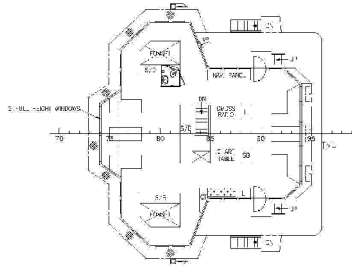


Bottom

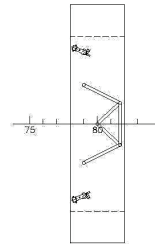




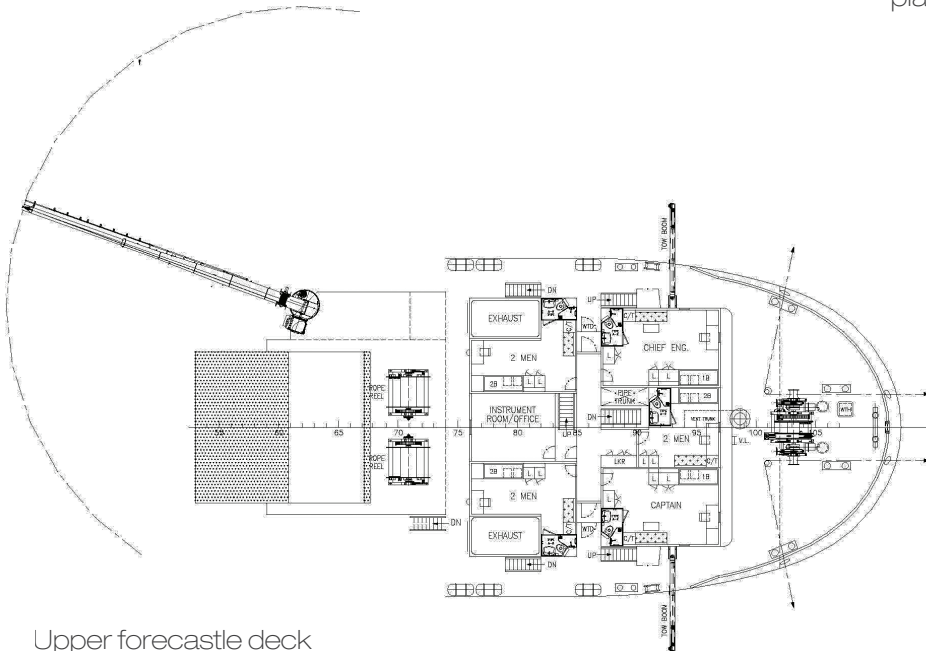
Stern view



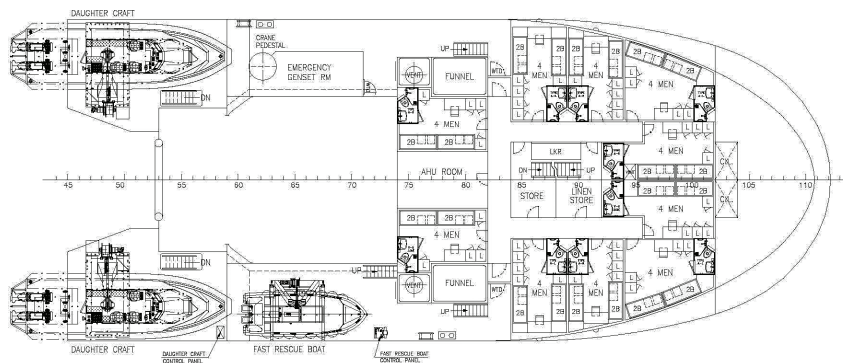
Wheelhouse deck



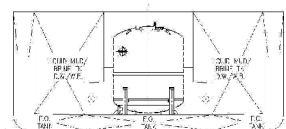
Fire monitor platform



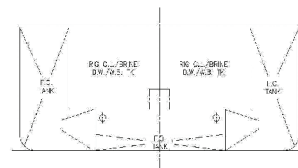
Upper forecastle deck



Lower forecastle deck



Section at cement tank



Section at rig cl

## CONTACT

Commercial Department  
Topaz Energy and Marine  
Level 58, Almas Tower, Jumeirah Lakes Towers  
P.O. Box 282800, Dubai, UAE  
Tel +971 4 440 47 00  
Fax +971 4 440 47 99  
Email [marketing.topaz@topaz-marine.com](mailto:marketing.topaz@topaz-marine.com)

Topaz Marine Divisional Office  
Nico Middle East Ltd.  
P.O. Box 261005, Building 33  
Oilfields Supply Centre  
Jebel Ali Free Zone, Dubai, UAE  
Tel +971 4 883 29 29  
Fax +971 4 883 29 59  
Email [marketing.mena@topaz-marine.com](mailto:marketing.mena@topaz-marine.com)

Topaz Marine Azerbaijan  
BUE Caspian Ltd.  
3<sup>rd</sup> Floor, Gurban Khalilov Street 3  
Yasamat District, Baku  
AZ1006 Azerbaijan  
Tel +994 124 97 87 87  
Fax +994 124 97 25 96  
Email [topazmarine.azn@topaz-marine.com](mailto:topazmarine.azn@topaz-marine.com)

Topaz Marine Kazakhstan  
BUE Kazakhstan Limited  
1<sup>st</sup> Floor, 36A, Vystavochniy Business Center  
14 Micro Region, Aktau  
130000 Kazakhstan  
Tel +772 92 42 82 72  
Fax +772 92 42 82 77  
Email [tmkzh.aktauoffice@topaz-marine.com](mailto:tmkzh.aktauoffice@topaz-marine.com)

Topaz Marine MENA  
Doha Marine Services WWL  
P.O. Box 37102, 4<sup>th</sup> Floor, Faisaliyah Building  
Suhaim Bin Hamad Street, Al Sadd Area  
Doha, State of Qatar  
Tel +974 4410 48 00  
Fax +974 4447 94 73  
Email [marketing.mena@topaz-marine.com](mailto:marketing.mena@topaz-marine.com)