

# Caspian Server

73.6 M - 6250 BHP - DP2 - Platform Supply Vessel

Vessel Specifications

**TOPAZ**  
MARINE



# Vessel Specifications

## General

Type	Platform supply vessel UT755
Flag	Azerbaijan
Class	DNV +1A1-SF-EO-Clean, Conf-V(3) Dk(+), HL (2.8) DYNPOS AUTR
Year of build	2008
Place of build	Simek, Norway
Port of registry	Baku
Call sign	4JNS
IMO number	9411680

## Dimensions

Length overall	73.6 m
Length between perpendicular	67.6 m
Breadth moulded	16 m
Depth moulded	7 m
Draft summer / scantling	5.82 m
Deadweight	3286 t
Net registered tonnage	1030 t
Gross tonnage	2235 t

## Machinery

Main engines	2 x Caterpillar 2300 kw (6250 bhp)
Main generators (shaft driven)	2 x 1800 kw / 440 v / 3 ph / 60 hz
Main generators (diesel driven)	2 x 260 kw / 440 v / 3 ph / 60 hz
Emergency generator	1 x 48 kw / 440 v / 3 ph / 60 hz
Bow thruster	2 x 590 kw CPP tunnel
Stern thruster	2 x 590 kw CPP tunnel
Propulsion	2 x CPP (no nozzles)
Rudders	2 x Ulstein high lift
Steering gear	Tennfjord / -T622

## Ancillary equipment

Sewage treatment plant	DVZ-SKA-20 Services GMBH, Germany
Oily water separator	RWO SKIT / SA-DEB
Liquid mud agitator	RW 5531 / Allweiler
Tank washing system	To 10 mud tanks, 2 slop tanks, 22 machines fitted, 10 bar operating pressure, water heater fitted

## Towing and anchor handling equipment

Tugger winch	2 x 10 t
--------------	----------

## Deck Crane

Manufacturer	1 x ABBAS
SWL and radius	3 t x 16 m
Location	Starboard main deck

## Performance

Maximum speed / consumption	14.4 knots / 22 t
Economical speed / consumption	13 knots / 10 t
Consumption at 100%	MCR 22 t

## Capacities

Fuel oil	869 m <sup>3</sup>
Potable water	800 m <sup>3</sup>
Ballast / drill water	1280 m <sup>3</sup> / 820 m <sup>3</sup>
Liquid mud / base oil	596 m <sup>3</sup> / 202 m <sup>3</sup>
Brine	397 m <sup>3</sup>
Dry bulk tanks	5 tanks ?
Deck cargo capacity	1530 t
Deck strength	5 t per m <sup>2</sup>
Clear deck area m <sup>2</sup>	680 m <sup>2</sup>
Clear deck area max L x B	49.5 m x 13.75 m

# Vessel Specifications

## Transfer Rates

Fuel	200 m <sup>3</sup> per hr @ 9 bar
Freshwater	200 m <sup>3</sup> per hr @ 9 bar
Drill water / ballast water	150 m <sup>3</sup> per hr @ 9 bar
Liquid mud / brine	75 m <sup>3</sup> per hr @ 18 bar
Base oil	150 m <sup>3</sup> per hr @ 9 bar
Bulk cement	80 t per hr
Bilge / ballast	150 m <sup>3</sup> per hr @ 9 bar

---

## Mooring Equipment

Anchor windlass	Brattvaag LB.MGA1038MA
Bow anchors	2 x Speck 2460 kg
Chains	220 m x 38 mm / K3
Capstan	Brattvaag 2 x 8 t

---

## Communication and navigation equipment

GMDSS station	Area 3
Satcom	Sat C Furuno Felcom15
SSB	1 x Furuno FS-2570
AIS	Furuno FA-150
EPIRB	Jutron Tron 40S
Radar transponder	2 x Tron SART
Two-way portable VHF / UHF	4 x UHF Motorola GP 340
Navtex receiver	1 x Navtex NX-700-B
DP system	Rolls-Royce ICON DP2, Rolls-Royce joystick
DP reference systems	2 x Veripos DGPS, 1 x Cyscan laser
Radar 1	1 x Furuno FAR-2137S 10 cm ARPA
Radar 2	1 x Furuno FAR-2117 3 cm
Gyro compass	2 x Anshutz ST 22, 1 x Anshutz ST 21 satellite compass
Auto pilot	1 x Anshultz Pilotstar D
GPS receiver	1 x Furuno GP-150
Echo sounder	1 x Furuno FE-700
Doppler speed log	1 x Furuno DS-80
Anemometer	1 Gill ultrasonic

---

## Fire fighting and anti-pollution equipment

FIFI system	FiFi 1
Fire pump	2 x 1500 m <sup>3</sup> per hr
Monitors	2 x 1200 m <sup>3</sup> per hr
Emergency fire pump	31 m <sup>3</sup> x 60 m
Locker with fireman's outfit	3
Portable FIFI appliances	21 x fire extinguishers, 15 x hoses
CO <sub>2</sub> system for engine room	Yes

---

## Safety equipment

Life rafts	4 x 25 men
Fast rescue boat	1
Rescue boat davit	1
Life buoys	8
Life jackets	27
Immersion suits	27
Embarkation ladders	2

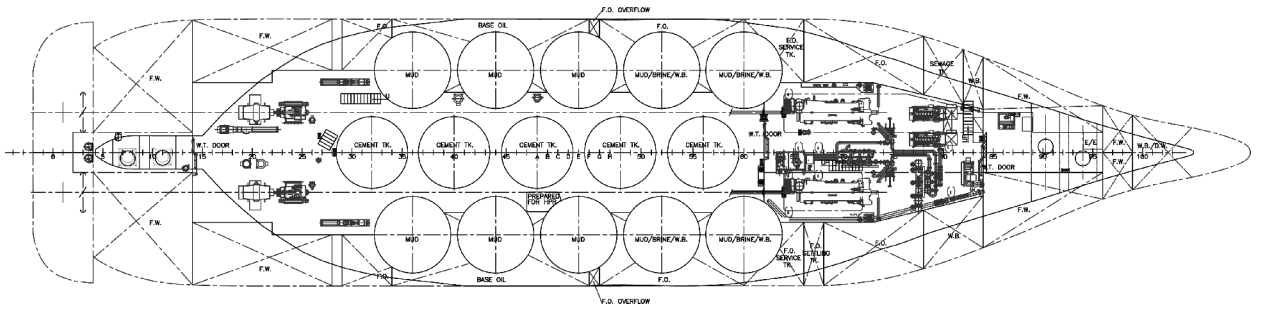
---

## Accommodation

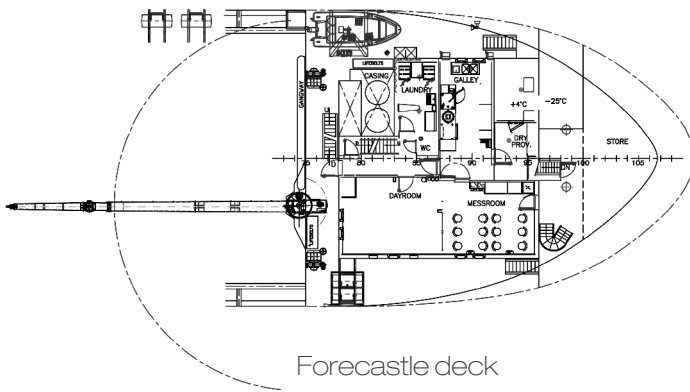
Max per LSA	22
1 berth cabins	10
2 berth cabins	3
4 berth cabins	2
Sick bay / hospital	Yes



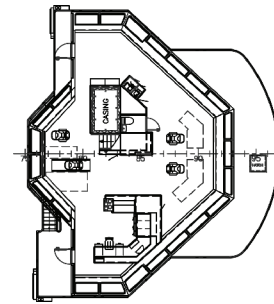
# GA Specifications



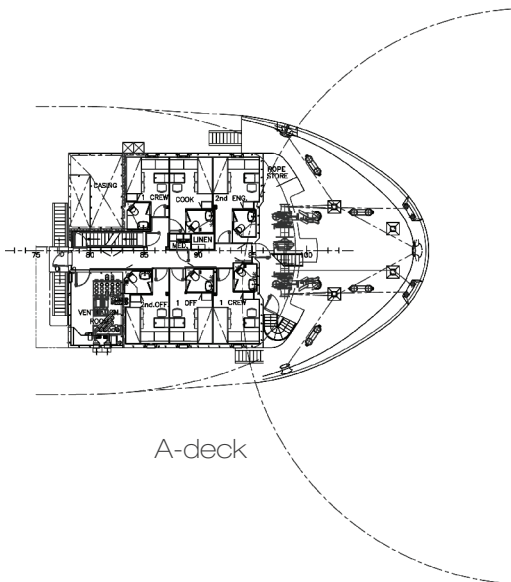
Tank top



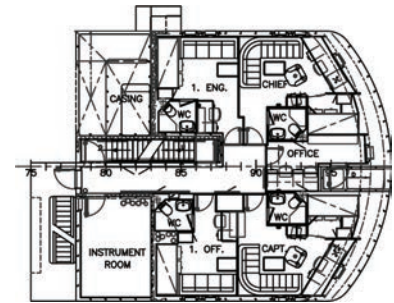
Forecastle deck



Bridge deck



A-deck



B-deck

## CONTACT

Commercial Department  
Topaz Energy and Marine  
Level 58, Almas Tower, Jumeirah Lakes Towers  
P.O. Box 282800, Dubai, UAE  
Tel +971 4 440 47 00  
Fax +971 4 440 47 99  
Email [marketing.topaz@topaz-marine.com](mailto:marketing.topaz@topaz-marine.com)

Topaz Marine Divisional Office  
Nico Middle East Ltd.  
P.O. Box 261005, Building 33  
Oilfields Supply Centre  
Jebel Ali Free Zone, Dubai, UAE  
Tel +971 4 883 29 29  
Fax +971 4 883 29 59  
Email [marketing.mena@topaz-marine.com](mailto:marketing.mena@topaz-marine.com)

Topaz Marine Azerbaijan  
BUE Caspian Ltd.  
3<sup>rd</sup> Floor, Gurban Khalilov Street 3  
Yasamat District, Baku  
AZ1006 Azerbaijan  
Tel +994 124 97 87 87  
Fax +994 124 97 25 96  
Email [topazmarine.azn@topaz-marine.com](mailto:topazmarine.azn@topaz-marine.com)

Topaz Marine Kazakhstan  
BUE Kazakhstan Limited  
1<sup>st</sup> Floor, 36A, Vystavochniy Business Center  
14 Micro Region, Aktau  
130000 Kazakhstan  
Tel +772 92 42 82 72  
Fax +772 92 42 82 77  
Email [tmkzh.aktauoffice@topaz-marine.com](mailto:tmkzh.aktauoffice@topaz-marine.com)

Topaz Marine MENA  
Doha Marine Services WWL  
P.O. Box 37102, 4<sup>th</sup> Floor, Faisaliyah Building  
Suhaim Bin Hamad Street, Al Sadd Area  
Doha, State of Qatar  
Tel +974 4410 48 00  
Fax +974 4447 94 73  
Email [marketing.mena@topaz-marine.com](mailto:marketing.mena@topaz-marine.com)