

# Caspian Qala

73.6 M - 6250 BHP - DP 2 - Platform Supply Vessel

Vessel Specifications

**TOPAZ**  
MARINE



# Vessel Specifications

## General

Type	Platform supply vessel UT755
Flag	Azerbaijan
Class	DNV +1A1-SF-EO-Clean, DYNPOS-AUT, DYNPOS, DP2 AUTR
Year and place of build	2008 / Simek, Norway
Port of registry	Baku
Call sign	4JNJ
IMO number	9418690

## Dimensions

Length overall	73.6 m
Length between perpendicular	67.6 m
Breadth moulded	16 m
Depth moulded	7 m
Draft summer / scantling	5.84 m
Deadweight	3286 t
Net registered tonnage	1030 t
Gross tonnage	2241 t

## Machinery

Main engines	2 x Caterpillar 2300 kw (6250 bhp)
Main generators (shaft driven)	2 x 1800 kw / 440 v / 3 ph / 60 hz
Main generators (diesel driven)	2 x 250 kw / 440 v / 3 ph / 60 hz
Emergency generator	1 x 50 kw
Bow thruster	2 x 590 kw CPP tunnel
Stern thruster	2 x 590 kw CPP tunnel
Propulsion	2 x CPP (no nozzles)
Rudders	2 x Ulstein high lift
Steering gear	Tennfjord / -T622

## Ancillary equipment

Sewage treatment plant	DVZ-SKA-20 / Services GMBH, Germany
Oily water separator	RWO SKIT / SA-DEB
Liquid mud agitator	RW 5531 / Allweiler
Tank washing system	To 10 mud tanks, 2 slop tanks, 22 machines fitted, 10 bar operating pressure, water heater fitted

## Capacities

Fuel oil	950 m <sup>3</sup>
Potable water	800 m <sup>3</sup>
Ballast / drill water	980 m <sup>3</sup>
Liquid mud / base oil	990 m <sup>3</sup> / 200 m <sup>3</sup>
Brine	390 m <sup>3</sup>
Dry bulk tanks	320 m <sup>3</sup>
Deck cargo capacity	1530 t
Deck strength	5 t / m <sup>2</sup>
Clear deck area m <sup>2</sup>	680 m <sup>2</sup>
Clear deck area max L x B	49.5 m x 13.75 m

## Transfer Rates

Fuel	200 m <sup>3</sup> per hr @ 9 bar
Freshwater	200 m <sup>3</sup> per hr @ 9 bar
Drill water / ballast water	200 m <sup>3</sup> per hr @ 9 bar
Liquid mud / brine	75 m <sup>3</sup> per hr @ 18 bar
Base oil	150 m <sup>3</sup> per hr @ 9 bar
Bulk	80 t per hr
Bilge / ballast	150 m <sup>3</sup> per hr @ 9 bar

## Performance

Maximum speed / consumption	14 knots / 16 t
Economical speed / consumption	10 knots / 8 t
Consumption at 100%	MCR 16 t

## Towing and anchor handling equipment

Tugger winch 2 x 10 t

## Mooring Equipment

Anchor windlass Brattvaag LB.MGA1038MA  
 Bow anchors 2 x Speck 2460 kg  
 Chains 220 m x 38 mm / K3  
 Capstan Brattvaag 2 x 8 t

## Deck Crane

Manufacturer 1 x ABBAS  
 SWL and radius 3 t x 16  
 Location Starboard main deck

## Communication and navigation equipment

GMDSS station Area 3  
 Satcom and type Sat C Furuno Felcom15 / Oki ML280  
 SSB 1 x Furuno FS-2570  
 AIS Furuno FA-150  
 EPIRB Jutron Tron 40S  
 Radar transponder 2 x Tron SART 9  
 Two-way portable VHF / UHF 4 x UHF Motorola GP 340  
 Navtex receiver 1 x Navtex NX-700-B  
 DP system Rolls-Royce ICON DP2, Rolls-Royce joystick  
 DP reference systems 2 x Veripos DGPS, 1 x Cyscan Laser  
 Radar 1 1 x Furuno FAR-2137S 10 cm ARPA  
 Radar 2 1 x Furuno FAR-2117 3 cm  
 Gyro compass 2 x Anshultz ST 22, 1 x Anshultz ST 21 satellite compass  
 Auto pilot 1 x Anshultz Pilotstar D  
 GPS receiver Furuno GP-150  
 Echo sounder 1 x Furuno FE-700  
 Doppler speed log Furuno DS-80  
 Anemometer 1 Gill ultrasonic

## Fire fighting and anti-pollution equipment

FIFI system FiFi 1  
 Fire pump 2 x 1500 m<sup>3</sup> per hr  
 Monitors 2 x 1200 m<sup>3</sup> per hr  
 Emergency fire pump 31 m<sup>3</sup> x 60 m  
 Locker with fireman's outfit 3  
 Portable FIFI applicances 21 x fire extinguishers, 15 x hoses  
 CO2 system for engine room Yes

## Safety equipment

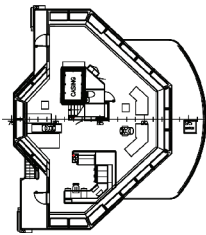
Life rafts 4 x 25 men  
 Fast rescue boat 1  
 Rescue boat davit 1  
 Life buoys 8  
 Life jackets 25  
 Immersion suits 25  
 Embarkation ladders 2

## Accommodation

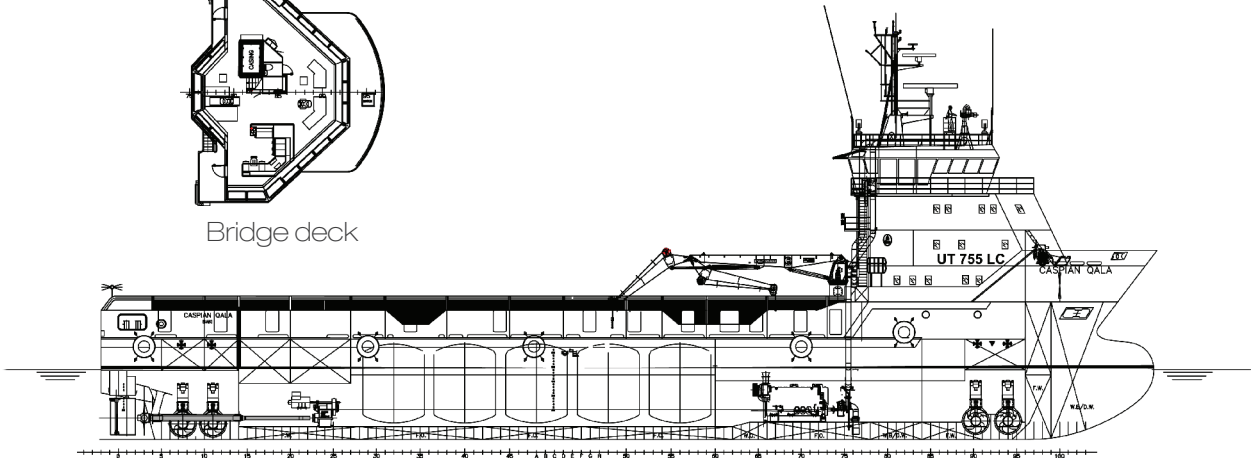
Max per LSA 20  
 1 berth cabins 12  
 2 berth cabins 2  
 4 berth cabins 2  
 Sick bay / hospital Yes



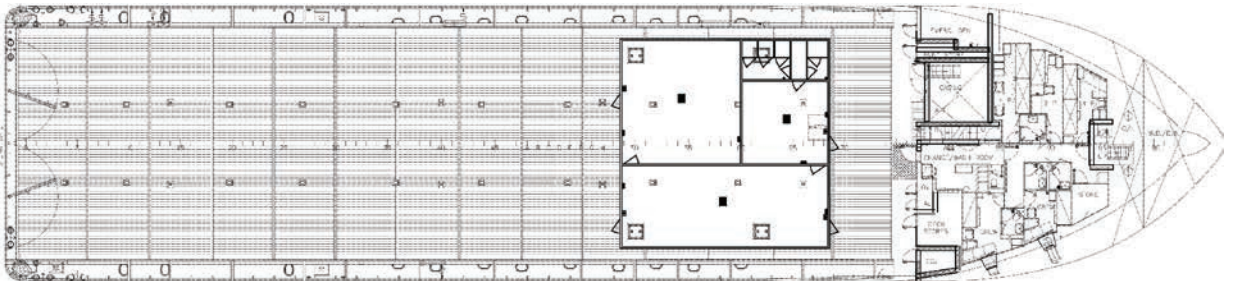
# GA Specifications



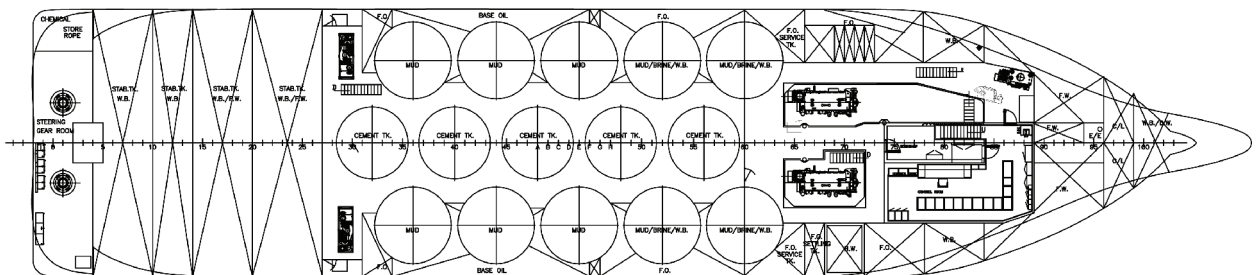
Bridge deck



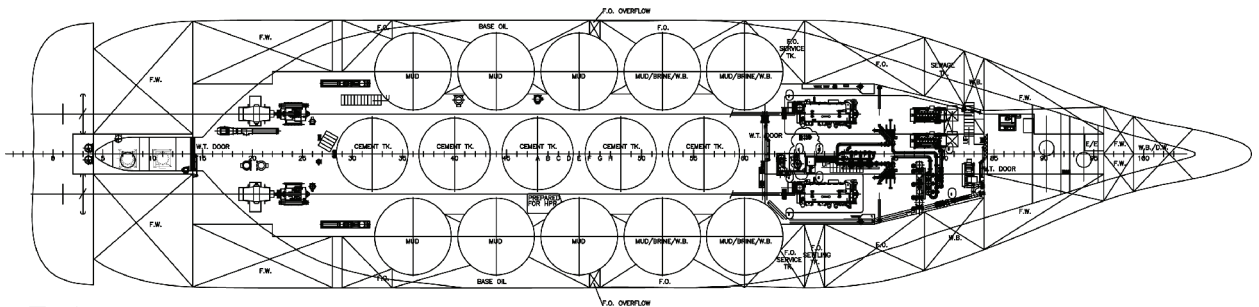
Outboard profile



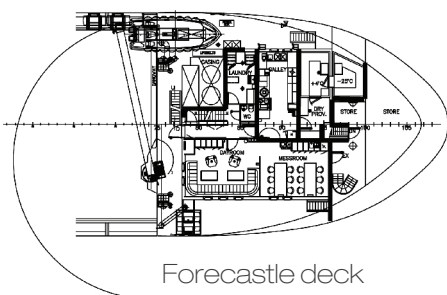
Main deck



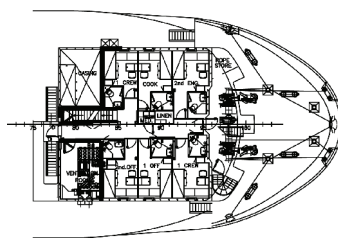
Tween deck



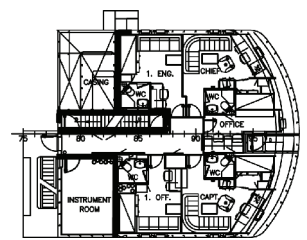
Tank top



Forecastle deck



A-deck



B-deck

## CONTACT

Commercial Department  
Topaz Energy and Marine  
Level 58, Almas Tower, Jumeirah Lakes Towers  
P.O. Box 282800, Dubai, UAE  
Tel +971 4 440 47 00  
Fax +971 4 440 47 99  
Email [marketing.topaz@topaz-marine.com](mailto:marketing.topaz@topaz-marine.com)

Topaz Marine Divisional Office  
Nico Middle East Ltd.  
P.O. Box 261005, Building 33  
Oilfields Supply Centre  
Jebel Ali Free Zone, Dubai, UAE  
Tel +971 4 883 29 29  
Fax +971 4 883 29 59  
Email [marketing.mena@topaz-marine.com](mailto:marketing.mena@topaz-marine.com)

Topaz Marine Azerbaijan  
BUE Caspian Ltd.  
3<sup>rd</sup> Floor, Gurban Khalilov Street 3  
Yasamat District, Baku  
AZ1006 Azerbaijan  
Tel +994 124 97 87 87  
Fax +994 124 97 25 96  
Email [topazmarine.azn@topaz-marine.com](mailto:topazmarine.azn@topaz-marine.com)

Topaz Marine Kazakhstan  
BUE Kazakhstan Limited  
1<sup>st</sup> Floor, 36A, Vystavochniy Business Center  
14 Micro Region, Aktau  
130000 Kazakhstan  
Tel +772 92 42 82 72  
Fax +772 92 42 82 77  
Email [tmkzh.aktauoffice@topaz-marine.com](mailto:tmkzh.aktauoffice@topaz-marine.com)

Topaz Marine MENA  
Doha Marine Services WWL  
P.O. Box 37102, 4<sup>th</sup> Floor, Faisaliyah Building  
Suhaim Bin Hamad Street, Al Sadd Area  
Doha, State of Qatar  
Tel +974 4410 48 00  
Fax +974 4447 94 73  
Email [marketing.mena@topaz-marine.com](mailto:marketing.mena@topaz-marine.com)