

# Caspian Breeze

36M - Crew Boat

Vessel Specifications

**TOPAZ**  
MARINE



# Vessel Specifications

## General

Type	Crewboat
Flag	Azerbaijan
Class	BV special service crew boat
Year of build	2008
Place of build	Damen, Netherlands
Port of registry	Baku
Call sign	4JNK
IMO number	9510735
Owners	Caspian Breeze Ltd

## Dimensions

Length overall	35.95 m
Breadth moulded	7.36 m
Depth moulded	3.3 m
Draft summer / scantling	2.29 m
Deadweight	70 t
Net registered tonnage	50 t
Gross tonnage	168 t

## Machinery

Main engines	3 x Caterpillar C32C Diesel
Main generators (diesel driven)	2 x 60 kw / 230 v / 400 v / 50 hz
Bow thruster	1 x 75 kw
Propulsion	3 x fixed pitch propellers
Rudders	Balanced
Steering gear	2 x non independent

## Mooring equipment

Anchor windlass	Single anchor windlass only
Bow anchors	1 x 80 kg
Chains	200 m chain

## Deck Crane

Manufacturer	1 x Effer
SWL and radius	1 t @ 5 m
Location	Port midships

## Ancilliary equipment

Oily water separator	Alfa Lavel
----------------------	------------

## Performance

Maximum speed / consumption	29 knots / 20 t per day
Economical speed / consumption	26 knots / 17 t per day

## Capacities

Fuel oil	26 m <sup>3</sup>
Potable water	27.1 m <sup>3</sup>
Ballast / drill water	25 m <sup>3</sup>
Deck cargo capacity	40 t
Deck strength	2.5 t per m <sup>3</sup>
Clear deck area m <sup>2</sup>	105 m <sup>2</sup>
Clear deck area max L x B	15 m x 6 m

# Vessel Specifications

## Communication and navigation equipment

GMDSS station	Area 3
Satcom and type	C, Thrane & Thrane Sailor TT3606
SSB	1 x Furuno FS-1570, 150W
AIS	Furuno FA-150
EPIRB	Mc Murdo E5
Radar transponder	Mc Murdo S4
Two-way portable VHF / UHF	3 x ICOM IC-M72
Radar 1	JRC JMA-5100
Radar 2	JRC JMA-5100
Gyro compass	Anschultz type 22
Auto pilot	Anschultz Pilotstar
GPS receiver	2 x JRS J-NAV 500
Echo sounder	Raymarine ST40
Doppler speed log	Yes
Anemometer	Yes

---

## Fire fighting and anti-pollution equipment

Emergency fire pump	35 m3 x 60 m
Locker with fireman's outfit	1
Portable FIFI appliances	16 x fire extinguishers
CO <sup>2</sup> system for engine room	Yes

---

## Safety equipment

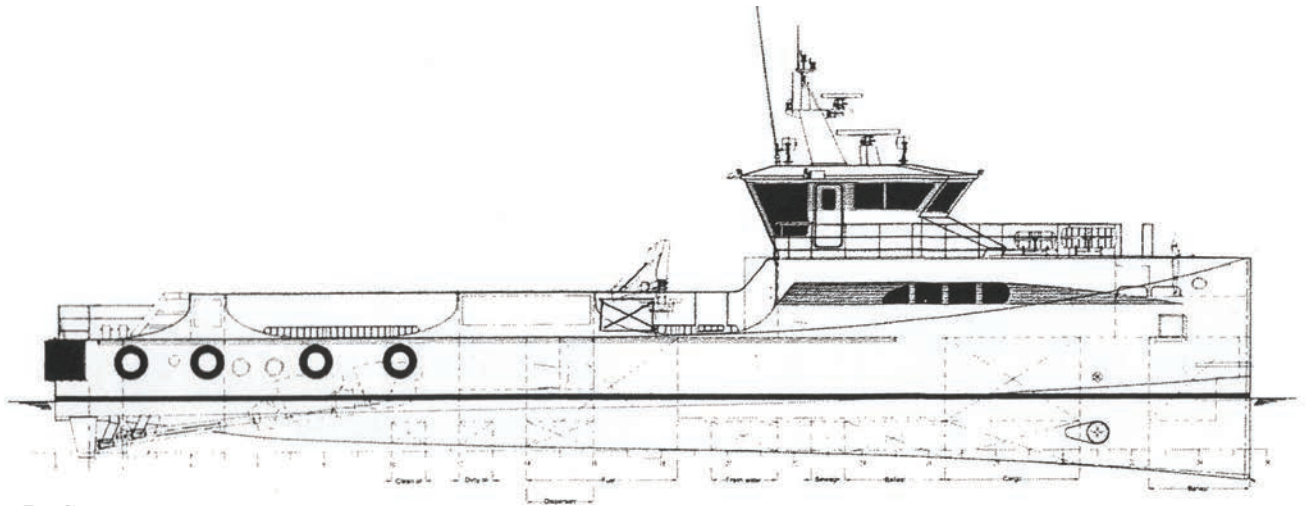
Life rafts	5 x 25 men
Life buoys	4 x Perry buoys
Life jackets	55
Immersion suits	7

---

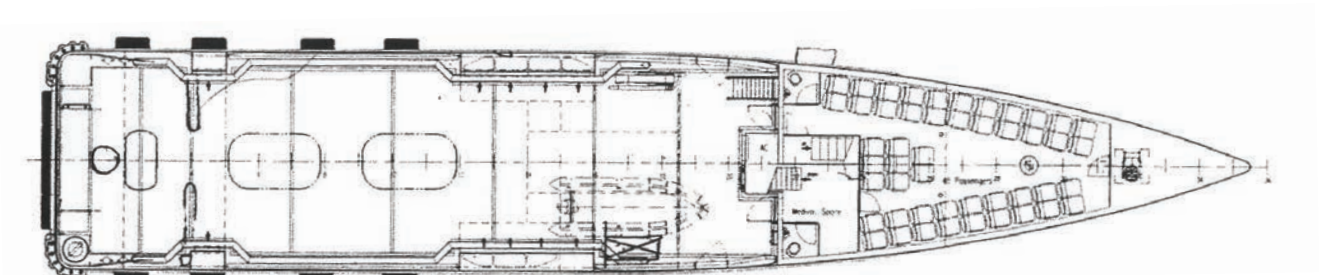
## Accommodation

Max per LSA	55 (5 crew and 50 passengers)
1 berth cabins	1
2 berth cabins	2

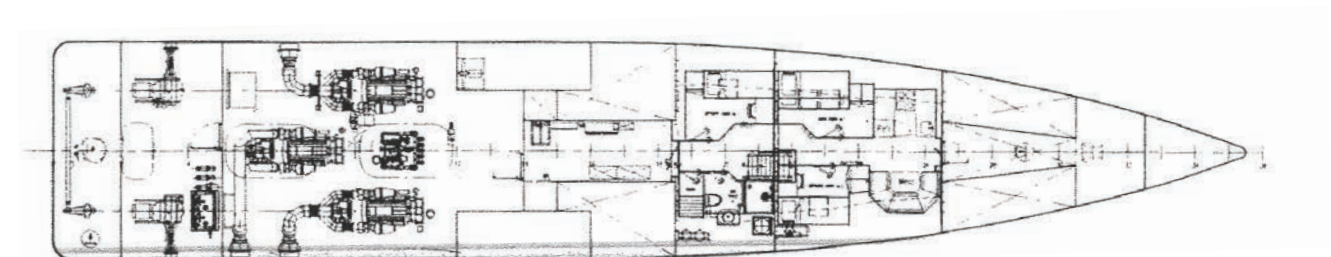
# GA Specifications



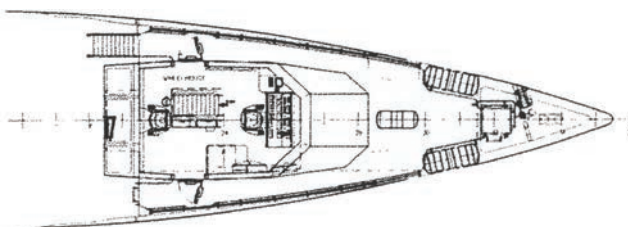
Profile



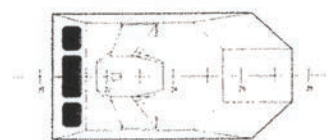
Main deck



Below main deck



Bridgedeck



Top of wheelhouse

## CONTACT

Commercial Department  
Topaz Energy and Marine  
Level 58, Almas Tower, Jumeirah Lakes Towers  
P.O. Box 282800, Dubai, UAE  
Tel +971 4 440 47 00  
Fax +971 4 440 47 99  
Email [marketing.topaz@topaz-marine.com](mailto:marketing.topaz@topaz-marine.com)

Topaz Marine Divisional Office  
Nico Middle East Ltd.  
P.O. Box 261005, Building 33  
Oilfields Supply Centre  
Jebel Ali Free Zone, Dubai, UAE  
Tel +971 4 883 29 29  
Fax +971 4 883 29 59  
Email [marketing.mena@topaz-marine.com](mailto:marketing.mena@topaz-marine.com)

Topaz Marine Azerbaijan  
BUE Caspian Ltd.  
3<sup>rd</sup> Floor, Gurban Khalilov Street 3  
Yasamat District, Baku  
AZ1006 Azerbaijan  
Tel +994 124 97 87 87  
Fax +994 124 97 25 96  
Email [topazmarine.azn@topaz-marine.com](mailto:topazmarine.azn@topaz-marine.com)

Topaz Marine Kazakhstan  
BUE Kazakhstan Limited  
1<sup>st</sup> Floor, 36A, Vystavochniy Business Center  
14 Micro Region, Aktau  
130000 Kazakhstan  
Tel +772 92 42 82 72  
Fax +772 92 42 82 77  
Email [tmkzh.aktauoffice@topaz-marine.com](mailto:tmkzh.aktauoffice@topaz-marine.com)

Topaz Marine MENA  
Doha Marine Services WWL  
P.O. Box 37102, 4<sup>th</sup> Floor, Faisaliyah Building  
Suhaim Bin Hamad Street, Al Sadd Area  
Doha, State of Qatar  
Tel +974 4410 48 00  
Fax +974 4447 94 73  
Email [marketing.mena@topaz-marine.com](mailto:marketing.mena@topaz-marine.com)