

Australia

Level 4, 70 City Road
Southbank VIC 3006
Australia

GPO Box 88
Melbourne VIC 3001
Australia

T: +61 3 9254 1600

F: +61 3 9254 1658

E: manager@pomaritime.com

www.pomaritime.com

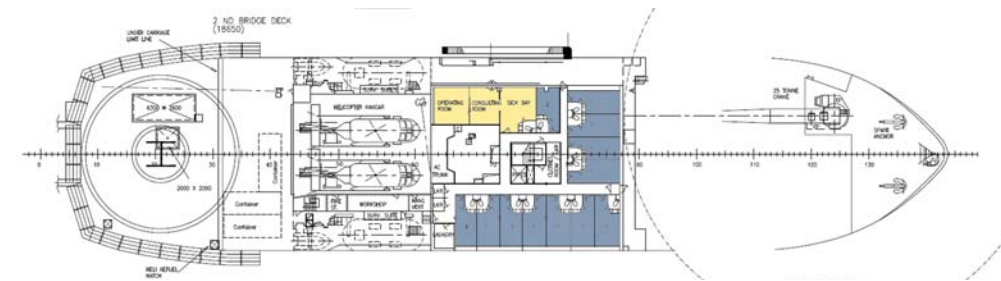
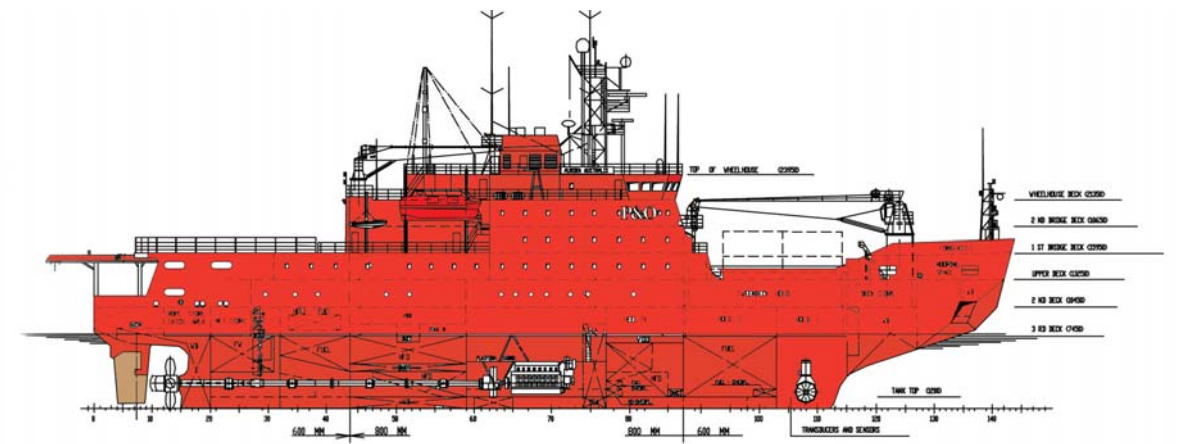


Global Maritime Excellence

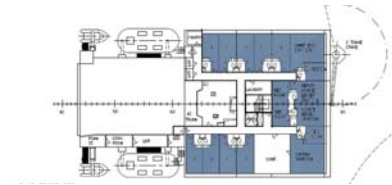
Aurora Australis



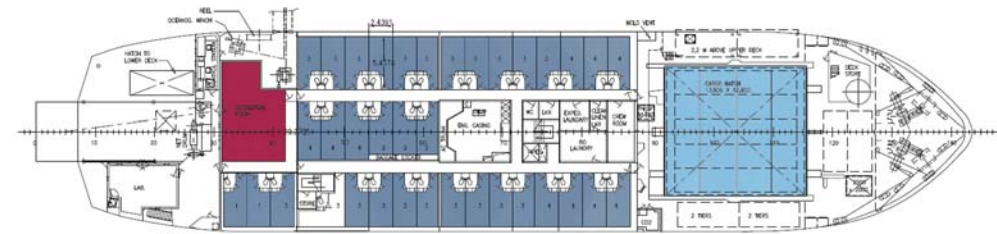
Global Maritime Excellence



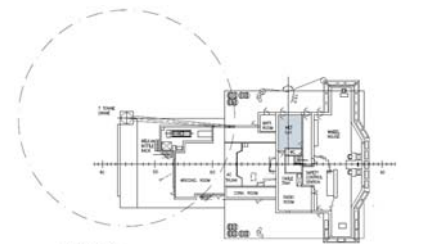
1st Bridge Deck



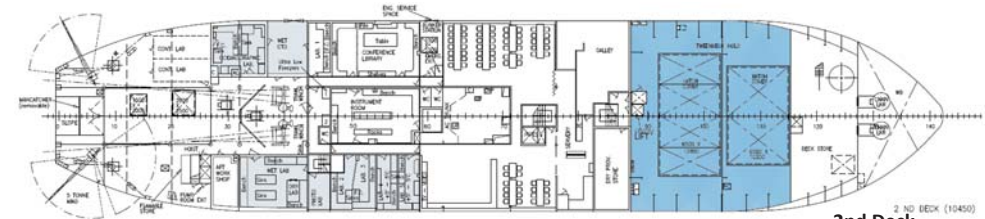
2nd Bridge Deck



Upper Deck



Wheelhouse Deck



2nd Deck

- Accommodation
- Medical
- Cargo
- Recreation
- Laboratory



Specifications

Type: Polar Research and Supply Vessel
Length Overall / BEAM / DRAFT: 94.91m / 20.3m / 7.9m
Gross Registered Tonnage: 6,574 tonnes
Deadweight Tonnage: 3,893 tonnes

Classification
 Lloyds Register Ice Class 1A Super Icebreaker \times 100A1 \times LMC
 UMS DP(CM)

Propulsion
 2 x medium speed diesels coupled through a reduction gearbox and hydraulic clutches driving a single Controllable Pitch Propeller. DP capable through a LIPS control system.

Thrusters
 Single transverse bow and 2 retractable azimuth stern thrusters
 Main: 1 x Wartsila 12V32D 4500kW / 6000HP
 1 x Wartsila 16V32D 5500kW / 7400HP
 Auxillaries: 2 x Wartsila 6R22 900kW
 1 x Wartsila 4R22 600kW

Electrical Power
 415/240V 50Hz. 32Amp and 100Amp 3 phase outlets on deck.
 UPS-40Amps / 30 min

Endurance
 25,000 nautical miles / 90 days

Deck Space
 Trawl Deck: 100m²
 Helideck: 400m²
 Main Hatch: 210m²

Gantry Crane Stern
 4 tonne SWL Gantry

Main Deck
 Three cranes of 25/31 (fitted with a 5 tonne hook for efficient cargo operations in open seas), 7/13 and 2 tonne SWL for cargo handling.

Speed/ Consumption
 Max: 16 knots / 37 tonne per day
 Economical: 11 knots / 18 tonne per day
 Port: 2 tonne per day

Cargo
 Hold 1,790m³
 Deck capacity for 18 TEUs 700 tonne cargo with maximum bunkers 1.10 Mega litres of cargo fuel with transfer rate of 40kL per hour
 Two forklifts of 5 and 2 tonne SWL.

Oceanographic
 Two winches each holding 6,000m of 6.4m single conductor cable suitable for CTDs.

Laboratory Space
 8 laboratories. Dark room 7m². Meteorological room 15m². Conference room 46m². Scientific freezer -21C 60m³. Container laboratories can be carried and integrated into vessel's systems.

Helideck
 Capable of operating, refuelling and housing 2 x Sikorsky S76 or Bell Long Range helicopters. Aviation refuelling system of 120m³ capacity. NDB and DME fitted.

Ancillary Craft
 1 x 10m steel twin screw tender craft fitted with 2 x 125HP diesel. Speed 10 knots.

Environment
 Oily water separator and incinerator for garbage and sludge. Biological reduction sewerage system. Internal fuel system.

Communications
 Full GMDSS Area 4 installation with Fleet 77, Inmarsat C, data access, DSC HF telex marine VHF, aircraft UHF. Passenger cabins networked to cat 5 standard.

Accommodation
 Total 140 persons including 24 x crew and 116 x passengers in one, two, three and four berth cabins.
 All cabins with private facilities.
 Two bed hospital with full operating theatre.

Communal Facilities
 Cafeteria style restaurant including a quiet recreation space; video/music systems; gymnasium and sauna; lecture/video theatre and two conference rooms.

Biological Sampling
 2 x Gilson winches
 2 x trawl winches (4,000m x 22mm)
 Net drum
 2 x Hiab cranes (SWL 5 tonne)
 Stern ramp
 Towed sonar winch

Acoustic Equipment
 2 x Simrad EK500s working at 12, 38, 120 and 200kHz
 Hull mounted transducers
 Towed body transducers at 120 and 200kHz
 Sonar echo sounder 12kHz for bathymetry data logging
 Hull mounted acoustic release transducer (8-20kHz beam)
 Simrad FS3300 net surveillance sonar
 RDI narrow band (150kHz) ADCP